

VIENNA SELECT COLD

ITEM: _____ QUANTITY: _____

MODEL # VSCD

Shown with enclosed refrigerated base section.

SPECIFICATIONS

The VSCD is a slide-in cold display in our Vienna Select Series. Designed to slide into a counter with front stainless steel panel exposed. This merchandiser includes glass top that tilts up using gas-springs for support and tilt-out front glass for easy cleaning. It also features stainless steel exterior, top canopy light, (1) refrigerated glass shelf and sliding rear doors. Available in 3 different glass profiles: Square, Curved or Slanted.



Available depths: 30 11/16" *

Available heights: 52 1/2"

Available lengths: 34 5/8" 50 9/16" 66 1/2"

STANDARD FEATURES

- 304 Stainless Steel Exterior
- Tempered Tilt-Up Top Glass
- Tempered Tilt-Out Front Glass
- Side Glass Panels
- Plexiglass Sliding Rear Doors
- Top Canopy Light
- (1) Refrigerated Shelf with Light
- Rear Cutting Board
- Adjustable Legs
- Easy Removable Deck Pans for Cleaning
- Adjustable Fan Speed

- Lift Up Evaporator
- Easy Slide-out Condensing Unit
- Floor Drain Required
- Rear Air Ventilation Kit
- Environmentally Safe Refrigerant

OPTIONAL FEATURES

- Integrations Modular Counter (Consult Factory)
- Remote Refrigeration
- 5 Year Compressor Warranty

MUST SPECIFY GLASS STYLE WHEN ORDERING.

ADD TO END OF MODEL NUMBER: SQ-SQUARE, SL-SLANTED, CV-CURVED.

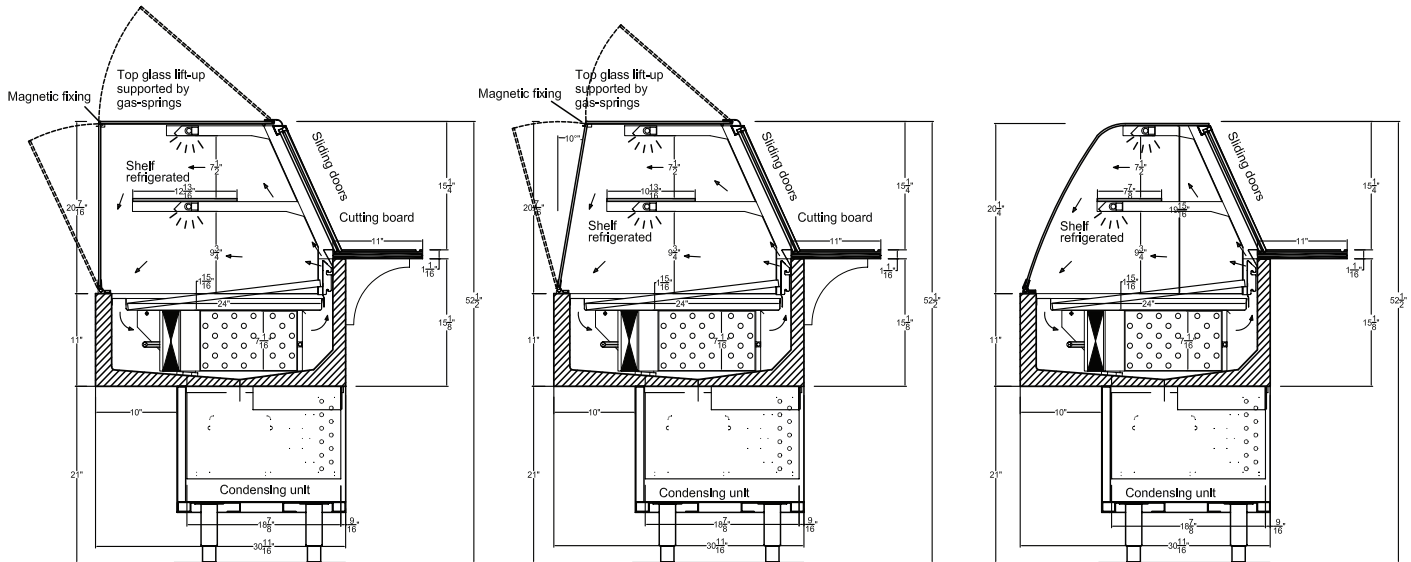
MODEL	L	D*	H	COMP HP	VOLT	AMP	NEMA PLUG	WT	REFRIG
VSCD2-20-R	34 5/8	30 11/16	52 1/2	3/8	115	7.25	5-15P	245	134A
VSCD3-20-R	50 9/16	30 11/16	52 1/2	1/2	115	8.62	5-15P	305	134A
VSCD4-20-R	66 1/2	30 11/16	52 1/2	1/2+	115/208-230	5.47	L14-20P	365	134A

* Depth does not include rear cutting board. Cutting board can be removed, if necessary to fit through entrance, and be reinstalled once in place.

VIENNA SELECT COLD

TOLL FREE: 800-525-3692

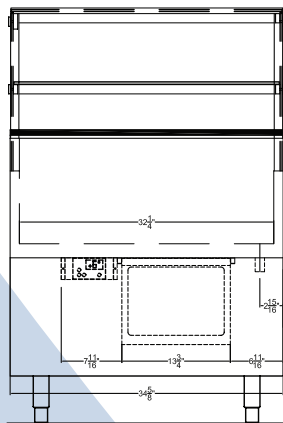
MODEL # VSCD



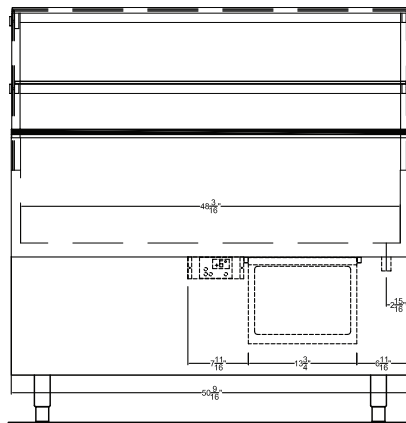
VSCD2-20R-SQ

VSCD2-20R-SL

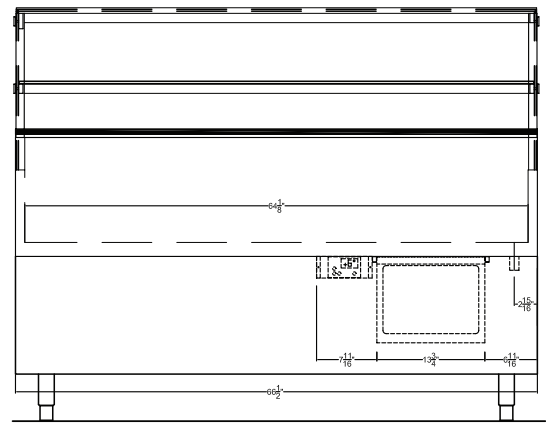
VSCD2-20R-CV



VSCD2



VSCD3



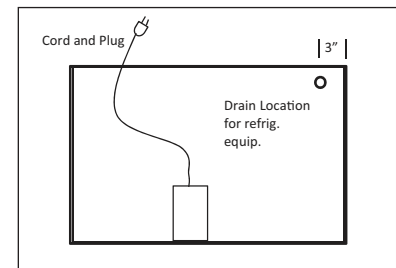
VSCD4

- Curved model does not include lift-up top glass or tilt-out front glass, as shown in drawing above.
- Condensing unit easily slides out. **DO NOT BLOCK** this area.
- Condensing unit requires adequate ventilation.

Electrical & Plumbing locations



Conforms to UL Standard 471, and NSF Standard 7; Certified To CSA Standard C22.2 No.120



1. A 1" diameter drain is provided. The drain **MUST** be run to a floor drain **AT TIME OF INSTALLATION**.
2. RPI Merchandiser is designed for use in stores where ambient temperatures and humidity do not exceed 75 Degrees Fahrenheit and 55% R.H. Locate away from direct sunlight, rapid air currents and extreme temperature changes. Exposure to air currents from ceiling fans, air conditioning diffusers, ovens, etc. will disrupt the case air curtain and refrigerated zone. Refrigerated Displays are designed to maintain pre-chilled products. Adding or loading warm products above 41 Degrees Fahrenheit can affect the temperature in the entire cabinet. RPI in line with its policy to continually improve its products reserves the right to change materials and specifications without notice.

CALL TOLL FREE: 800-525-3692 (609-714-2330)

FAX: 609-714-2331 www.rpiindustries.com

220 ROUTE 70, MEDFORD, NJ 08055

RPI REGAL PINNACLE INTEGRATIONS INDUSTRIES, INC.