

STYLE IA-9-ST

PROJECT: _____

ITEM: _____ QUANTITY: _____

INTEGRATIONS

Shown with Optional Upper Structure (US-5),
Corian Top and Mahogany Finished Exterior

SPECIFICATIONS

The IA-9-ST is a modular serving counter display unit. Featuring a 14-gauge stainless steel top, stainless steel interior base, plastic laminate exterior on three sides with an acrylic top ledge and lighted front merchandising shelves. Black plastic laminate base conceals the heavy-duty adjustable legs.

Available depths: 38"

Available lengths: 24" 36" 48" 60" 72" 84" 96"



STANDARD FEATURES

- 14-Gauge Stainless Steel Top
- Stainless Steel 18-Gauge Base Cabinet Open Rear
- 6" Adjustable Legs with Removable Black Kick Plate
- Standard Color Selection for Acrylic Top Ledge and Front Shelves
- 8'-0" 120 Volt Cord and Plug with outlet
- All Integration Series counter bases are fabricated in 18-gauge, type 304 stainless steel. Each counter top is fabricated in 14-gauge, type 304 stainless steel with a 2" drop edge and welded corners. Heavy duty 14-gauge cross bracing is provided as standard for additional stability and deflection resistance. Each unit is internally wired to accommodate either 120volt or 208volt operation to a factory-mounted junction box. All Integration Series counters are NSF listed for sanitation. All millwork exteriors are fabricated in accordance with AWI standards.

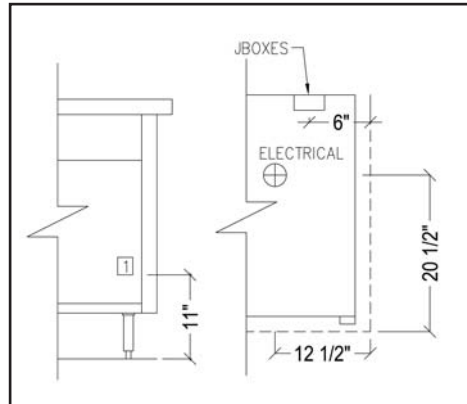
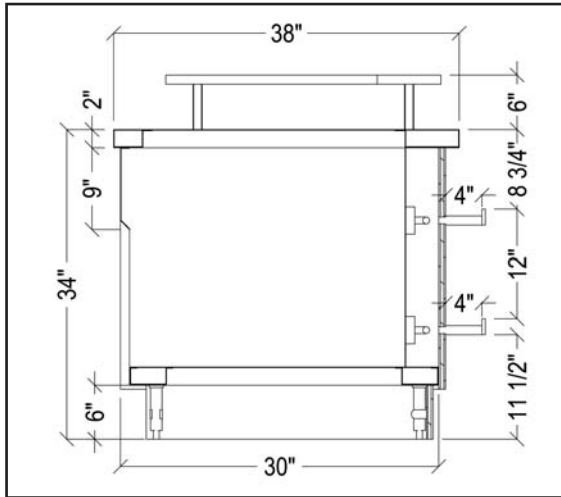
OPTIONAL FEATURES

- Stainless Steel Toe Base in Lieu of Laminate Base
- Convenience Outlet Panel Mounted with a Cord and Plug
Specify Voltage, Wattage and Location
- Vertical Stainless Steel Corner Trim
- Casters
- Louvers to Match Base
- Exterior Laminate: Non-Standard
- Corian Top: Stock Colors
- Corian Top: Non-Stock Colors
- Zodiac Top: Stock Colors
- Zodiac Top: Non-Stock Colors
- Standard Grade Laminate Top
- Top Extension up to 8"
- Acrylic Top Ledge: Non-Stock Colors
- Acrylic Front Shelves: Non-Stock Color
- Rear Doors
 - Stainless Steel
 - Laminate
- Door Locks
- Veneer Fascia
 - Oak
 - Maple
 - Mahogany
 - Standard Stain
 - Non-Standard Stain
- Island Style: Unit Will Change in Depth To 43"
- US-5 Upper Structure
Note: Upper Structure Not Available for 24" Unit
- Stainless Steel Drawer 18" x 18" x 4"

STYLE IA-9-ST

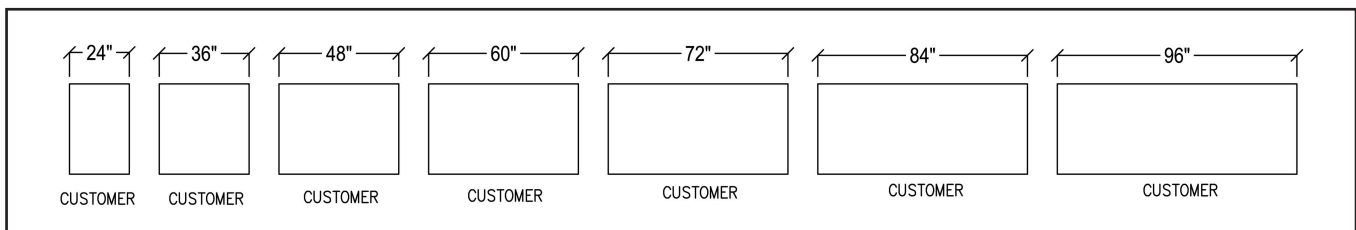
TOLL FREE: 800-525-3692

INTEGRATIONS



Electrical & Plumbing locations

1. Junction box for main power supply.
2. Junction box for drop in equipment
3. Junction box for sneeze upper unit.



MODEL	L	W	H	ELECTRICAL	NEMA PLUG	AMPS	WT
IA-9-ST-24	24"	38"	34"	120V/60/1 Phase	5-15P	12	252
IA-9-ST-36	36"	38"	34"	120V/60/1 Phase	5-15P	12	262
IA-9-ST-48	48"	38"	34"	120V/60/1 Phase	5-15P	12	339
IA-9-ST-60	60"	38"	34"	120V/60/1 Phase	5-15P	12	416
IA-9-ST-72	72"	38"	34"	120V/60/1 Phase	5-15P	12	493
IA-9-ST-84	84"	38"	34"	120V/60/1 Phase	5-15P	12	570
IA-9-ST-96	96"	38"	34"	120V/60/1 Phase	5-15P	12	647

RPI Industries, in line with its policy to improve its products, reserves the right to change materials or specifications without notice. Any adverse conditions will affect warranty.

CALL TOLL FREE: 800-525-3692 (609-714-2330)

FAX: 609-714-2331 www.regalpinnacl.com

220 ROUTE 70, MEDFORD, NJ 08055

