

MODEL # D6X-ULEP - HFS

SPECIFICATIONS

The Excel Series D6X-ULEP Ultra Low Front Dairy case helps you create a total "Wall of Product" in your dairy/deli departments. Front height has been lowered until it is virtually even with the bottom display racks. Shoppers have a full view of all product facings, top to bottom. Now you can maximize the merchandising opportunity without increasing footprint.



Available lengths: 51 3/8" 75 3/8" 99 3/8" 147 1/2"

Available depths: 42"

Available heights: 87 3/4"



UNIT SHOWN WITH OPTIONAL SHELVES
AND SOLID END PANELS

STANDARD FEATURES

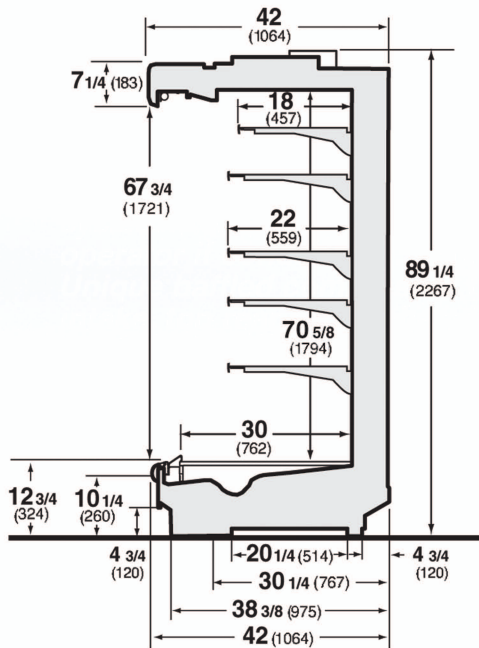
- DOE 2017 Compliant
- Remote Refrigeration
- All Metal Construction
- Hussmann Standard Paint & Bumper Colors
(Consult Factory for Available Colors)
- (1) Row Top Canopy Lighting
- Extra Tall & Ultra Low Footprint Design for
Maximum Capacity and Merchandising Display
- 30" Base Deck Display
- Front Cart Bumper
- E-Plus (EP) Extra-High Efficiency Coil
(Reduces Energy Costs by 18%)
- Hardwire Direct
- ETL Listed in Accordance with UL 471
and NSF 7 Standards
- 5 Year Modular Coil Warranty
- Floor Drain Required

OPTIONAL FEATURES

- Stainless Steel Exterior Finish
- Hussmann Optional Colors
(Consult Factory for Available Colors)
- Up to (6) Rows of Optional Shelves
(Consult Factory for More Information)
- Up to (3) Additional Rows of Top Canopy Lighting
(Consult Factory)
- Lighting Under Shelves
(Consult Factory for All Available Options)
- Solid End Panels
 - Right Left Both Ends
- View End Panels
 - Right Left Both Ends
- Contour End Panels
 - Right Left Both Ends
- Solid End Panels with Mirrored Interior
(Consult Factory for More Information)
- Pull Down Night Curtain

MODEL # D6X-ULEP - HFS

REMOTE - REFRIGERATED



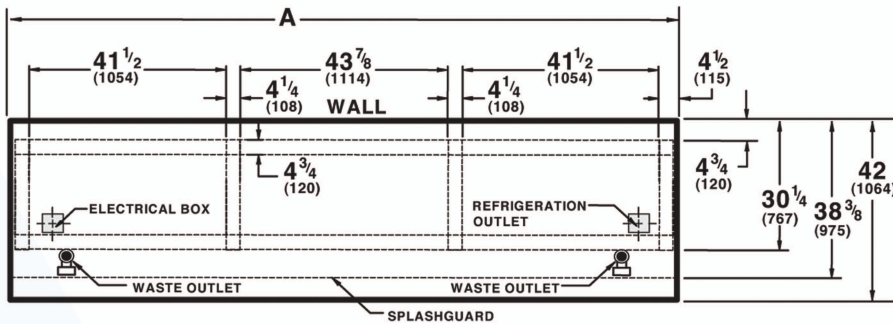
MODEL	L*	D	H	BTU/HR**	VOLTS	AMPS	EVAP. TEMP °F	PLUG	WT	REFRIG.
D6X-4ULEP-HFS	51 3/8	42	87 3/4	7052	120	20	26	Hardwire	800	Verify
D6X-6ULEP-HFS	75 3/8	42	87 3/4	10578	120	20	26	Hardwire	1000	Verify
D6X-8ULEP-HFS	99 3/8	42	87 3/4	14104	120	20	26	Hardwire	1200	Verify
D6X-12ULEP-HFS	147 1/2	42	87 3/4	21156	120	20	26	Hardwire	1600	Verify

* LENGTHS INCLUDE END PANELS

** ADD 10 BTU / HR PER SHELF ROW FOR LED LIGHT FIXTURES

** ADD 20 BTU / HR PER SHELF ROW FOR LED LIGHT FIXTURES

Note: Please use Hussmann's technical data sheets to get precise dimensions for all store layout purposes.



FRONT

Electrical & Plumbing locations

Dimension	8 FT	12 FT
A	96 3/8 (2448)	144 1/2 (3670)

Notes:

All field wiring connection points are above the case.
Case-to-case connections are made in the electrical box at the top of the case.

Overall case length without ends or partitions.



Conforms to UL Standard 471, and NSF Standard 7; Certified To CSA Standard C22.2 No. 120



Hussmann refrigerated merchandisers configured for sale for use in the United States meet or surpass the requirements of the DOE 2017 energy efficiency standards

1. For optimum performance, these models are designed for use in air-conditioned stores where temperature and humidity are maintained at 75°F and 55% R.H. Locate case away from direct sunlight, rapid air currents and extreme temperature changes. Case is designed for holding pre-chilled product only.

RPI in line with its current policy reserves the right to change or revise specifications and product design in connection with any feature of our products. Such changes do not entitle the buyer to corresponding changes improvements, additions, or replacements for equipment previously sold or shipped.

CALL TOLL FREE: 800-525-3692 (609-714-2330)

FAX: 609-714-2331 www.rpiindustries.com

220 ROUTE 70, MEDFORD, NJ 08055