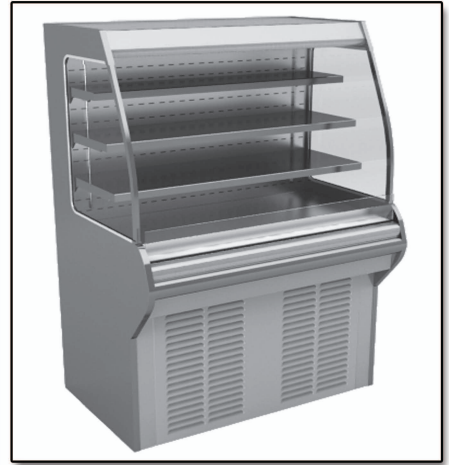


## MODEL # IM-S - HFS

### SPECIFICATIONS

Isla Series features an “all-in-one-area” way to display refrigerated, dry and hot products, by offering a unique “design-your-own island” merchandiser configuration. A variety of modules and flexible layouts that include 3-sided, 2-sided, in-line and stand-alone cases are available to accommodate the ideal footprint.

**Available in End, Center, and Inline configurations.**



Available lengths: Types . . .

IM-04-T: ☐ 36" ☐ 48" ☐ 60"

IM-04-I: ☐ 36" ☐ 48" ☐ 60" ☐ 72" ☐ 96"

IM-05-I: ☐ 36" ☐ 48" ☐ 60" ☐ 72" ☐ 96"

Available depths: ☐ 35 3/8" ☐ 67 3/8" (IM-04-T ONLY)

Available heights: ☐ 64" ☐ 71 3/4"



### STANDARD FEATURES

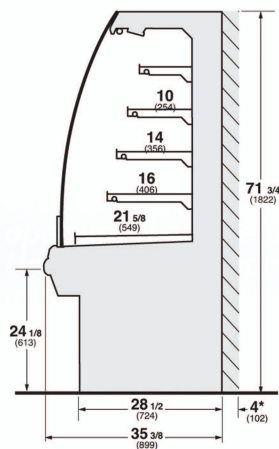
- DOE 2017 Compliant
- Self-Contained Refrigeration
- Condensing Unit
- Electronic Thermostat Controls
- Module Coil System – 5 Year Warranty
- Evap Pan
- Adjustable Temp Control for Beverage, Deli and Meat Products
- Black Interior
- Painted Exterior
- Quick Snap-In T5 Lighting
- Electronic Ballast
- Solar Digital Thermometer
- ETL Listed / ETL Sanitation Listed
- Please Reference Color Chart for Choice of Standard Hussmann Paint and Finish Options

### OPTIONAL FEATURES

- ☐ Adjustable Shelves with Tag Molding
- ☐ Plex Product Stop
- ☐ Peg Bar Shelving
- ☐ Energy Efficient LED Shelf Lighting
- ☐ White Interior
- ☐ Night Shade
- ☐ Stainless Steel Interior
- ☐ End Panels
  - ☐ Flush ☐ Solid ☐ View ☐ Autobrite - Interior
- ☐ End Panel with Wrap-Around Bumper
  - ☐ Solid ☐ View ☐ Autobrite - Interior
- ☐ Finished Exterior Back Cover (Inline)
  - ☐ Painted ☐ Stainless Steel
- ☐ Special Interior and Exterior Finishes\*  
(Consult Your Hussmann Sales Representative)

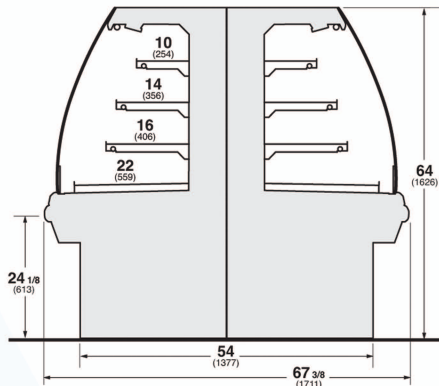
## MODEL # IM-S - HFS

IM-05-1x-S End or Combo Center Case

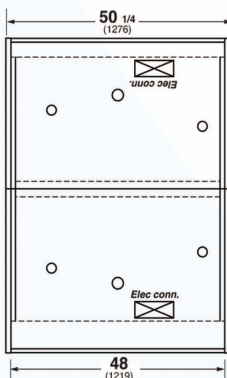


\*MIN required air space for condenser air discharge.

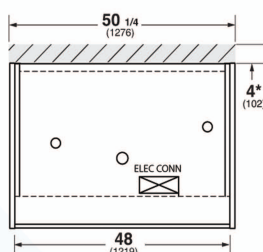
IM-04-Tx-S Back-to-Back Multi-Deck Self-Service Self-Contained



IM-04-T4-S Refrigerated Multi-Deck Self-Service Self-Contained



IM-05-14-S Refrigerated Multi-Deck Self-Service Self-Contained



\*MIN required air space for condenser air discharge.

## Electrical & Plumbing locations

1. For optimum performance, these models are designed for use in air-conditioned stores where temperature and humidity are maintained at 75°F and 55% R.H. Locate case away from direct sunlight, rapid air currents and extreme temperature changes. Case is designed for holding pre-chilled product only.

RPI in line with its current policy reserves the right to change or revise specifications and product design in connection with any feature of our products. Such changes do not entitle the buyer to corresponding changes improvements, additions, or replacements for equipment previously sold or shipped.

## SELF - CONTAINED (IM-04)

MODEL	L	D	H	HP	VOLT	AMP	PLUG	WT	REFRIG.
IM-04-I3-S-HFS	36	35 3/8	64	1/2	115	10.5	5-30P	1000	404A
IM-04-I4-S-HFS	48	35 3/8	64	3/4	208	6.8	14-30P	1100	404A
IM-04-I5-S-HFS	60	35 3/8	64	1.0	208	9.0	14-30P	1200	404A
IM-04-I6-S-HFS	72	35 3/8	64	1.0	208	11.0	14-30P	1400	404A
IM-04-I8-S-HFS	96	35 3/8	64	1 1/2	208	12.4	14-30P	1600	404A

## SELF - CONTAINED (IM-05)

MODEL	L	D	H	HP	VOLT	AMP	PLUG	WT	REFRIG.
IM-05-I3-S-HFS	36	35 3/8	71 3/4	3/4	208	6.8	14-30P	1000	404A
IM-05-I4-S-HFS	48	35 3/8	71 3/4	1.0	208	9.0	14-30P	1100	404A
IM-05-I5-S-HFS	60	35 3/8	71 3/4	1 1/4	208	9.6	14-30P	1200	404A
IM-05-I6-S-HFS	72	35 3/8	71 3/4	1 1/2	208	12.4	14-30P	1400	404A
IM-05-I8-S-HFS	96	35 3/8	71 3/4	2.0	208	18.0	14-30P	1600	404A

## SELF - CONTAINED (TWIN IM-04)

MODEL	L	D	H	HP	VOLT	AMP	PLUG	WT	REFRIG.
IM-04-T3-S-HFS	36	67 3/8	64	1.0	208	11.0	14-30P	2000	404A
IM-04-T4-S-HFS	48	67 3/8	64	1 1/2	208	12.4	14-30P	2100	404A
IM-04-T5-S-HFS	60	67 3/8	64	1 3/4	208	10.9	14-30P	2200	404A

## IM-04-Tx-S Back-to-Back in 04 Only

Visit [www.hussmann.com](http://www.hussmann.com)  
for more cross section options!



Conforms to UL Standard 471,  
and NSF Standard 7; Certified  
To CSA Standard C22.2 No.120



Hussmann Heated merchandisers configured for sale for use in the United States  
meet or surpass the requirements of the DOE 2017 energy efficiency standards

CALL TOLL FREE: 800-525-3692 (609-714-2330)

FAX: 609-714-2331 [www.rpiindustries.com](http://www.rpiindustries.com)

220 ROUTE 70, MEDFORD, NJ 08055

**RPI INDUSTRIES, INC.** v1.13