

## MODEL # RBB - HFS

### SPECIFICATIONS

The Specialty Series RBB, Refrigerated Back Bar display, is a Service Merchandiser that specializes in the display and storage of Deli, Cheese, and Wine products. Flexible design allows for stand alone installation into a lower refrigerated or dry counter, and features special finish options to match the department decor.



Available lengths:  51 3/8"  63 3/8"  75 3/8"  99 3/8"  147 1/2"

Available depths:  36"

Available heights:  78"



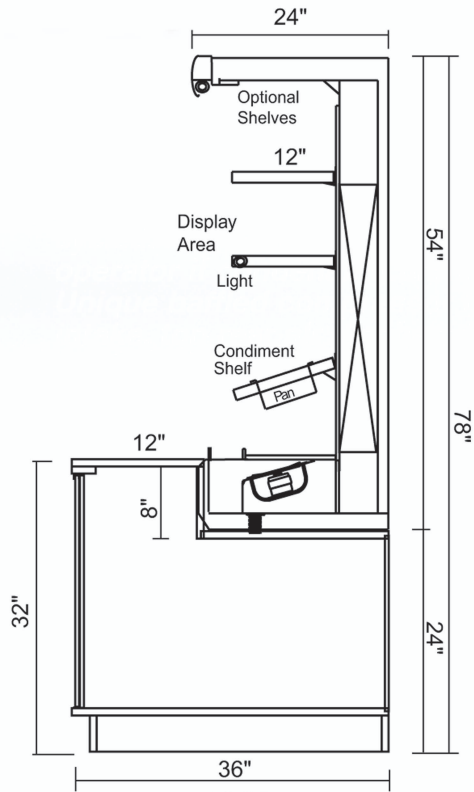
### STANDARD FEATURES

- DOE 2017 Compliant
- Remote Refrigeration
- Dry Storage Counter - White Laminate
- Large Forced Air rear Wall Coil
- Solar Digital Thermometer
- Black Powder Coated Interior
- Painted Fascia
- Single Row Top Lamp
- Suction Line Solenoid
- Thermostat
- Please Reference Color Chart for Choice of Standard Hussmann Paint and Finish Options
- ETL Listed / ETL Sanitation Listed
- Environmentally Safe Refrigerant

### OPTIONAL FEATURES

- LED Canopy and Shelf Lighting
- Case Only - No Counter
- End Panels (Solid or View End)
- Refrigerated Lower Storage with Insulated Sliding Doors
- Powder Coated Adjustable Shelf with Tag Molding and Product Stop (150 lb Max)
- Powder Coated Level Heavy Duty Shelves with Tag Molding (250 lb Max)
- Adjustable Shelf with Sausage Rod and Rear Product Stop
- Quick Snap-In T5 Lighting (Shelves)
- White or Stainless Steel Interior
- Energy Efficient Fan Motors
- Liquid Line Hand Valve
- Solid Surface Ledge Options
- Custom Exterior Case and Counter Finishes
- Exterior Finish Options
- Custom Trim, Decor, Lengths and Options  
(Consult Your Hussmann Sales Representative)

## MODEL # RBB - HFS



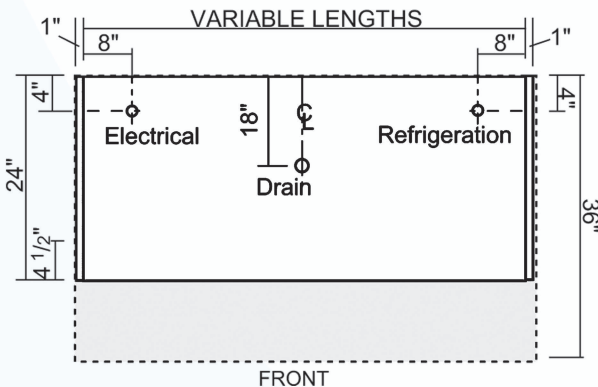
**RBB**  
Refrigerated Back Bar Deli

## REMOTE - REFRIGERATION

MODEL	L*	D	H	BTU / HR	VOLTS	AMPS	EVAP. TEMP °F	PLUG	WT	REFRIG.
RBB-4-HFS	51 3/8	36	78	6762	120	15	24	Hardwire	1000	Verify
RBB-5-HFS	63 3/8	36	78	7303	120	15	24	Hardwire	1000	Verify
RBB-6-HFS	75 3/8	36	78	8763	120	15	24	Hardwire	1200	Verify
RBB-8-HFS	99 3/8	36	78	13524	120	15	24	Hardwire	1300	Verify
RBB-12-HFS	147 1/2	36	78	20286	120	15	24	Hardwire	1500	Verify

\* LENGTHS INCLUDE END PANELS

**Note: Please use Hussmann's technical data sheets to get precise dimensions for all store layout purposes.**



**Electrical & Plumbing locations**



Conforms to UL Standard 471,  
and NSF Standard 7; Certified  
To CSA Standard C22.2 No.120



**Hussmann refrigerated merchandisers configured for sale for use in the United States meet or surpass the requirements of the DOE 2017 energy efficiency standards**

- For optimum performance, these merchandisers are designed for use in stores where ambient temperatures and humidity do not exceed 75 Degrees Fahrenheit and 55% R.H. Locate away from direct sunlight, rapid air currents and extreme temperature changes. Exposure to air currents from ceiling fans, air conditioning diffusers, ovens, etc. will disrupt the case air curtain and refrigerated zone. Refrigerated Displays are designed to maintain pre-chilled products. Adding or loading warm products above 41 Degrees Fahrenheit can affect the temperature in the entire cabinet.

RPI in line with its current policy reserves the right to change or revise specifications and product design in connection with any feature of our products. Such changes do not entitle the buyer to corresponding changes improvements, additions, or replacements for equipment previously sold or shipped.

CALL TOLL FREE: 800-525-3692 (609-714-2330)

FAX: 609-714-2331 [www.rpiindustries.com](http://www.rpiindustries.com)

220 ROUTE 70, MEDFORD, NJ 08055