

VIENNA-PRO

FEATURES

- #4 Stainless Exterior
- Gray Trim Insulated Glass / Square Profile
- LED Lighting
- Rear Breathing
- Hinged Rear Doors
- Slide In Base For Counter Install
- Optional Flex Panel Front And Side



COLD GRAB & GO

MODEL

VIAS3-27-R-SQ-SC-INS PRO

Quantities *limited* and available on a *first come, first serve* basis
Contact RPI customer service for additional information

VIENNA PRO GRAB & GO SERIES

PROJECT: _____
ITEM: _____ **QUANTITY:** _____

MODEL # VIAS-SQ INS PRO

SPECIFICATIONS

The Vienna PRO Series VIAS-R-SQ-INS PRO is a self service "Grab and Go" style self contained rear breathing refrigerated merchandiser with a stainless steel exterior / interior and tube steel constructed base. Features include a square glass profile with insulated glass top and sides, 2 glass shelves and Energy efficient LED lighting under each shelf and top canopy. The unit is available in two lengths, designed as free-standing, and with a base to accommodate optional flex series panel system. Units can also be used as a slide-in style display, with optional trim-flange and legs

Available lengths: ☐ 31 1/8"
Available depths: ☐ 27 3/8"
Available heights: ☐ 27 3/8" (Display Area)

UNITS CAN BE DESIGNED FOR CONTINUAL
MODULAR SHOWCASE LINE-UPS!



UNIT SHOWN WITH OPTIONAL FLEX SERIES PANELING

STANDARD FEATURES

- Self-contained refrigeration
- Squared glass profile
- **Top Display Area:** Grey Trim Glass with #4 stainless steel interior & exterior
- PRO Series base finished in #4 stainless steel
- Insulated glass sides
- Lift-up top glass panel
- Open front for self serve application
- Hinged rear see-through access doors
- 2 Adjustable interior glass shelves
- Energy efficient LED lighting
- Programmable digital display controller
- 6' Cord & plug
- Adjustable Levelers
- ETL listed in accordance with UL 471 and NSF 7 standards
- Environmentally safe refrigerant
- Rear Breathing
- 5 year Compressor warranty
- Floor Drain Required

OPTIONAL FEATURES

- ☐ Remote Refrigeration
- ☐ Powder Coat Exterior (20 Available colors, see color chart)
- ☐ #8 Mirror Polished Stainless Steel Exterior Trim
- ☐ 3 Sided Trim Flange ***
- ☐ Removable Acrylic Locking Night Cover
- ☐ Flex Series Paneling Profiles:
 - ☐ HF (Half Full) ☐ HT (Half Tapered)
- ☐ Flex Series Flat Paneling Finish Options:
 - ☐ #4 Brushed Stainless Steel ☐ #8 Mirror Polished Stainless Steel
 - ☐ Laminate ☐ Wood Veneer
- ☐ 6" Casters *
- ☐ 6" Adjustable Legs *
- ☐ 8" Adjustable Legs *



MODEL	L	D	H	VOLT	AMP	PLUG	WT	REFRIG.	CUT-OUT SIZES**
VIAS2-27-R-SQ-SC-INS PRO	31 1/8	27 3/8	27 3/8	115	9.8	5-15P	504	404A	31 3/8 x 27 5/8

* **NOTE / IMPORTANT:** ADD 6" ADJUSTABLE LEGS / 6" CASTERS for 34" COUNTER HEIGHT / ADD 8" ADJUSTABLE LEGS for 36" COUNTER HEIGHT

** **CUT-OUT SIZES FOR SLIDE-IN APPLICATION**

*** **SLIDE-IN STYLE UNIT TO INCLUDE NON-WEIGHT BEARING TRIM FLANGE**



Conforms to UL Standard 471,
 and NSF Standard 7; Certified
 To CSA Standard C22.2 No.120

CALL TOLL FREE: 800-525-3692 (609-714-2330)

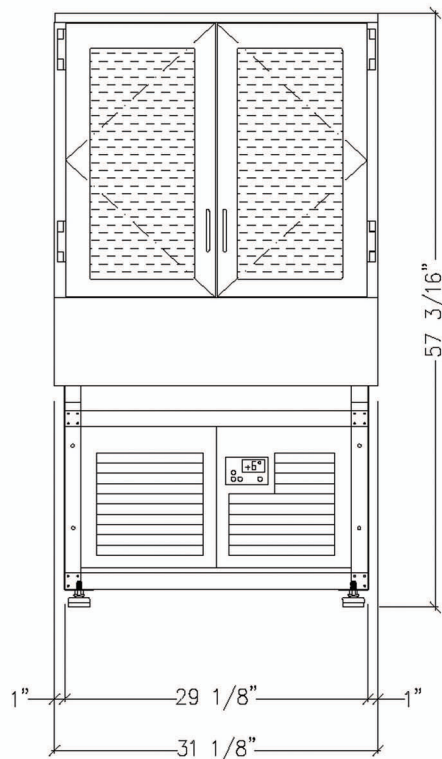
FAX: 609-714-2331 www.rpiindustries.com

220 ROUTE 70, MEDFORD, NJ 08055

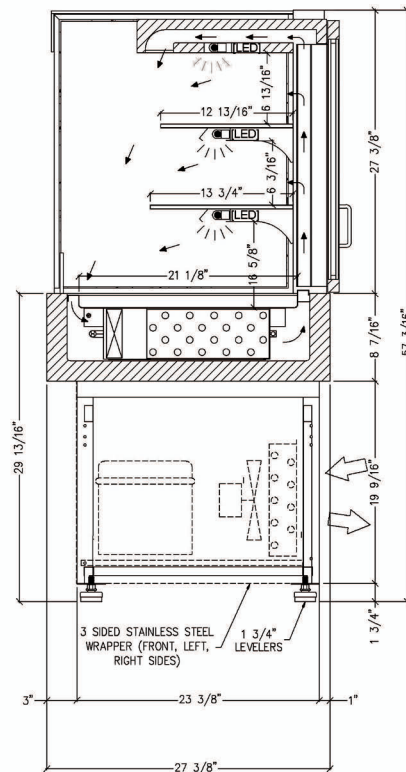


INDUSTRIES, INC. v4_3_17

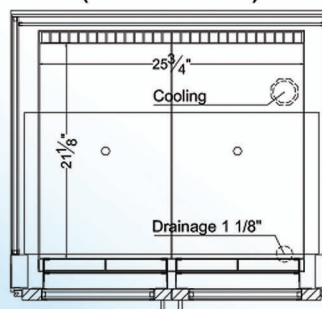
MODEL # VIAS-SQ INS PRO



VIAS2-27-R-SQ-SC-INS PRO



(FLOOR Plan)



Electrical & Plumbing locations

(2 1/2" HOLE REQUIRED FOR COOLING AND DRAINAGE LINES)

1. A 1" diameter drain is provided. The drain **MUST** be connected to a floor drain or storage container **AT TIME OF INSTALLATION**.
2. Rear ventilation louvers, **MUST** be provided in the cabinet or counter and located so to provide full ventilation for the condensing unit.
3. The PRO merchandisers are designed for use in locations where temperatures and humidity do not exceed 75 degrees and 55% R.H. Locate away from direct sunlight, rapid air currents and extreme temperature changes. Exposure to air currents from ceiling fans, air conditioners, ovens, etc. will disrupt the cases air current and refrigeration zone within. Any adverse field conditions stated above will void warranty.

RPI in line with it's policy to continually improve it's product reserves the right to change materials and specifications without notice.

CALL TOLL FREE: 800-525-3692 (609-714-2330)

FAX: 609-714-2331 www.rpiindustries.com

220 ROUTE 70, MEDFORD, NJ 08055