

VIENNA-PRO

FEATURES

- #4 Stainless Exterior
- Gray Trim Insulated Glass / Square Profile
- Hinged Rear Doors
- LED Lighting
- 2 Adjustable Glass Shelves



AMBIENT GRAB & GO

MODEL

VIDD2-27-R-SQ-CO-INS PRO

VIDD3-27-R-SQ-CO-INS PRO

Quantities *limited* and available on a *first come, first serve* basis
Contact RPI customer service for additional information

VIENNA **PRO** DRY DISPLAY SERIES

PROJECT: _____
ITEM: _____ **QUANTITY:** _____

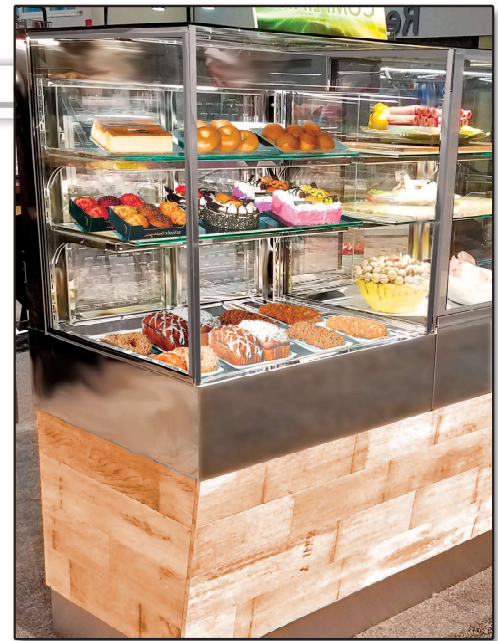
MODEL # VIDD-SQ-CO-INS PRO (GRAB & GO)

SPECIFICATIONS

The Vienna PRO Series Dry VIDD-R-SQ-INS PRO is available as a self-service grab & go style merchandiser with a stainless steel exterior / interior and insulated glass sides, 2 glass shelves and energy efficient LED lighting under each shelf and top canopy. The unit is available in two lengths, designed as free-standing, and with a base to accommodate optional flex series panel system. Units can also be used as a slide-in style display, with optional trim-flange and legs.

Available lengths: ☐ 31 1/8" ☐ 43 7/8"
Available depths: ☐ 27 3/8"
Available heights: ☐ 27 3/8" (Display Area)

UNITS CAN BE DESIGNED FOR CONTINUAL
MODULAR SHOWCASE LINE-UPS!



UNIT SHOWN WITH OPTIONAL FLEX SERIES PANELING

STANDARD FEATURES

- Squared glass profile
- **Top Display Area:** Grey Trim Glass with #4 stainless steel interior & exterior
- PRO Series base finished in #4 stainless steel
- Insulated glass sides & Lift-up tempered glass top panel
- Open front for self serve application
- Hinged rear see-through access doors
- 2 Adjustable interior glass shelves
- Energy efficient LED lighting
- 6' Cord & Plug
- Adjustable Levelers
- ETL listed in accordance with UL 471 and NSF 7 standards

OPTIONAL FEATURES

- ☐ Powder Coat Exterior (20 Available colors, see color chart)
- ☐ #8 Mirror Polished Stainless Steel Exterior Trim
- ☐ 3 Sided Trim Flange ***
- ☐ Removable Acrylic Locking Night Cover
- ☐ Flex Series Paneling Profiles:
 - ☐ HF (Half Full) ☐ HT (Half Tapered)
- ☐ Flex Series Flat Paneling Finish Options:
 - ☐ #4 Brushed Stainless Steel ☐ #8 Mirror Polished Stainless Steel
 - ☐ Laminate ☐ Wood Veneer
- ☐ 6" Casters *
- ☐ 6" Adjustable Legs *
- ☐ 8" Adjustable Legs *



Conforms to UL Standard 471,
and NSF Standard 7; Certified
To CSA Standard C22.2 No.120

(CO) OPEN GRAB & GO DISPLAY

MODEL	L	D	H	VOLTS	AMP	PLUG	WT	CUT-OUT SIZES**
VIDD2-27-R-SQ-CO-INS PRO	31 1/8	27 3/8	27 3/8	115	0.72	5-15P	314	31 3/8 x 27 5/8
VIDD3-27-R-SQ-CO-INS PRO	43 7/8	27 3/8	27 3/8	115	1.05	5-15P	358	44 1/8 x 27 5/8

* **NOTE / IMPORTANT:** ADD 6" ADJUSTABLE LEGS / 6" CASTERS for 34" COUNTER HEIGHT / ADD 8" ADJUSTABLE LEGS for 36" COUNTER HEIGHT

** **CUT-OUT SIZES FOR SLIDE-IN APPLICATION**

*** **SLIDE-IN STYLE UNIT TO INCLUDE NON-WEIGHT BEARING TRIM FLANGE**

PRO SERIES IS NOT AVAILABLE IN DROP-IN STYLE



CALL TOLL FREE: 800-525-3692 (609-714-2330)

FAX: 609-714-2331 www.rpiindustries.com

220 ROUTE 70, MEDFORD, NJ 08055

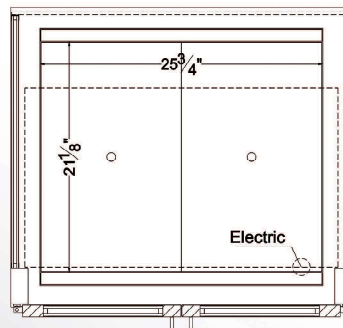
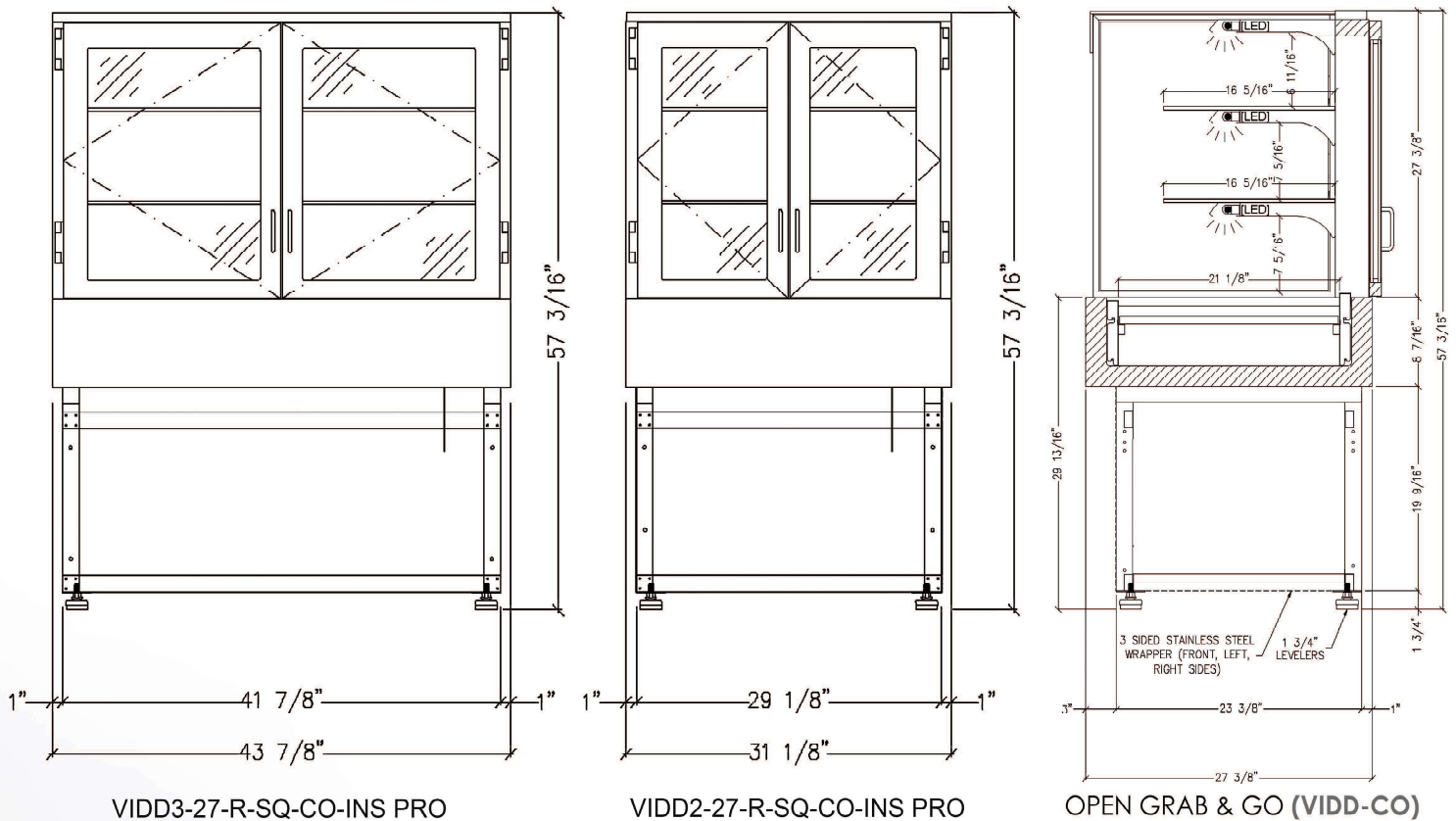
RPI INDUSTRIES, INC. v5_12_17

VIENNA **PRO** DRY DISPLAY SERIES

PROJECT: _____

TOLL FREE: 800-525-3692

MODEL # VIDD-SQ-CO-INS PRO (GRAB & GO)



NOTE / IMPORTANT: VIENNA DRY PRO SERIES DISPLAYS ARE PROVIDED WITH 6' CORD & PLUG ATTACHED TO DIRECTLY TO THE DISPLAY CASE

CONSULT FACTORY FOR ADDITIONAL INFORMATION

RPI in line with it's policy to continually improve it's product reserves the right to change materials and specifications without notice.

CALL TOLL FREE: 800-525-3692 (609-714-2330)

FAX: 609-714-2331 www.rpiindustries.com

220 ROUTE 70, MEDFORD, NJ 08055

RPI INDUSTRIES, INC. v5_12_17