

## VIENNA-PRO



REFRIGERATED DISPLAY CASE

### FEATURES

- #4 Stainless Exterior
- Gray Trim Insulated Glass / Square Profile
- LED Lighting
- Rear Breathing
- Hinged Rear Doors
- Slide In Base For Counter Install
- Optional Flex Panel Front And Side

### MODEL

VICD2-27-R-SQ-CQ-INS PRO

VICD3-27-R-SQ-CO-INS PRO

**Quantities *limited* and available on a *first come, first serve* basis**  
*Contact RPI customer service for additional information*

# VIENNA **PRO** COLD DISPLAY SERIES

**PROJECT:** \_\_\_\_\_  
**ITEM:** \_\_\_\_\_ **QUANTITY:** \_\_\_\_\_

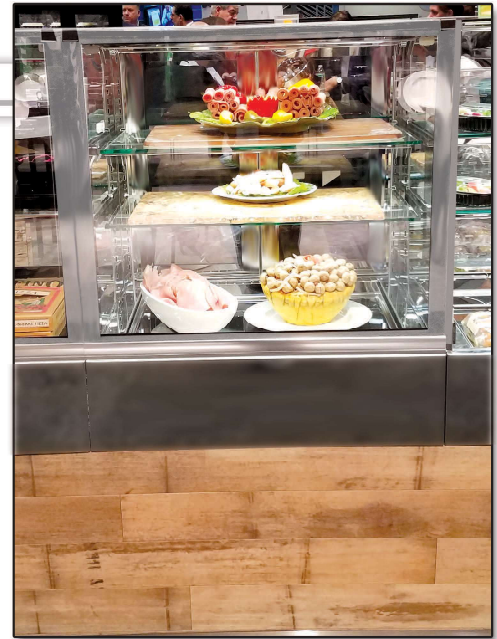
## MODEL # VICD-SQ INS PRO

### SPECIFICATIONS

The Vienna PRO Series VICD-R-SQ-INS PRO is a full service self contained rear breathing refrigerated merchandiser with a stainless steel exterior / interior and tube steel constructed base. Features include a square glass profile with insulated glass front, top and sides 2 glass shelves and energy efficient LED lighting under each shelf and top canopy. The unit is available in two lengths, designed as free-standing, and with a base to accommodate optional flex series panel system. Units can also be used as a slide-in style display, with optional trim-flange and legs.

**Available lengths:** ☐ 31 1/8" ☐ 43 7/8"  
**Available depths:** ☐ 27 3/8"  
**Available heights:** ☐ 27 3/8" (Display Area)

UNITS CAN BE DESIGNED FOR CONTINUAL  
**MODULAR SHOWCASE LINE-UPS!**



UNIT SHOWN WITH OPTIONAL FLEX SERIES PANELING

### STANDARD FEATURES

- Self-contained refrigeration
- Squared glass profile
- **Top Display Area:** Grey Trim Glass with #4 stainless steel interior & exterior
- PRO Series base finished in #4 stainless steel
- Insulated glass sides
- Insulated Tilt-Out front & Lift-up top glass panels
- Closed front for service application
- Hinged rear see-through access doors
- 2 Adjustable interior glass shelves
- Energy efficient LED lighting
- Programmable digital display controller
- 6' Cord & Plug
- Adjustable Levelers
- ETL listed in accordance with UL 471 and NSF 7 standards
- Environmentally safe refrigerant
- Rear Breathing
- 5 Year Compressor Warranty
- Floor Drain Required

### OPTIONAL FEATURES

- ☐ Remote Refrigeration
- ☐ Powder Coat Exterior (20 Available colors, see color chart)
- ☐ #8 Mirror Polished Stainless Steel Exterior Trim
- ☐ 3 Sided Trim Flange \*\*\*
- ☐ Flex Series Paneling Profiles:
  - ☐ HF (Half Full) ☐ HT (Half Tapered)
- ☐ Flex Series Flat Paneling Finish Options:
  - ☐ #4 Brushed Stainless Steel ☐ #8 Mirror Polished Stainless Steel
  - ☐ Laminate ☐ Wood Veneer
- ☐ 6" Casters \*
- ☐ 6" Adjustable Legs \*
- ☐ 8" Adjustable Legs \*



MODEL	L	D	H	VOLT	AMP	PLUG	WT	REFRIG.	CUT-OUT SIZES**
VICD2-27-R-SQ-SC-INS PRO	31 1/8	27 3/8	27 3/8	115	5.7	5-15P	504	R134a	31 3/8 x 27 5/8
VICD3-27-R-SQ-SC-INS PRO	43 7/8	27 3/8	27 3/8	115	6.0	5-15P	548	R134a	44 1/8 x 27 5/8

\* **NOTE / IMPORTANT:** ADD 6" ADJUSTABLE LEGS / 6" CASTERS for 34" COUNTER HEIGHT / ADD 8" ADJUSTABLE LEGS for 36" COUNTER HEIGHT

\*\* **CUT-OUT SIZES FOR SLIDE-IN APPLICATION**

\*\*\* **SLIDE-IN STYLE UNIT TO INCLUDE NON-WEIGHT BEARING TRIM FLANGE**

**PRO SERIES IS NOT AVAILABLE IN DROP-IN STYLE**



Conforms to UL Standard 471,  
 and NSF Standard 7; Certified  
 To CSA Standard C22.2 No.120

CALL TOLL FREE: 800-525-3692 (609-714-2330)

FAX: 609-714-2331 [www.rpiindustries.com](http://www.rpiindustries.com)

220 ROUTE 70, MEDFORD, NJ 08055

**RPI INDUSTRIES, INC.** v4\_3\_17

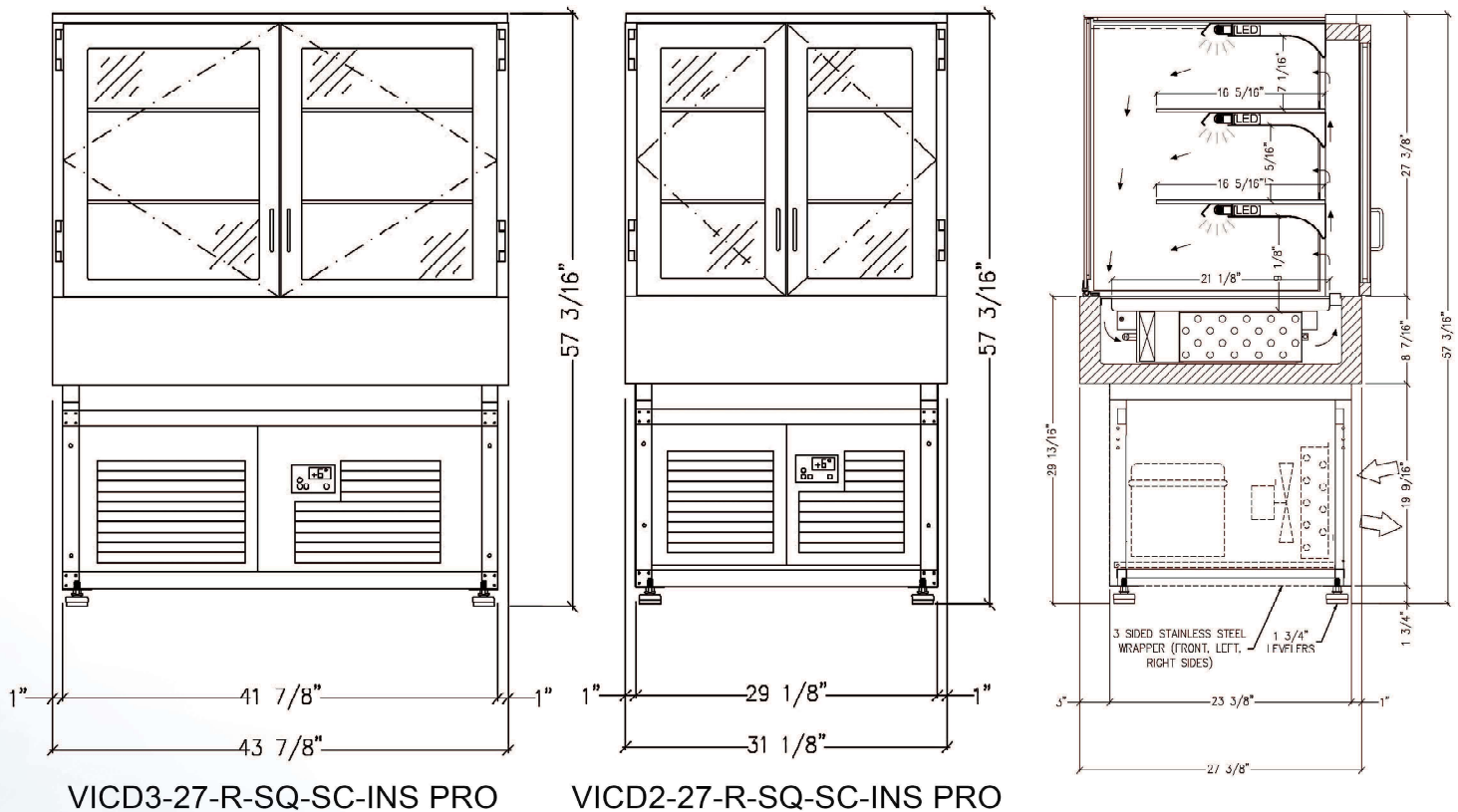


# VIENNA **PRO** COLD DISPLAY SERIES

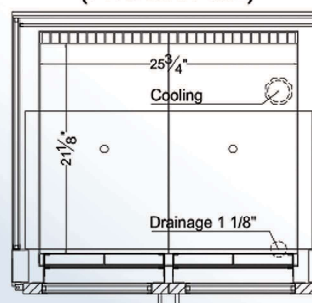
**PROJECT:** \_\_\_\_\_

**TOLL FREE: 800-525-3692**

## MODEL # VICD-SQ INS PRO



(FLOOR Plan)



### Electrical & Plumbing locations

(2 1/2" HOLE REQUIRED FOR COOLING AND DRAINAGE LINES)

1. A 1" diameter drain is provided. The drain **MUST** be connected to a floor drain or storage container **AT TIME OF INSTALLATION**.
2. Rear ventilation louvers, **MUST** be provided in the cabinet or counter and located so to provide full ventilation for the condensing unit.
3. The **PRO** merchandisers are designed for use in locations where temperatures and humidity do not exceed 75 degrees and 55% R.H. Locate away from direct sunlight, rapid air currents and extreme temperature changes. Exposure to air currents from ceiling fans, air conditioners, ovens, etc. will disrupt the cases air current and refrigeration zone within. Any adverse field conditions stated above will void warranty.

RPI in line with it's policy to continually improve it's product reserves the right to change materials and specifications without notice.

CALL TOLL FREE: 800-525-3692 (609-714-2330)

FAX: 609-714-2331 [www.rpiindustries.com](http://www.rpiindustries.com)

220 ROUTE 70, MEDFORD, NJ 08055

**RPI** INDUSTRIES, INC. v4\_3\_17