

4-TIER HOT DISPLAY OLYMPUS V-ME

SPECIFICATIONS

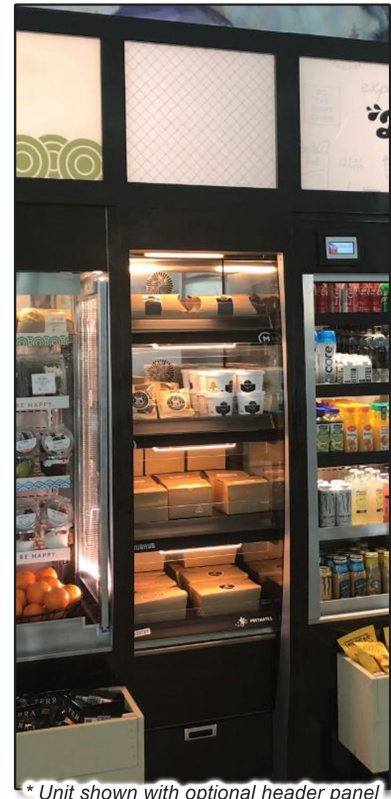
Patented technology is designed to allow hot air convection, which enables the individual zones to be controlled by maintaining the quality of the product. The innovative technology of Flexeserve Zone® gives the versatility of tailoring the hot food offerings, reducing product waste from the ability to turn zones on or off predicated upon the time of day and customer demands!

DESIGNED TO ALIGN WITH OLYMPUS V AIR-SCREEN GRAB & GO REFRIGERATORS!

Available lengths: ☐ 15 3/4" ☐ 23 3/4" ☐ 40 1/4"

Available depths: ☐ 34"

Available heights: ☐ 78"



* Unit shown with optional header panel

STANDARD FEATURES

- Individually controlled temperature zones
- Variable temperature control per zone
- Energy efficient LED lighting
- Stainless steel interior
- Fan Guard Included (one per zone)
- Standard grade laminate exterior
- Olympus V Series matching end panels
- Squared top canopy
- Heat proof ticket edge
- 8 1/2" fabricated front panel for raised unit matching the Olympus V series height
- ETL Listed in Accordance with UL 197 and NSF 4 Standards

MARKETING ACCESSORIES

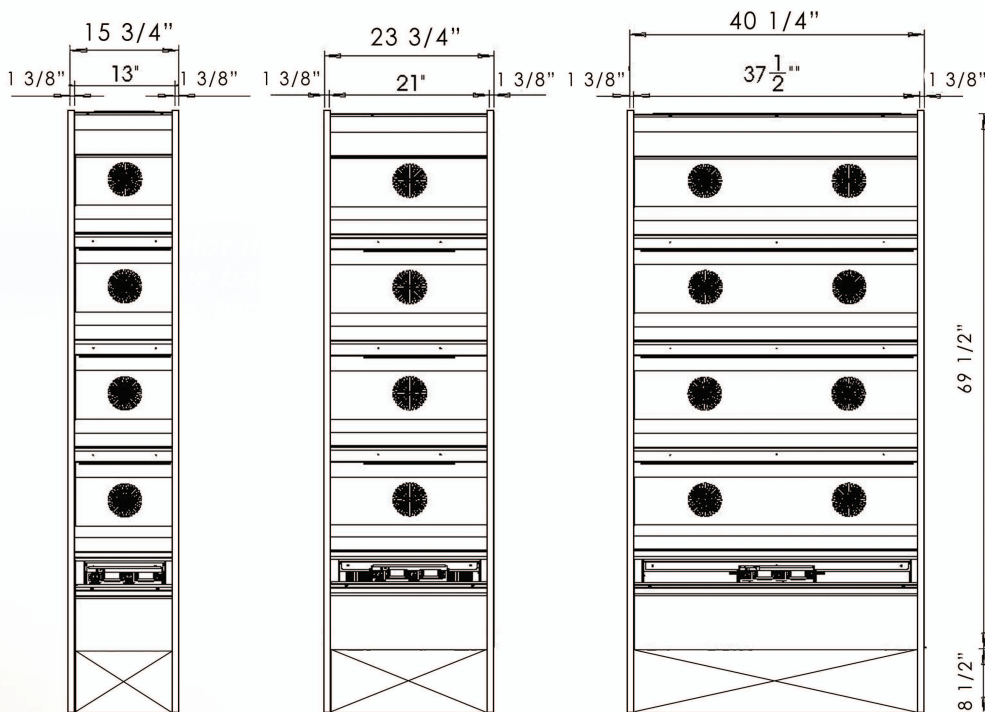
- ☐ Angled Merchandising Insert (Order 1 to fill the shelf, 2 for FXZNA10S4N-OLY-V-ME)
- ☐ Merchandising Divider (Recommended for use with Angled Inserts)
- ☐ Merchandising Tray
 - ☐ FXZNA40S4N-OLY-V-ME (1 to fill the shelf)
 - ☐ FXZNA60S4N-OLY-V-ME (2 to fill the shelf)
 - ☐ FXZNA10S4N-OLY-V-ME (4 to fill the shelf)

OPTIONAL FEATURES

- ☐ #8 Mirrored polished stainless steel, including **top fascia*** and **lower valance***
- ☐ Lighted top header (Graphics by others)
- ☐ #4 Brushed stainless steel exterior, including **top fascia*** and **lower valance***
- ☐ Special Laminates
- ☐ Wood Veneers (Stained & Sealed)
- ☐ Back Panel Kit
- ☐ Night Blind

- ☐ Merchandising Rack - Narrow (Recommended for use with Merchandising Trays)
- ☐ Merchandising Rack - Standard (Recommended for use with Merchandising Trays)
- ☐ Black Metal Condiment Basket (hangs from ticket edge)
- ☐ Acrylic Condiment Basket (Recommended hang from riser)
- ☐ Variety box of recommended packaging samples

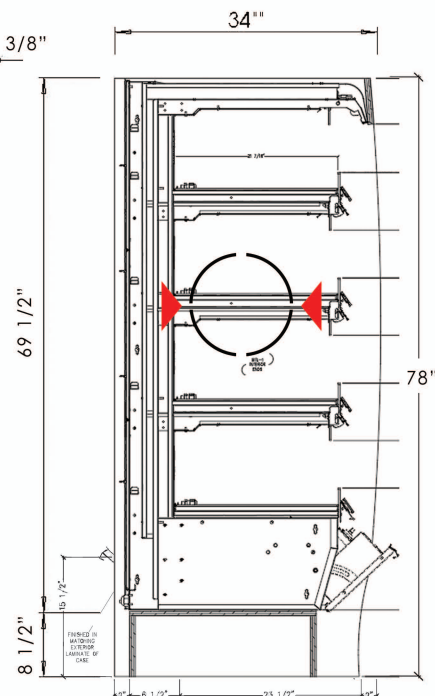
4-TIER HOT DISPLAY OLYMPUS V-ME



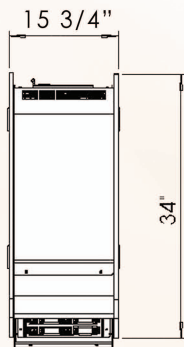
FXZNA40S4N-OLY-V-ME

FXZNA60S4N-OLY-V-ME

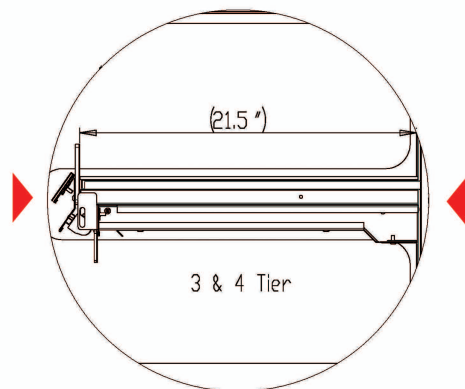
FXZNA10S4N-OLY-V-ME



Equipment Specifications ...



PLUG CONFIGURATION



NOTE: Units must be accessible from the rear for servicing. In the event these are against a wall, unit must be pulled forward to access the rear.

INTERIOR SHELF DEPTH

MODEL	L	D	H*	VOLT	AMP	PLUG	WT
FXZNA40S4N-OLY-V-ME	15 3/4"	34"	78"	SINGLE PHASE 208/230	14.3	6-20P	360
FXZNA60S4N-OLY-V-ME	23 3/4"	34"	78"	SINGLE PHASE 208/230	14.3	6-20P	432
FXZNA10S4N-OLY-V-ME	40 1/4"	34"	78"	SINGLE PHASE 208/230	28.7	6-30P	584

* HEIGHT REFLECTS MATCHING OLYMPUS AIR SCREEN DIMENSIONS

USA Patent Number - 9,462,897 B2



Conforms to UL Standard 197,
and NSF Standard 4; Certified
To CSA Standard C22.2 No.109

RPI in line with its policy to continually improve its products reserves the right to change materials and specifications without notice.

CALL TOLL FREE: 800-525-3692 (609-714-2330)

FAX: 609-714-2331 www.rpiindustries.com

220 ROUTE 70, MEDFORD, NJ 08055