

MODEL # VIFT (FS)

SPECIFICATIONS

The unique design of the refrigerated plate mounted underneath the NSF quartz stone creates a freezing pattern. This process of freezing allows for a “natural frost” that accentuates the beauty of the displayed products.

Available lengths: ☐ 24" ☐ 36" ☐ 48" ☐ 60" ☐ 72"

Available depths: ☐ 18" ☐ 24"

Available adjustable heights: ☐ 27 1/8" to 28 1/2"



SHOWN WITH OPTIONAL VISI-BOND GLASS ENCLOSURE & CUSTOM MILLWORK COUNTER

STANDARD FEATURES

- Undermount Frost Top Unit
- Metal Top Plate
- Insulated Perimeter and Housing
- Self-Contained Refrigeration
- Carbon Steel Support Frame
- Stainless Steel Adjustable Levelers
- 115V/60/1
- 24 Hour On & Off Timer (Shipped Loose)
- Switch
- (1) Axial Fan (Shipped Loose)
- (2) Aluminum Louvers (Shipped Loose)
- (1) Air Intake Baffle (shipped loose)
- ETL Listed in Accordance with UL471 and NSF 2 Standards
- Conforms to NSF STD 2 Refrigeration
- Tubes Of Thermal Mastic (Shipped Loose)
Qty. Varies Per Unit
- (1) Notched Trowel (Shipped Loose)

OPTIONAL FEATURES

- ☐ Remote Refrigeration (Solenoid Valve Shipped Loose By RPI)
- ☐ Visi-Bond Glass Enclosure
- ☐ Custom Fabricated Millwork Counter (Consult Factory)

NOTE: Tested and approved top materials to use:

Corian Quartz and Cambria (NSF)

Absolute Black Granite (Not NSF)

3cm Maximum top thickness

NOTE: Louvered air grill must be aligned with condensing unit and intake baffle must be installed per drawing and installation manual for proper operation / ventilation.

NOTE: The following solid surface materials have not been tested and are not approved for use with Ice Rock, Corian Solid Surface, Meganite, Swanstone, Staron, etc.

MODEL (SELF-CONTAINED.)	FROST SIZE A x B		OVERALL SIZE C x D		SUBTOP CUT OUT SIZE	ELECTRIC	AMPS	REFRIG.
VIFT1824-SC(FS)	18	24	19 1/8	25 1/8	20 x 26	120V/60/1	4.9	404A
VIFT1836-SC(FS)	18	36	19 1/8	37 1/8	20 x 38	120V/60/1	4.9	404A
VIFT1848-SC(FS)	18	48	19 1/8	49 1/8	20 x 50	120V/60/1	7.2	404A
VIFT1860-SC(FS)	18	60	19 1/8	61 1/8	20 x 62	120V/60/1	7.2	404A
VIFT1872-SC(FS)	18	72	19 1/8	73 1/8	20 x 74	120V/60/1	9.0	404A
VIFT2424-SC(FS)	24	24	25 1/8	25 1/8	26 x 26	120V/60/1	4.9	404A
VIFT2436-SC(FS)	24	36	25 1/8	37 1/8	26 x 38	120V/60/1	7.2	404A
VIFT2448-SC(FS)	24	48	25 1/8	49 1/8	26 x 50	120V/60/1	7.2	404A
VIFT2460-SC(FS)	24	60	25 1/8	61 1/8	26 x 62	120V/60/1	7.2	404A
VIFT2472-SC(FS)	24	72	25 1/8	73 1/8	26 x 74	120V/60/1	9.0	404A



CALL TOLL FREE: 800-525-3692 (609-714-2330)

FAX: 609-714-2331 www.rpiindustries.com

220 ROUTE 70, MEDFORD, NJ 08055

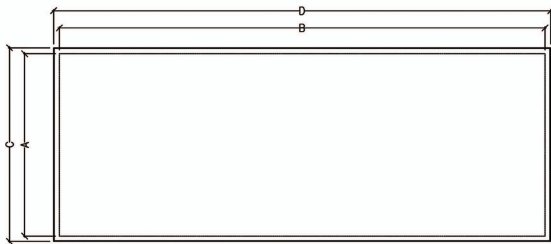
RPI INDUSTRIES, INC. v10_9_23

Ice Rock

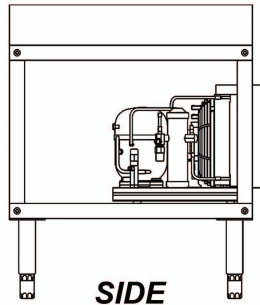
MODEL # VIFT (FS)

PROJECT:

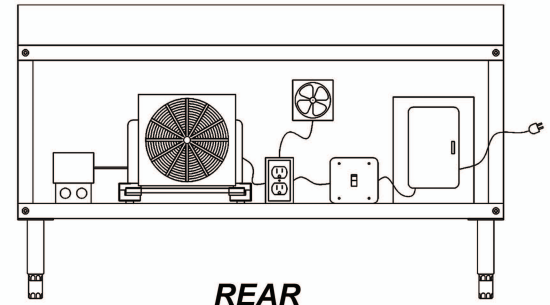
TOLL FREE: 800-525-3692



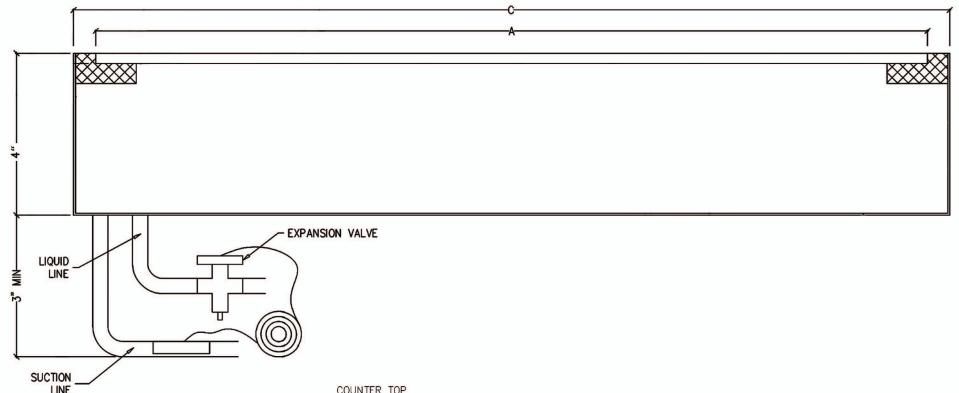
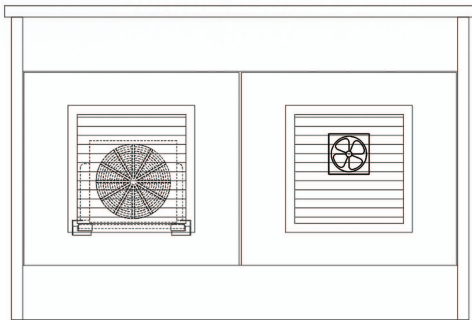
PLAN



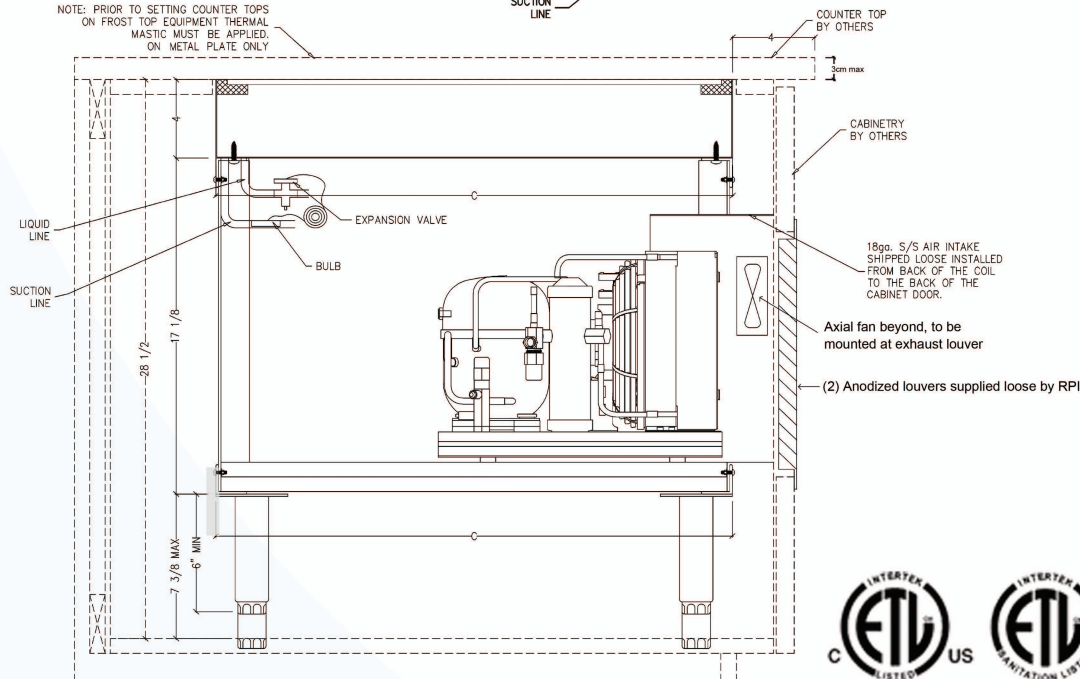
SIDE



REAR



NOTE: PRIOR TO SETTING COUNTER TOPS ON FROST TOP EQUIPMENT THERMAL MASTIC MUST BE APPLIED ON METAL PLATE ONLY



Conforms to UL Standard 65, and NSF Standard 2

RPI merchandiser is designed for use in stores where ambient temperatures and humidity do not exceed 75 Degrees Fahrenheit and 55% R.H. Locate away from direct sunlight, rapid air currents and extreme temperature changes. Exposure to air currents from ceiling fans, air conditioning diffusers, ovens, etc. will disrupt the case air curtain and refrigerated zone. Refrigerated Displays are designed to maintain pre-chilled products. Adding or loading warm products above 41 Degrees Fahrenheit can affect the temperature in the entire cabinet. Any adverse field conditions stated above will void warranty.

RPI in line with its policy to continually improve its products reserves the right to change materials and specifications without notice.

CALL TOLL FREE: 800-525-3692 (609-714-2330)

FAX: 609-714-2331 www.rpiindustries.com

220 ROUTE 70, MEDFORD, NJ 08055

RPI INDUSTRIES, INC. v10_9_23