

MODEL # SCMC

SPECIFICATIONS

The Monarch Chocolate SCMC Series is a refrigerated confectionary display case with a choice of standard grade plastic laminate exterior ends and fixed flat front glass. Unit is also available in non-refrigerated.

- Available lengths: 48" 60" 72" 96"
Available depths: 24" 30"
Available heights: 48"



STANDARD FEATURES

- Self-Contained Refrigeration
- Fixed Flat Slanted Front Glass
- Standard Grade Laminate Exterior
- Black Base
- Mirrored Interior with Vision End Panels
- White Laminated Deck
- LED Top Canopy Light
- (2) Tempered Glass Shelves
- See-Through Mirrored Rear Sliding Doors
- Limited Base Storage
- Temperature and Humidity Controlled
- Thermometer
- 8' Cord and Plug
- ETL Listed in Accordance with UL 471 and NSF 7 Standards
- Environmentally Safe Refrigerant
- 1 Year Parts and Labor Warranty
- Built-In Condensate Evaporator (No Floor Drain Required)
- 5 Year Compressor Warranty

OPTIONAL FEATURES

- Remote Refrigeration
- Stainless Steel Exterior Finish
 - #4 #6 #8
- Special Laminates
- Wood Veneers (Unfinished)
- Wood Veneers (Stained & Sealed)
- Miscellaneous Trim
- Brass Trim and Hardware
- Lights Under Shelves (Consult Factory)
- Wire Shelves
 - Brass White Black Chrome
- Casters (Increases Height by 4")
- Adjustable Legs (Consult Factory for Sizes)
- Mirrored Polished Stainless Steel Interior Ends (#8 Finish)
- Rear Door Locks



CALL TOLL FREE: 800-525-3692 (609-714-2330)

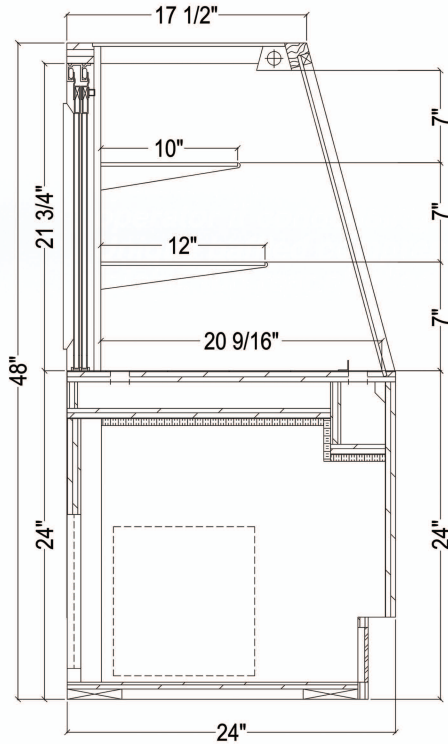
FAX: 609-714-2331 www.rpiindustries.com

220 ROUTE 70, MEDFORD, NJ 08055



RPI INDUSTRIES, INC. v8_31_17

MODEL # SCMC



SELF - CONTAINED

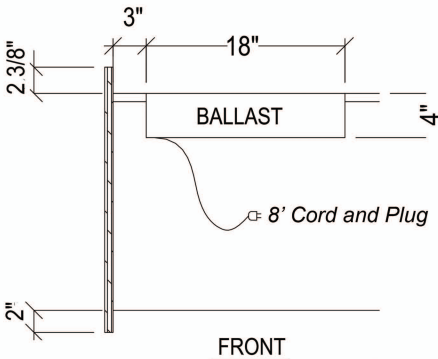
MODEL	L	D	H	HP	VOLT	AMP	PLUG	WT	REFRIG.
SCMC48R	48	24/30	48	1/4	115	6.0	5-15P	475	134A
SCMC60R	60	24/30	48	1/4	115	6.0	5-15P	560	134A
SCMC72R	72	24/30	48	1/4	115	6.1	5-15P	725	134A
SCMC96R	96	24/30	48	1/4	115	6.2	5-15P	850	134A

AMBIENT

MODEL	L	D	H	VOLT	AMP	PLUG	WT
SCMC48D	48	24/30	48	115	.11	5-15P	350
SCMC60D	60	24/30	48	115	.13	5-15P	375
SCMC72D	72	24/30	48	115	.16	5-15P	425
SCMC96D	96	24/30	48	115	.21	5-15P	500

REMOTE - REFRIGERATED

MODEL	BTU @ 20° F	VOLT	AMP	PLUG	WT	REFRIG.
SCMC48R-RR	1890	115	.75	5-15P	400	Verify
SCMC60R-RR	1890	115	.80	5-15P	475	Verify
SCMC72R-RR	1890	115	.80	5-15P	650	Verify
SCMC96R-RR	1890	115	.85	5-15P	775	Verify



Conforms to UL Standard 471,
and NSF Standard 7; Certified
To CSA Standard C22.2 No.120



Electrical & Plumbing locations

RPI refrigerated merchandisers configured for sale for use in the United States meet or surpass the requirements of the DOE 2017 energy efficiency standards

1. All Remote Units must be run to a floor drain at time of installation.

2. The SCMC merchandiser is designed for use in stores where temperature and humidity do not exceed 75 degrees F and 55% R. H. Locate away from direct sunlight, rapid air currents and extreme temperature changes. Confectionary cases are designed to refrigerate at 60 degrees to 67 degrees. Any adverse field conditions stated above will void warranty.

RPI in line with it's policy to continually improve it's product reserves the right to change materials and specifications without notice.

CALL TOLL FREE: 800-525-3692 (609-714-2330)

FAX: 609-714-2331 www.rpiindustries.com

220 ROUTE 70, MEDFORD, NJ 08055

RPI INDUSTRIES, INC. v8_31_17