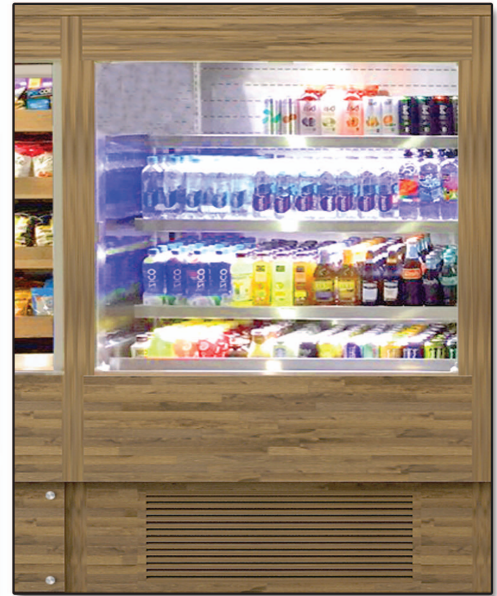


MODEL # SCASR-II-MM

SPECIFICATIONS

The Olympus II Air Screen SCASR-II-MM Series is a grab and go style refrigerator. The self-contained refrigeration system includes digital controls allowing unit to engage in minimal defrost cycles. Front mounted red indicator light alerts operator if condensing unit requires cleaning. Unique baffled compressor housing for front air intake, top rear air discharge reducing noise levels plus zero clearance from wall installation. Unit comes standard with 4 adjustable extra deep shelves and is available with energy efficient LED lighting underneath shelving.

- Available lengths: 36" 48" 60" 72"
 Available depths: 32"
 Available heights: 78"



STANDARD FEATURES

- DOE 2017 Compliant
- Self-Contained Refrigeration
- Squared Top Canopy
- Metal Frame Base Construction
- Removable Front Panel & Louvered Air Grill for Easy Access to Compressor
- Standard Grade Laminate Exterior
- Top Bracket designed to accommodate header panel
- Brushed Stainless Steel Interior Ends
- Stainless Steel Perforated Interior Back Panel
- LED Top Canopy Light
- (4) Adjustable Stainless Steel Extra Deep Shelves for Maximum Capacity, with LED Lighting
- Removable Stainless Steel Deck Pan with Hemmed Edge to Contain Spills
- Electronic Digital Temperature Control and Defrost Termination
- Red Indicator Light Alerts Operator if Condenser Requires Cleaning
- Unique Internal Baffle Design for Compressor Noise Reduction
- Front Air Intake with Top Rear Air Discharge for Zero Clearance
- Easy Slide-Out Condensing Unit
- 8' Cord and Plug
- ETL Listed in Accordance with UL 471 and NSF 7 Standards
- Conforms to NSF STD 7 Type II Refrigeration
- Environmentally Safe Refrigerant
- 1 Year Parts and Labor Warranty
- Floor Drain Required
- 5 Year Compressor Warranty

OPTIONAL FEATURES MOST POPULAR

- Condensate Evaporator Pan
- 24" High Header Panel (Graphics by others)
 - 16" High Lightbox Insert Header Backlit top header
 - Laminate top Header
- Stainless Steel Exterior Finish
 - #4 #8
- Special Laminates / Acrylic Exterior Finishes (Consult Factory)
- Remote Refrigeration
- Mirrored Polished Stainless Steel Interior Ends (#8 Finish)
- Mirrored Polished Stainless Steel Perforated Interior Back Panel (#8 Finish)

ADDITIONAL OPTIONAL FEATURES

- Front Decorative Panels (Remote Refrigerated Units Only, Consult Factory)
- Wood Veneers (Stained & Sealed)
- Top Mount Proximity Motion Sensor for interior light
- Wire Shelves
 - White Black Chrome
- Tempered 3/8" Glass Shelving
- U Shape Front Shelf Merchandiser
- Casters (Increases Height by 6")
- Adjustable Legs (Consult Factory for Sizes)
- Powder Coated Interior Back Panel and Hardware
 - Black White Custom Color
- Finished Back with Air Grill:
 - Stainless Steel Black
- Front Merchandising Wire Baskets (Slat Wall Exterior Required, Consult Factory)
 - Style A Style B Style C
- Front Merchandising Tables & Ladders (Top Mount or Remote units only)
 - Style A Style B



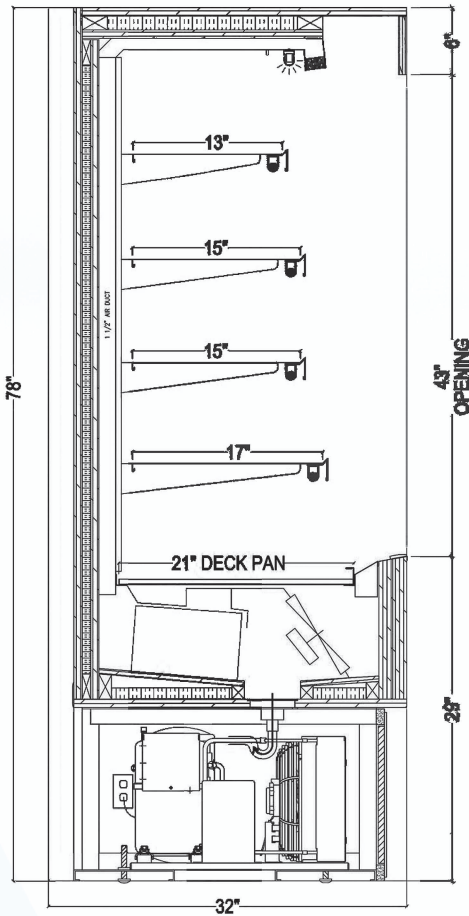
Conforms to UL Standard 471, and NSF Standard 7; Certified To CSA Standard C22.2 No.120



CALL TOLL FREE: 800-525-3692 (609-714-2330)
 FAX: 609-714-2331 www.rpiindustries.com
 220 ROUTE 70, MEDFORD, NJ 08055

RPI INDUSTRIES, INC. v3_18_24

MODEL # SCASR-II-MM



SELF - CONTAINED - Floor Drain

MODEL	L	D	H	HP	VOLT	AMP	PLUG	WT	REFRIG.
SCAS36R-II-MM	36	32	78	1/2	115	14.6	5-20P	675	134A
SCAS48R-II-MM	48	32	78	1	115/208-230 4 wire	11.0	L14-20P	900	404A
SCAS60R-II-MM	60	32	78	1 1/4	115/208-230 4 wire	11.0	L14-20P	1020	404A
SCAS72R-II-MM	72	32	78	1 1/4	115/208-230 4 wire	14.1	L14-20P	1150	404A

SELF - CONTAINED - With Evaporator Pan

MODEL	L	D	H	HP	VOLT	AMP	PLUG	WT	REFRIG.
SCAS36R-II-MM	36	32	78	1/2	115	14.6	5-20P*	675	134A
SCAS48R-II-MM	48	32	78	1	115/208-230 4 wire	15.8	L14-30P	900	404A
SCAS60R-II-MM	60	32	78	1 1/4	115/208-230 4 wire	15.8	L14-30P	1020	404A
SCAS72R-II-MM	72	32	78	1 1/4	115/208-230 4 wire	19.9	L14-30P	1150	404A

* Adding evaporator pan option to 36" unit requires a separate 115V circuit (pan shipped loose).

NOTE: A minimum of 18" clearance needed above unit for air discharge for self contained units.

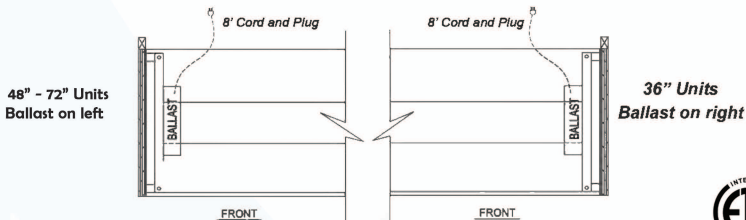
* 448a refrigeration available at no additional cost - please specify

REMOTE - REFRIGERATED

MODEL	BTU @ 20 F	EVAP @ 90 AMB	VOLT	AMP	PLUG	WT	REFRIG.
SCAS36R-RR-II-MM		4140	115	10.1	5-15P	625	Verify
SCAS48R-RR-II-MM		7470	115	10.6	5-15P	800	Verify
SCAS60R-RR-II-MM		9960	115	10.6	5-15P	920	Verify
SCAS72R-RR-II-MM		9960	115	11.1	5-15P	1050	Verify

GLYCOL

MODEL	BTU @ 20 F	EVAP @ 90 AMB	VOLT	AMP	PLUG	WT	GPM	REFRIG.
SCAS36R-RR-GL-II-MM		4140	115	10.1	5-15P	625	1.0	Verify
SCAS48R-RR-GL-II-MM		7470	115	10.6	5-15P	800	2.0	Verify
SCAS60R-RR-GL-II-MM		9960	115	10.6	5-15P	920	2.5	Verify
SCAS72R-RR-GL-II-MM		9960	115	11.1	5-15P	1050	2.5	Verify



Electrical & Plumbing locations



Conforms to UL Standard 471, and NSF Standard 7; Certified To CSA Standard C22.2 No.120

Conforms to NSF STD 7
TYPE II

DOE 2017
 Energy Efficiency
 Compliant

RPI refrigerated merchandisers configured for sale for use in the United States meet or surpass the requirements of the DOE 2017 energy efficiency standards

1. Refrigeration System is designed so air will flow front to rear. Unobstructed air flow must be maintained to ensure unit performance and maintain warranty.
2. The SCAS-II-MM merchandiser is designed for use in stores where ambient temperatures and humidity do not exceed 80 Degrees Fahrenheit and 60% R.H. Locate away from direct sunlight, rapid air currents and extreme temperature changes. Exposure to air currents from ceiling fans, air conditioning diffusers, ovens, etc. will disrupt the case air curtain and refrigerated zone. Refrigerated Displays are designed to maintain pre-chilled products. Adding or loading warm products above 41 Degrees Fahrenheit can affect the temperature in the entire cabinet. Any adverse field conditions stated above will void warranty.

RPI in line with its policy to continually improve its products reserves the right to change materials and specifications without notice.

CALL TOLL FREE: 800-525-3692 (609-714-2330)

FAX: 609-714-2331 www.rpiindustries.com

220 ROUTE 70, MEDFORD, NJ 08055