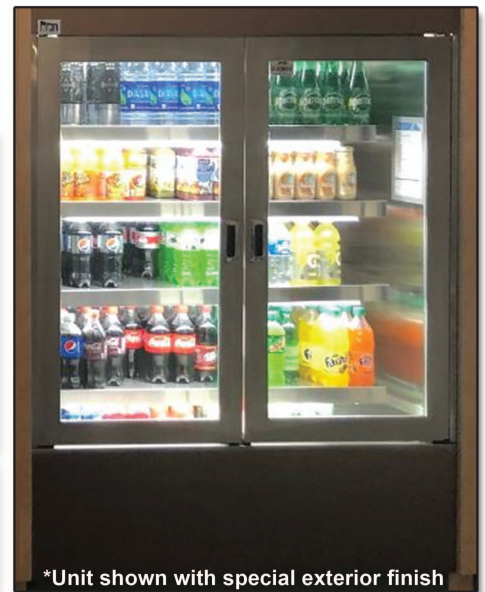


MODEL # SCAS-V-S-PD

SPECIFICATIONS

The SCAS-V-S-PD Squared Profile Olympus Porte Cache air screen is an open refrigerated merchandiser that offers a retractable insulated glass lockable pocket door system. This allows the unit to be utilized as a hinged door merchandiser during off peak hours with minimal energy consumption. Easy patented door-slide mechanism gives operator quick access to change from a glass door merchandiser to a fully open grab and go refrigerator.



*Unit shown with special exterior finish

Available lengths: ☐ 48"
 Available depths: ☐ 32"
 Available heights: ☐ 78 1/2"

STANDARD FEATURES

- Self-Contained Refrigeration
- Squared Top Canopy
- Solid Squared End Panels
- Smart Controller Electronic Digital Temperature Control and Defrost Termination
- One Set of (2) Lockable Insulated Front Hinges Pocket Door
- Metal Frame Base Construction with Lift-Out Black
- Louvered Air Grill For Easy Access To Compressor
- Standard Grade Laminate Exterior
- Brushed Stainless Steel Interior Ends
- Stainless Steel Perforated Interior Back Panel
- 4000K LED Top Canopy Light
- Vertical Recessed Power Supply For Undershelf Light
- (4) Adjustable Stainless Steel Extra Deep Shelves for Maximum Capacity, with 3000K LED Lighting
- Removable Stainless Steel Deck Pan with Hemmed Edge to Contain Spills
- Red Indicator Light Alerts Operator if Condenser Requires Cleaning
- Unique Internal Baffle Design for Compressor Noise Reduction
- Front Air Intake with Top Rear Air Discharge for Zero Clearance
- Easy Slide-Out Condensing Unit For Service 8' Cord and Plug
- One Set of (2) Lockable Insulated Front Hinges Pocket Door
- ETL Listed in Accordance with UL 471 and NSF 7 Type II Refrigeration
- Environmentally Safe Refrigerant
- 1 Year Parts and Labor Warranty
- 5 Year Compressor Warranty
- Built In Evaporator System

OPTIONAL FEATURES

- ☐ Side Vision End Panels
- ☐ Heated Insulated Glass Vision End Panels
- ☐ Smart Door – In closed door position, food simulator activates an electromagnetic lock if product registers above 40°F
- ☐ Smart Shade – In open air screen position, food simulator activates an electric roll down shade if product registers above 40°F
- ☐ Remote Refrigeration
- ☐ Front Decorative Panels (Remote Refrigerated Units Only, Consult Factory)
- ☐ Special Laminates
- ☐ Stainless Steel Exterior Finish
 - ☐ #4 ☐ #8
- ☐ Finished Back with Air Grill:
 - ☐ Stainless Steel ☐ Black
- ☐ Wood Veneers (Stained & Sealed)
- ☐ Tempered 3/8" Glass Shelving
- ☐ Casters:
 - ☐ 3" ☐ 6"
- ☐ Adjustable Legs Up To 6"
- ☐ Powder Coated Interior Back Panel and Hardware
 - ☐ Black ☐ White ☐ Custom Color
- ☐ Mirrored Polished Stainless Steel Interior Ends (#8 Finish)
- ☐ Mirrored Polished Stainless Steel Perforated Interior Back Panel (#8 Finish)
- ☐ Joining Kit Hardware
- ☐ Acrylic Product Stop For Stainless Steel Shelving
- ☐ 3000K LED Lighting

CALL TOLL FREE: 800-525-3692 (609-714-2330)

FAX: 609-714-2331 www.rpiindustries.com

220 ROUTE 70, MEDFORD, NJ 08055



INDUSTRIES, INC. v8_2_24

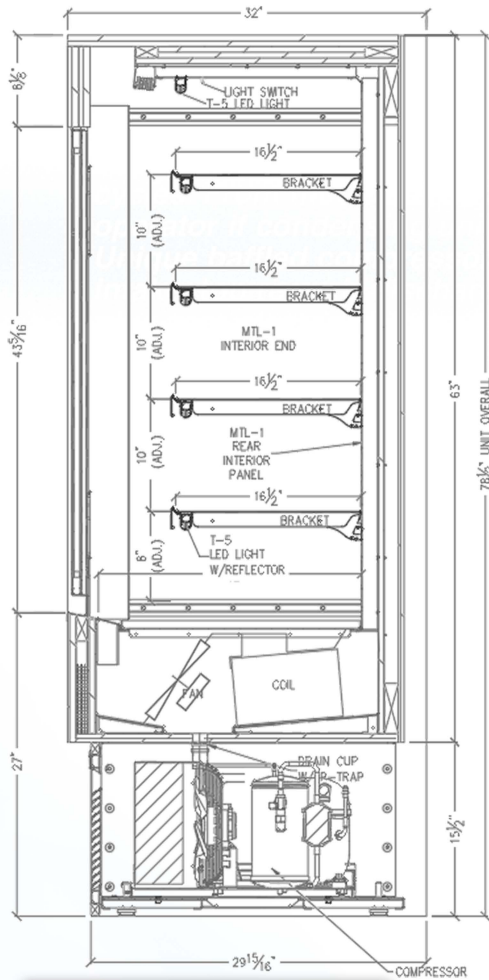


Conforms to UL Standard 471,
and NSF Standard 7; Certified
To CSA Standard C22.2 No.120

Conforms to NSF STD 7
TYPE II

DOE 2017
Energy Efficiency
Compliant

MODEL # SCAS-V-S-PD



SELF - CONTAINED - With Evaporator Pan

MODEL	L	D	H	HP	VOLT	AMP	PLUG	WT	REFRIG.
SCAS48R-V-S-PD	48	32	78 1/2	1	115/208-230 4 wire	15.8	L14-30P	900	404A

SELF - CONTAINED - Floor Drain

MODEL	L	D	H	HP	VOLT	AMP	PLUG	WT	REFRIG.
SCAS48R-V-S-PD	48	32	78 1/2	1	115/208-230 4 wire	11.0	L14-20P	900	404A

NOTE: A minimum of 18" clearance needed above unit for air discharge for self contained units.

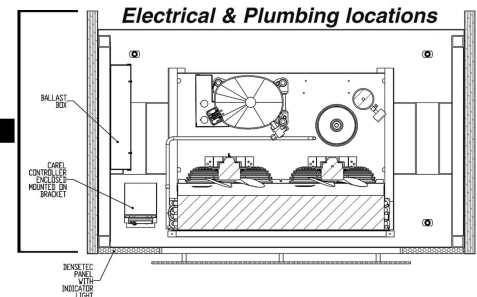
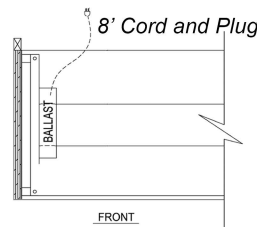
* 448a refrigeration available at no additional cost - please specify

REMOTE - REFRIGERATED - With Evaporator Pan

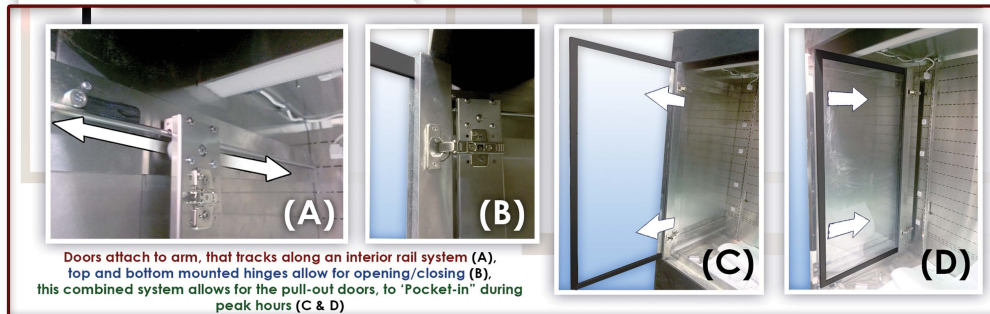
MODEL	BTUH @ 20°F	VOLT	AMP	PLUG	WT	REFRIG.
SCAS48R-V-S-PD-RR	7470	115	10.6	5-15P	800	Verify

GLYCOL - With Evaporator Pan

MODEL	BTUH @ 20°F	VOLT	AMP	PLUG	WT	GPM	REFRIG.
SCAS48R-V-S-PD-RR-GL	7470	115	10.6	5-15P	800	2.0	GLYCOL



HOW THE DOORS WORK



RPI refrigerated merchandisers configured for sale for use in the United States meet or surpass the requirements of the DOE 2017 energy efficiency standards

1. Refrigeration System is designed so air will flow front to rear. Unobstructed air flow must be maintained to ensure unit performance and maintain warranty.
2. The SCAS-V-S-PD merchandiser is designed for use in stores where ambient temperatures and humidity do not exceed 80 Degrees Fahrenheit and 60% R.H. Locate away from direct sunlight, rapid air currents and extreme temperature changes. Exposure to air currents from ceiling fans, air conditioning diffusers, ovens, etc. will disrupt the case air curtain and refrigerated zone. Refrigerated Displays are designed to maintain pre-chilled products. Adding or loading warm products above 41 Degrees Fahrenheit can affect the temperature in the entire cabinet. Any adverse field conditions stated above will void warranty.

RPI in line with its policy to continually improve its products reserves the right to change materials and specifications without notice.

CALL TOLL FREE: 800-525-3692 (609-714-2330)

FAX: 609-714-2331 www.rpiindustries.com

220 ROUTE 70, MEDFORD, NJ 08055

RPI INDUSTRIES, INC. v8_2_24