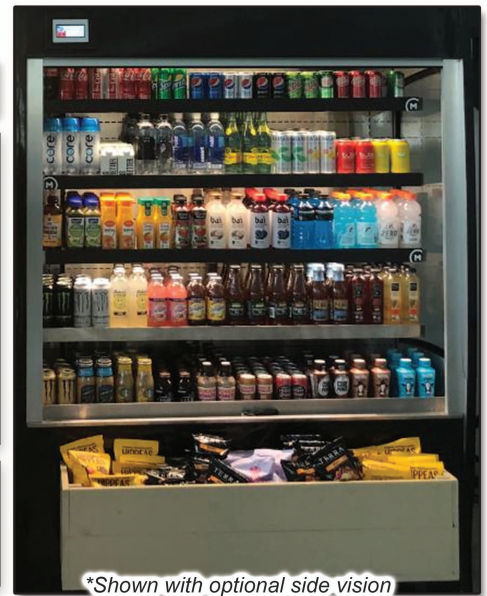


MODEL # SCAS-V-S-TC-PD

SPECIFICATIONS

The Olympus V Turbo Porte Cachee With Patented Lockable Pocket Door System Includes New Turbo Chill Technology For the Ultimate For Food Safety. Unit Has An Internal Sensor Monitoring Food Temperature That Is Preset To Activate Turbo Mode By Closing Motorized Night Shade If Product Reaches 39.5° Degree, Unit Will Stay In Brief Chilling Mode Until Product Achieves 37.5° Degree Which Will Then Reopen Front Night Shade.

- Available lengths: 48"
Available depths: 32"
Available heights: 78 1/2"



*Shown with optional side vision end panels and chip rack

STANDARD FEATURES

- Self-Contained Refrigeration
- Squared Top Canopy
- Solid Squared End Panels
- (NEW) Smart Controller Electronic Food Product Simulator Probe And Safety Sensor (HMI) Interface
- Metal Frame Base Construction with Lift-Out Black Louvered Air Grill For Easy Access To Compressor
- Standard Grade Laminate Exterior
- Brushed Stainless Steel Interior Ends
- Stainless Steel Perforated Interior Back Panel
- 3000K LED Top Canopy Light
- Vertical Recessed Power Supply For Undershelf Light
- (4) Adjustable Stainless Steel Extra Deep Shelves for Maximum Capacity, with 3000K LED Lighting
- Removable Stainless Steel Deck Pan with Hemmed Edge to Contain Spills
- Red Indicator Light Alerts Operator if Condenser Requires Cleaning
- Unique Internal Baffle Design for Compressor Noise Reduction
- Front Air Intake with Top Rear Air Discharge for Zero Clearance
- Easy Slide-Out Condensing Unit For Service
- 8' Cord and Plug
- Turbo Chill Mode
- Motorized Turbo Curtain Comes Down During Turbo Mode
- Standard Air Screen When Not In Turbo Mode
- One Set Of (2) Electro-Magnetic Lock Insulated Front Hinged See Through Pocket Doors
- ETL Listed in Accordance with UL 471 and NSF 7 Type II Refrigeration
- Environmentally Safe Refrigerant
- Floor Drain Required
- 1 Year Parts and Labor Warranty
- 5 Year Compressor Warranty

OPTIONAL FEATURES

- Condensate Evaporator Pan
- Side Vision End Panels
- Heated Insulated Programmable RGBWW 4-in-1 LED lights
- Heated Insulated Glass Vision End Panels
- Heated Insulated Glass With LED Lights End Panels
- Heated Insulated Glass With LED Lights Around Perimeter Adjustable From 3000K - 5000K
- Adjustable Thin Profile LED Lighting With Adjustable Dimmer 3000K - 5000K
- Vertical Thin Profile LED Lighting In Lieu Of Lighting Below Shelves
- Remote Refrigeration
- Front Decorative Panels (Remote Refrigerated Units Only, Consult Factory)
- Special Laminates
- Stainless Steel Exterior Finish
 - #4 #8
- Finished Back with Air Grill:
 - Stainless Steel Black
- Wood Veneers (Stained & Sealed)
- Wire Shelves
 - White Black Chrome
- Casters:
 - 3" 6"
- Adjustable Legs Up To 6"
- Powder Coated Interior Back Panel and Hardware
 - Black White Custom Color
- Mirrored Polished Stainless Steel Interior Ends (#8 Finish)
- Mirrored Polished Stainless Steel Perforated Interior Back Panel (#8 Finish)
- Joining Kit Hardware
- Acrylic Product Stop For Stainless Steel Shelving

CALL TOLL FREE: 800-525-3692 (609-714-2330)
FAX: 609-714-2331 www.rpiindustries.com
220 ROUTE 70, MEDFORD, NJ 08055



Conforms to UL Standard 471, and NSF Standard 7; Certified To CSA Standard C22.2 No.120

MODEL # SCAS-V-S-TC-PD

SELF - CONTAINED - Floor Drain

MODEL	L	D	H	HP	VOLT	AMP	PLUG	WT	REFRIG.
SCAS48R-V-S-TC-PD	48	32	78 1/2	1	115/208-230 4 wire	12.0	L14-20P	900	404A

SELF - CONTAINED - With Evaporator Pan

MODEL	L	D	H	HP	VOLT	AMP	PLUG	WT	REFRIG.
SCAS48R-V-S-TC-PD	48	32	78 1/2	1	115/208-230 4 wire	16.8	L14-30P	900	404A

NOTE: A minimum of 18" clearance needed above unit for air discharge for self contained units.

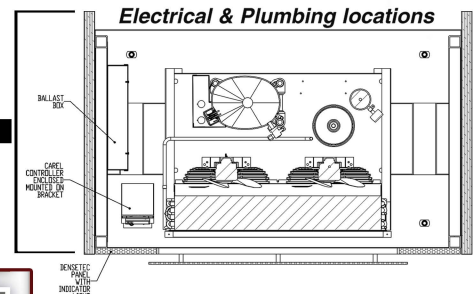
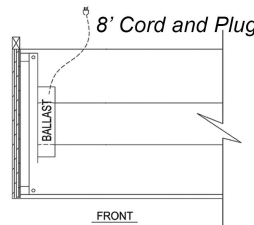
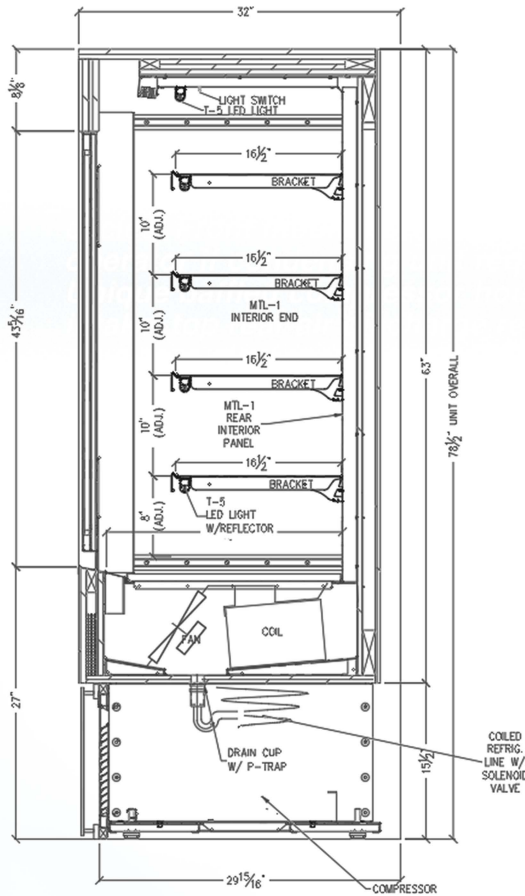
REMOTE - REFRIGERATED

MODEL	BTUH @ 20 F	VOLT	AMP	PLUG	WT	REFRIG.
SCAS48R-V-S-TC-PD-RR	7470	115	11.6	5-15P	800	Verify

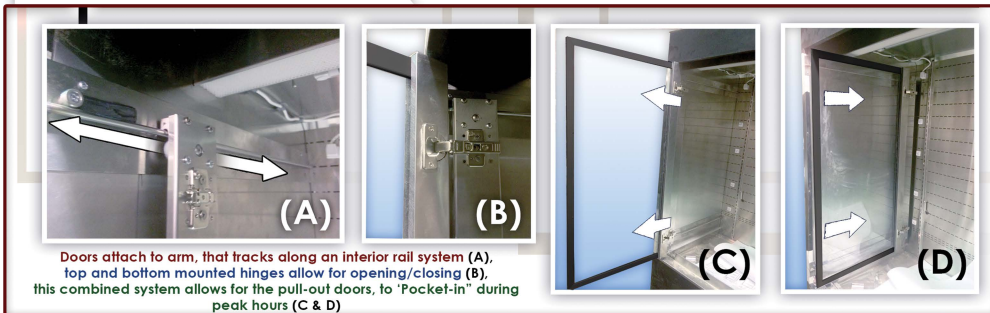
*448 refrigeration is available at no additional charge - please specify

GLYCOL

MODEL	BTUH @ 20 F	VOLT	AMP	PLUG	WT	GPM	REFRIG.
SCAS48R-V-S-TC-PD-RR-GL	7470	115	11.6	5-15P	800	2.0	GLYCOL



HOW THE DOORS WORK



RPI refrigerated merchandisers configured for sale for use in the United States meet or surpass the requirements of the DOE 2017 energy efficiency standards

1. Refrigeration System is designed so air will flow front to rear. Unobstructed air flow must be maintained to ensure unit performance and maintain warranty.
2. The SCAS-V-S-TC-PD merchandiser is designed for use in stores where ambient temperatures and humidity do not exceed 80 Degrees Fahrenheit and 60% R.H. Locate away from direct sunlight, rapid air currents and extreme temperature changes. Exposure to air currents from ceiling fans, air conditioning diffusers, ovens, etc. will disrupt the case air curtain and refrigerated zone. Refrigerated Displays are designed to maintain pre-chilled products. Adding or loading warm products above 41 Degrees Fahrenheit can affect the temperature in the entire cabinet. Any adverse field conditions stated above will void warranty.

RPI in line with its policy to continually improve its products reserves the right to change materials and specifications without notice.

CALL TOLL FREE: 800-525-3692 (609-714-2330)

FAX: 609-714-2331 www.rpiindustries.com

220 ROUTE 70, MEDFORD, NJ 08055

