

OLYMPUS II PORTE CACHEE™ AIR SCREEN

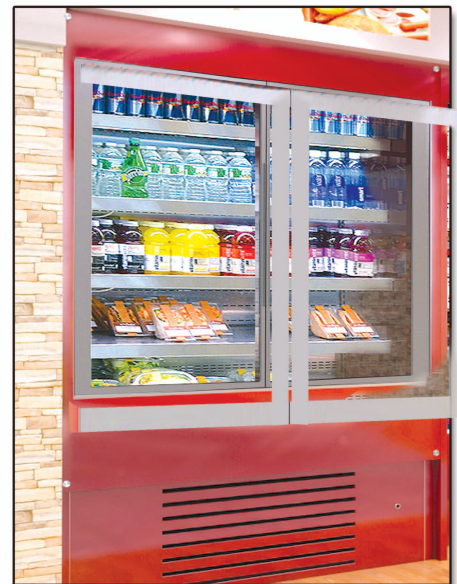
PROJECT: _____
ITEM: _____ **QUANTITY:** _____

MODEL # SCAS-II-PD

SPECIFICATIONS _____

The Olympus Porte Cachee Air Screen SCAS-II-PD Series is a grab and go style refrigerator. The self-contained refrigeration system includes digital controls allowing unit to engage in minimal defrost cycles. Unique baffled compressor housing for front air intake, top rear air discharge reducing noise levels plus zero clearance from wall installation. Unit comes standard with one set of 2 insulated sliding-hinged pocket doors 4 adjustable extra deep shelves and is available with energy efficient LED lighting underneath the shelving.

Available lengths: 48"
Available depths: 32"
Available heights: 78"



STANDARD FEATURES

- DOE 2017 Compliant
- Self-Contained Refrigeration
- Squared Top Canopy
- Metal Frame Base Construction
- Removable Front Panel & Louvered Air Grill for Easy Access to Compressor
- Standard Grade Laminate Exterior
- One Set of (2) Insulated Front Sliding-Hinged Pocket Doors
- Brushed Stainless Steel Interior Ends
- Stainless Steel Perforated Interior Back Panel
- LED Top Canopy Light
- (4) Adjustable Stainless Steel Extra Deep Shelves for Maximum Capacity, with LED Lighting
- Removable Stainless Steel Deck Pan with Hemmed Edge to Contain Spills
- Electronic Digital Temperature Control and Defrost Termination
- Red Indicator Light Alerts Operator if Condenser Requires Cleaning
- Unique Internal Baffle Design for Compressor Noise Reduction
- Front Air Intake with Top Rear Air Discharge for Zero Clearance
- Easy Slide-Out Condensing Unit
- 8' Cord and Plug
- ETL Listed in Accordance with UL 471 and NSF 7 Standards
- Conforms to NSF STD 7 Type II Refrigeration
- Environmentally Safe Refrigerant
- 1 Year Parts and Labor Warranty
- Floor drain required
- 5 Year Compressor Warranty

OPTIONAL FEATURES

- Condensate Evaporator Pan
- Remote Refrigeration
- Front Decorative Panels (Remote Refrigerated Units Only, Consult Factory)
- Special Laminates / Acrylic Exterior Finishes (Consult Factory)
- Stainless Steel Exterior Finish
 - #4 #8
- Wood Veneers (Stained & Sealed)
- Miscellaneous Trim
- Top Mount Proximity Motion Sensor
- Wire Shelves
 - White Black Chrome
- Tempered 3/8" Glass Shelving
- U Shape Front Shelf Merchandiser
- Casters (Increases Height by 6")
- Adjustable Legs (Consult Factory for Sizes)
- Powder Coated Interior Back Panel and Hardware
 - Black White Custom Color
- Mirrored Polished Stainless Steel Interior Ends (#8 Finish)
- Mirrored Polished Stainless Steel Perforated Interior Back Panel (#8 Finish)
- Finished Back with Air Grill:
 - Stainless Steel Black
- Front Panel with Louvered Air Grill:
 - Stainless Steel Black
- Solid Insulated or See-Through Rear Sliding Doors at 29 3/4" Depth
- Insulated Glass Vision End Panels
- Fold Down Stainless Steel V-Ribbed Tray Slide
- Fold Down Corian® Tray Slide
- Stationary Corian® Tray Ledge
- Tie-In Strips for Interconnection of Units



Conforms to UL Standard 471, and NSF Standard 7; Certified To CSA Standard C22.2 No.120



CALL TOLL FREE: 800-525-3692 (609-714-2330)

FAX: 609-714-2331 www.rpiindustries.com

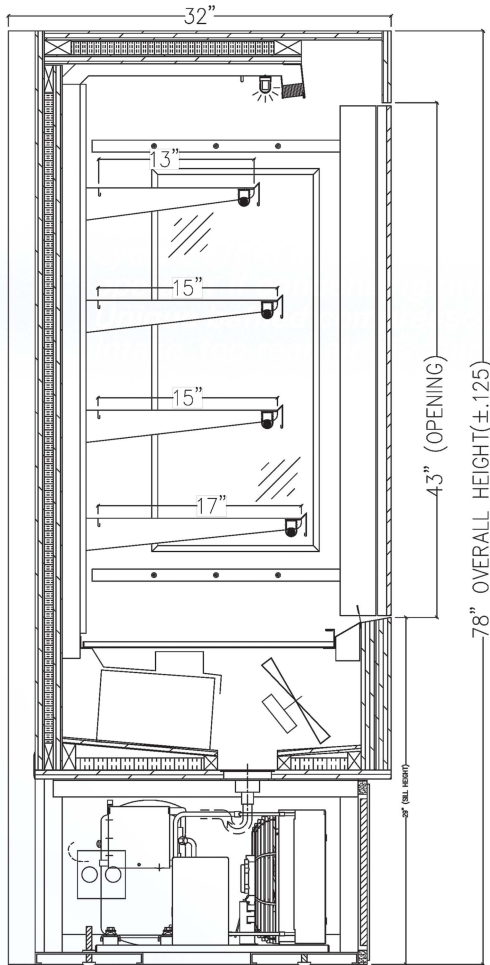
220 ROUTE 70, MEDFORD, NJ 08055

RPI INDUSTRIES, INC. v5_30_23

OLYMPUS II PORTE CACHEE™ AIR SCREEN

PROJECT: _____
TOLL FREE: 800-525-3692

MODEL # SCAS-II-PD



SELF - CONTAINED - Floor Drain

MODEL	L	D	H	HP	VOLT	AMP	PLUG	WT	REFRIG.
SCAS48R-II-PD	48	32	78	1	115/208-230 4 wire	11.0	L14-20P	900	404A

SELF - CONTAINED - With Evaporator Pan

MODEL	L	D	H	HP	VOLT	AMP	PLUG	WT	REFRIG.
SCAS48R-II-PD	48	32	78	1	115/208-230 4 wire	15.8	L14-30P	900	404A

REMOTE - REFRIGERATED

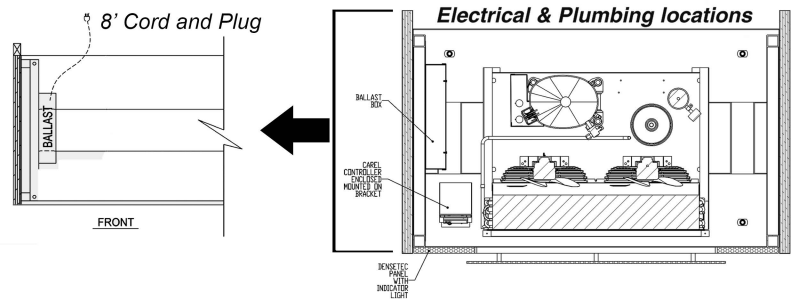
MODEL	BTUH @ 20 °F EVAP 90 °F AMB	VOLT	AMP	PLUG	WT	REFRIG.
SCAS48R-II-PD-RR	7470	115	10.6	5-15P	800	Verify

NOTE: A minimum of 18" clearance needed above unit for air discharge for self contained units.

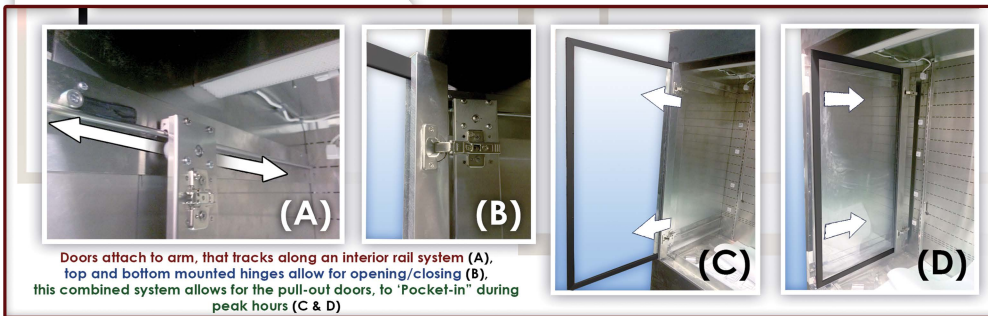
* 448a refrigeration available at no additional cost - please specify

GLYCOL

MODEL	BTUH @ 20 °F EVAP 90 °F AMB	VOLT	AMP	PLUG	WT	GPM	REFRIG.
SCAS48R-II-PD-RR-GL	7470	115	10.6	5-15P	800	2.0	GLYCOL



HOW THE DOORS WORK



RPI refrigerated merchandisers configured for sale for use in the United States meet or surpass the requirements of the DOE 2017 energy efficiency standards

1. Refrigeration System is designed so air will flow front to rear. Unobstructed air flow must be maintained to ensure unit performance and maintain warranty.
2. The SCAS-PD merchandiser is designed for use in stores where ambient temperatures and humidity do not exceed 80 Degrees Fahrenheit and 60% R.H. Locate away from direct sunlight, rapid air currents and extreme temperature changes. Exposure to air currents from ceiling fans, air conditioning diffusers, ovens, etc. will disrupt the case air curtain and refrigerated zone. Refrigerated Displays are designed to maintain pre-chilled products. Adding or loading warm products above 41 Degrees Fahrenheit can affect the temperature in the entire cabinet. Any adverse field conditions stated above will void warranty.

RPI in line with its policy to continually improve its products reserves the right to change materials and specifications without notice.

CALL TOLL FREE: 800-525-3692 (609-714-2330)

FAX: 609-714-2331 www.rpiindustries.com

220 ROUTE 70, MEDFORD, NJ 08055

RPI INDUSTRIES, INC. v5_30_23