

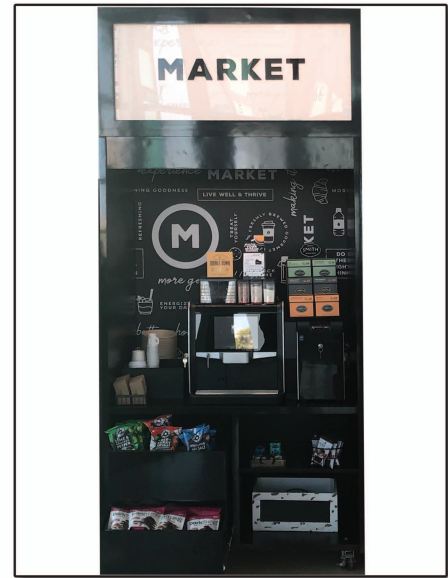
## MODEL # SCAS48-V-POS-ME

### SPECIFICATIONS

The Olympus V Market Express Ambient POS Series is a grab and go style dry display self-checkout, built and designed for the extended micro-market series line-up displays. Units are available with wood veneer exteriors, LED lighting, and the flexibility for you to create the line-up footprint of your choosing!

**NOTE:** If unit is lined-up with Flexeserve Heated, overall depth will increase to 34"

- Available lengths:  48"  
 Available depths:  33 5/16"  
 Available heights:  78 1/2"



\*Shown with optional header panel with graphics.

### STANDARD FEATURES

- Squared Top Canopy
- Solid Contoured End Panels
- Standard Grade Laminate Exterior, Interior & Deck
- Top Bracket designed to accommodate optional header panel
- LED Top Canopy Light
- Black Laminate interior and deck
- (2) Pull Out Merchandising Racks
- (1) Fixed Shelf
- 8' Cord and Plug
- 1 Year Parts and Labor Warranty
- 4000K LED Lighting

### OPTIONAL FEATURES MOST POPULAR

- 24" High Header Panel (Graphics by others)
  - 16" High Lightbox Insert Header
  - Backlit top header
  - Laminate Header
- Stainless Steel Exterior Finish
  - #4
  - #8
- Special Laminates
- Mirrored Polished Stainless Steel Interior Ends (#8 Finish) (Upper Section Only)
- Interior Rear Panel Graphics
- Wood Veneers (Stained & Sealed) Exterior
- Squared End Profile (32" Deep)

### ADDITIONAL OPTIONAL FEATURES

- Vision End Panels
- Casters
  - 3"
  - 6"
- Joining Hardware
- Finished Back
- Adjustable Legs Up To 6"



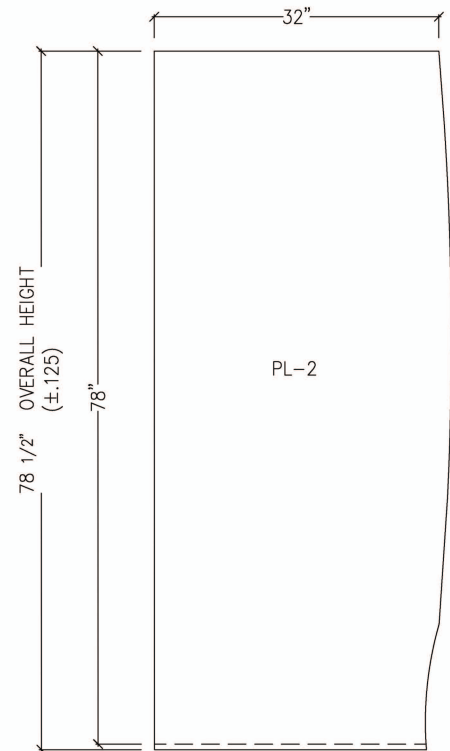
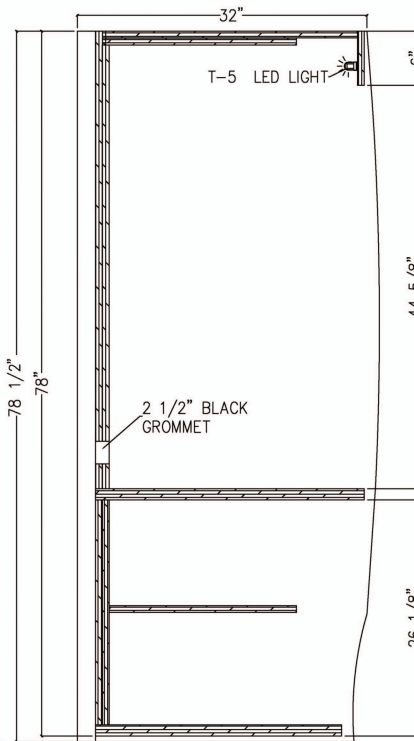
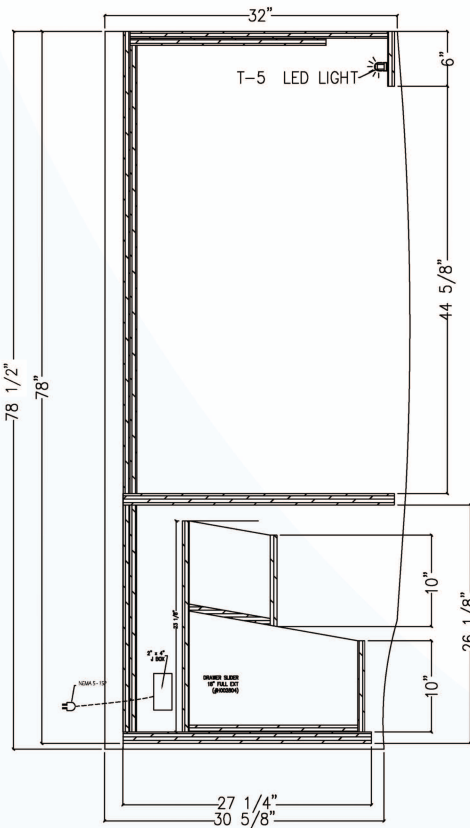
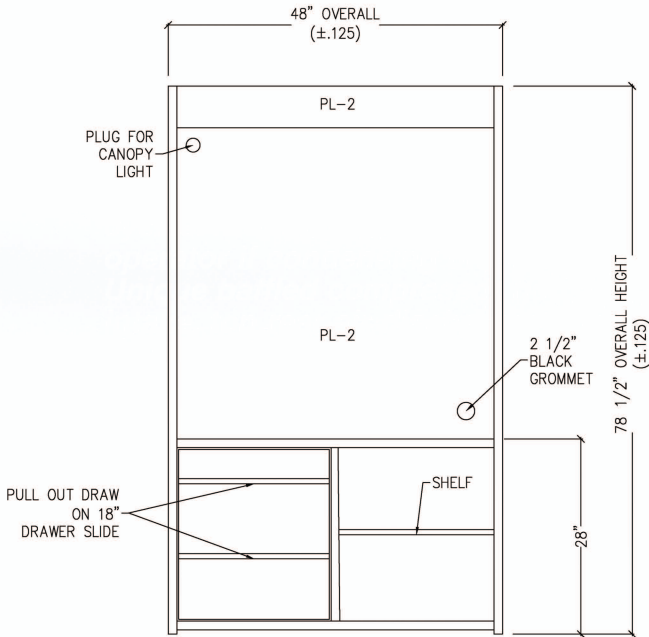
## MODEL # SCAS48-V-POS-ME

### AMBIENT

MODEL	L	D	H	VOLT	AMP	PLUG	WT
SCAS48-V-POS-ME	48	32	78 1/2	115	1.3	5-15P	800

**NOTE:** A minimum of 24" unobstructed free air space above unit / header panel if in line with a self contained refrigerated Market Express case.

\* 448a refrigeration available at no additional cost - please specify



Conforms to UL Standard 471, and NSF Standard 7; Certified To CSA Standard C22.2 No.120

RPI in line with its policy to continually improve its products reserves the right to change materials and specifications without notice.

CALL TOLL FREE: 800-525-3692 (609-714-2330)

FAX: 609-714-2331 [www.rpiindustries.com](http://www.rpiindustries.com)

220 ROUTE 70, MEDFORD, NJ 08055