

OLYMPUS V SQUARED AIR SCREEN

PROJECT: _____

ITEM: _____ QUANTITY: _____

MODEL # SCAS-V-S

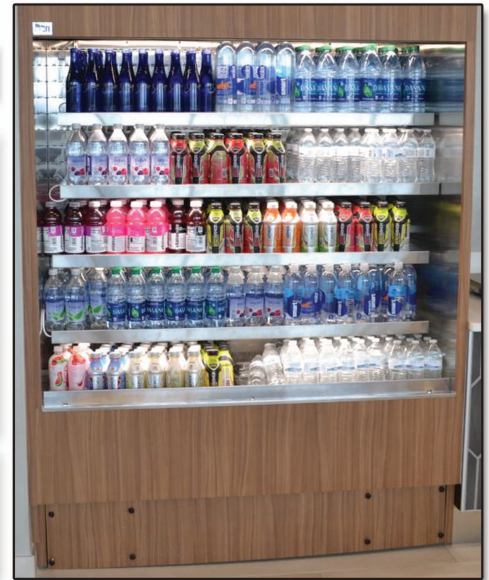
SPECIFICATIONS

The Olympus V Squared Air Screen SCAS-V-S Series is a grab and go style refrigerator with squared end panels. The self-contained refrigeration system includes digital controls allowing unit to engage in minimal defrost cycles. Unique baffled compressor housing for front air intake, top rear air discharge reducing noise levels, plus zero clearance from wall installation. Unit comes standard with 4 adjustable stainless shelves and is available with energy efficient LED lighting underneath the shelving.

Available lengths: 36" 48" 60" 72"

Available depths: 32"

Available heights: 78 1/2"



Remote Case Shown, No Grill.

STANDARD FEATURES

- Self-Contained Refrigeration
- Squared Top Canopy
- Solid Contoured End Panels
- Smart Controller Electronic Digital Temperature Control and Defrost Termination
- Metal Frame Base Construction with Lift-Out Black Louvered Air Grill For Easy Access To Compressor
- Standard Grade Laminate Exterior
- Brushed Stainless Steel Interior Ends
- Stainless Steel Perforated Interior Back Panel
- 4000K LED Top Canopy Light
- 2 Positions Downslant Bracket For Tiltable Shelves
- (4) Adjustable Stainless Steel Shelves for Maximum Capacity, with 4000K LED Lighting
- Removable Stainless Steel Deck Pan with Hemmed Edge to Contain Spills
- Red Indicator Light Alerts Operator if Condenser Requires Cleaning
- Unique Internal Baffle Design for Compressor Noise Reduction
- Front Air Intake with Top Rear Air Discharge for Zero Clearance
- Easy Slide-Out Condensing Unit For Service
- 8' Cord and Plug
- ETL Listed in Accordance with UL 471 and NSF 7 Type II Refrigeration
- Environmentally Safe Refrigerant
- Built-in Condensate Evaporator System
- Energy Saving Night Curtain
- 1 Year Parts and Labor Warranty
- 5 Year Compressor Warranty
- Black Laminate Back Finish

OPTIONAL FEATURES

- Remote Refrigeration
- Smart Door – motorized door activated by food simulator which automatically closes when product registers above 40°F
- Smart Door with Battery Back-up
- Mirrored Polished Stainless Steel Interior Ends (#8)
- Mirrored Polished Stainless Steel Perforated Interior Back Panel (#8)
- Powder Coated Interior Back Panel and Hardware
 - Black White Custom Color
- Side Vision End Panels
- Insulated Glass Vision End Panels
- Tempered 3/8" Glass Shelving
- Acrylic Product Stop for Stainless Steel Shelving
- Stainless Steel Exterior Finish
 - #4 Brushed #8 Mirrored
- Special Laminate Exterior Finish
- Wood Veneer Exterior Finish (Stained & Sealed)
- Front Decorative Panels (remote units only, consult factory)
- Finished Back with Air Grill
 - Stainless Steel Black
- Solid Insulated or See-Through Rear Doors
 - 36" Hinged Door 48", 60", 72" Sliding Door
- Joining Kit Hardware
- Roll Down Locking Security Cover
- Adjustable legs up to 6"
 - 3" 6"
- Casters
- 3000k LED Lights

**Some options may change electrical requirements*

CALL TOLL FREE: 800-525-3692 (609-714-2330)

FAX: 609-714-2331 www.rpiindustries.com

220 ROUTE 70, MEDFORD, NJ 08055



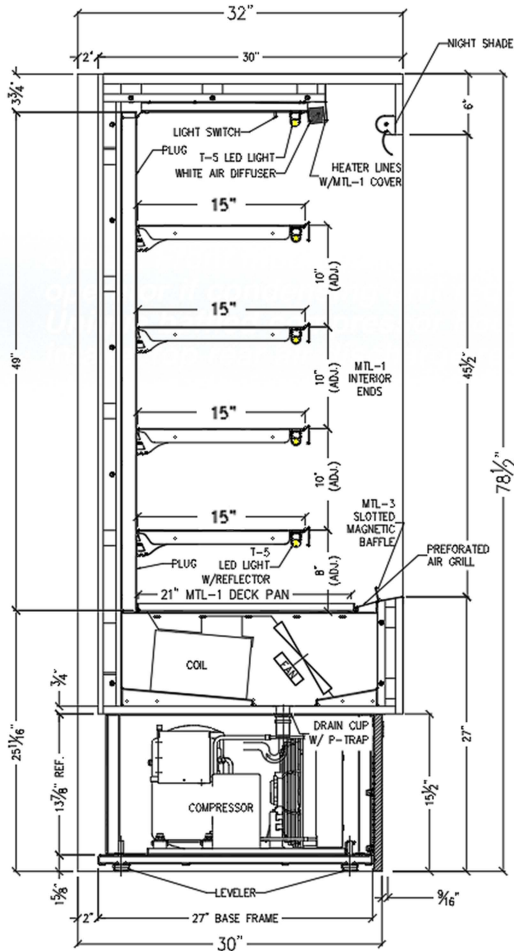
Conforms to UL Standard 471,
and NSF Standard 7; Certified
To CSA Standard C22.2 No. 120

Conforms to NSF STD 7
TYPE II

DOE 2017
Energy Efficiency
Compliant

RPI INDUSTRIES, INC. v2_26_24

MODEL # SCAS-V-S



SELF - CONTAINED - Floor Drain

MODEL	L	D	H	HP	VOLT	AMP	PLUG	WT	REFRIG
SCAS36R-V-S	36	32	78 1/2	1/2	115	12	5-20P	675	134A
SCAS48R-V-S	48	32	78 1/2	1	115/208-230 4 wire	11.24	L14-20P	900	404A
SCAS60R-V-S	60	32	78 1/2	1 1/4	115/208-230 4 wire	12.24	L14-20P	1020	404A
SCAS72R-V-S	72	32	78 1/2	1 1/4	115/208-230 4 wire	12.74	L14-20P	1150	404A

SELF - CONTAINED With Evaporator Pan

MODEL	L	D	H	HP	VOLT	AMP	PLUG	WT	REFRIG
SCAS36R-V-S	36	32	78 1/2	1/2	115	14.6	5-20P*	675	134A
SCAS48R-V-S	48	32	78 1/2	1	115/208-230 4 wire	16	L14-20P	900	404A
SCAS60R-V-S	60	32	78 1/2	1 1/4	115/208-230 4 wire	17.1	L14-30P	1020	404A
SCAS72R-V-S	72	32	78 1/2	1 1/4	115/208-230 4 wire	17.54	L14-30P	1150	404A

* Adding evaporator pan option to 36" unit requires a separate 115V circuit (pan shipped loose).
NOTE A minimum of 24" unobstructed free air space above unit required for proper ventilation.
 * 448a refrigeration available at no additional cost - please specify

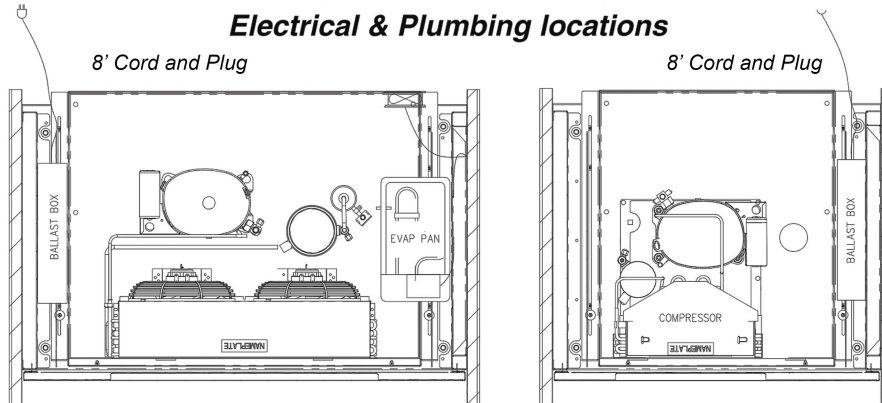
REMOTE - REFRIGERATED With Evaporator Pan

MODEL	BTUH @ 20°F	VOLT	AMP	PLUG	WT	REFRIG.
SCAS36R-V-S-RR	4140	115	10.31	5-20P	625	Verify
SCAS48R-V-S-RR	7470	115	10.81	5-20P	800	Verify
SCAS60R-V-S-RR	9960	115	10.81	5-20P	920	Verify
SCAS72R-V-S-RR	9960	115	11.21	5-20P	1050	Verify

GLYCOL With Evaporator Pan

MODEL	BTUH @ 20°F	VOLT	AMP	PLUG	WT	GPM	REFRIG.
SCAS36R-V-S-RR-GL	4140	115	10.31	5-20P	625	1.0	GLYCOL
SCAS48R-V-S-RR-GL	7470	115	10.81	5-20P	800	2.0	GLYCOL
SCAS60R-V-S-RR-GL	9960	115	10.81	5-20P	920	2.5	GLYCOL
SCAS72R-V-S-RR-GL	9960	115	11.21	5-20P	1050	2.5	GLYCOL

Electrical & Plumbing locations



48"-72" Units
 Ballast on left

36" Units
 Ballast on right



Conforms to UL Standard 471, and NSF Standard 7; Certified To CSA Standard C22.2 No.120

Conforms to NSF STD 7
TYPE II

DOE 2017
 Energy Efficiency
 Compliant

RPI refrigerated merchandisers configured for sale for use in the United States meet or surpass the requirements of the DOE 2017 energy efficiency standards

1. Refrigeration System is designed so air will flow front to rear. Unobstructed air flow must be maintained to ensure unit performance and maintain warranty.
2. The SCAS-V-S merchandiser is designed for use in stores where ambient temperatures and humidity do not exceed 80 Degrees Fahrenheit and 60% R.H. Locate away from direct sunlight, rapid air currents and extreme temperature changes. Exposure to air currents from ceiling fans, air conditioning diffusers, ovens, etc. will disrupt the case air curtain and refrigerated zone. Refrigerated Displays are designed to maintain pre-chilled products. Adding or loading warm products above 41 Degrees Fahrenheit can affect the temperature in the entire cabinet. Any adverse field conditions stated above will void warranty.

RPI in line with its policy to continually improve its products reserves the right to change materials and specifications without notice.

CALL TOLL FREE: 800-525-3692 (609-714-2330)

FAX: 609-714-2331 www.rpiindustries.com

220 ROUTE 70, MEDFORD, NJ 08055

