

MODEL # SCASD-V-ME

SPECIFICATIONS

The Olympus V Market Express Ambient Merchandising Series is a grab and go style dry display, built and designed for the extended micro-market series line-up displays. Units are available with wood veneer exteriors, LED lighting, and the flexibility for you to create the line-up footprint of your choosing!

NOTE: If unit is lined-up with Flexeserve Heated, overall depth will increase to 34"

Available lengths: 24" 36" 48"

Available depths: 33 5/16"

Available heights: 78 1/2"



* (2) 24" units shown with header panel option

STANDARD FEATURES

- Squared Top Canopy
- Solid Contoured End Panels
- Standard Grade Laminate Exterior, Interior & Deck
- Top Bracket designed to accommodate optional header panel
- LED Top Canopy Light
- Black Laminate interior and deck
- (4) Slanted fixed laminated shelves with LED lighting
- 8' Cord and Plug
- 1 Year Parts and Labor Warranty
- 4000K LED Lighting

OPTIONAL FEATURES MOST POPULAR

- 24" High Header Panel (Graphics by others)
 - 16" High Lightbox Insert Header Backlit top header
 - Laminate top header
- Stainless Steel Exterior Finish
 - #4 #8
- Special Laminates
- Mirrored Polished Stainless Steel Interior Ends (#8 Finish)
- Vertical Thin Profile LED Lighting In Lieu Of Lighting Below Shelves
- Wood Veneers (Stained & Sealed) Exterior
- Squared End Profile (32" deep)

ADDITIONAL OPTIONAL FEATURES

- Casters
 - 8" 6"
- Finished Back
- Adjustable Legs Up To 6"
- Joining Hardware

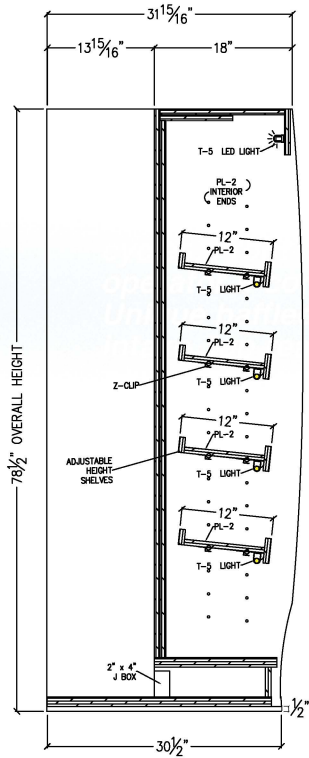


CALL TOLL FREE: 800-525-3692 (609-714-2330)

FAX: 609-714-2331 www.rpiindustries.com

220 ROUTE 70, MEDFORD, NJ 08055

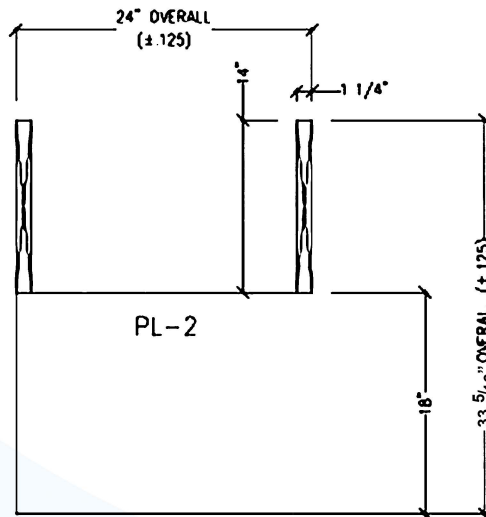
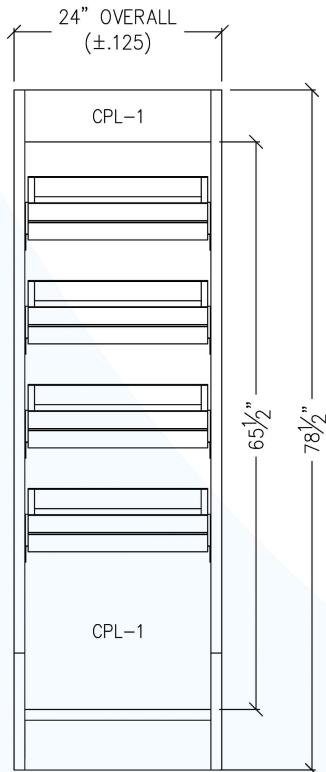
MODEL # SCASD-V-ME



AMBIENT

MODEL	L	D	H	VOLT	AMP	PLUG	WT
SCAS24D-V-ME	24	33 5/16	78 1/2	115	1.3	5-15P	350
SCAS36D-V-ME	36	33 5/16	78 1/2	115	1.3	5-15P	625
SCAS48D-V-ME	48	78 1/2	115	1.3	5-15P	800	

NOTE: A minimum of 24" unobstructed free space above unit / header panel if in line with a self contained refrigerated Market Express case.



RPI in line with its policy to continually improve its products reserves the right to change materials and specifications without notice.



Conforms to UL Standard 471,
 and NSF Standard 7; Certified
 To CSA Standard C22.2 No. 120

CALL TOLL FREE: 800-525-3692 (609-714-2330)

FAX: 609-714-2331 www.rpiindustries.com

220 ROUTE 70, MEDFORD, NJ 08055

RPI INDUSTRIES, INC. v11_29_22