

MODEL # SCRFCR-ST DRY TOP

SPECIFICATIONS

The SOHO SCRFCR-ST Series is a three section display case consisting of a refrigerated self-service lower section, a refrigerated operator serve mid section and an operator serve non-refrigerated upper section. (2) levels glass shelf in a UV bonded enclosure The lower section has a hemmed edge removable deck pan to contain spills.

Available lengths: 36" 48" 60"

Available depths: 33"

Available heights: 63 3/4"



UNIT SHOWN WITH OPTIONAL
STAINLESS STEEL EXTERIOR FINISH

STANDARD FEATURES

- Self-Contained Refrigeration
- Standard Grade Laminate Exterior
- Brushed Stainless Steel Interior Ends
- 3" Casters
- See-Through Mirrored Rear Sliding Doors (Mid Section)
- Energy Efficient LED Lighting
- Intermediate Tempered Glass Shelf (Mid Section)
- Removable Stainless Steel Deck Pan with Hemmed Edge to Contain Spills
- Electronic Digital Control and Defrost Termination
- Red Indicator Light Alerts Operator if Condenser Requires Cleaning
- Rear Fold Down Wrap Board
- Digital Temperature Display
- 8' Cord and Plug
- ETL Listed in Accordance with UL 471 and NSF 7 Standards
- Environmentally Safe Refrigerant
- Self Evaporating Condensate Unit
- 1 Year Parts and Labor Warranty
- 5 Year Compressor Warranty

OPTIONAL FEATURES

- Remote Refrigeration
- Stainless Steel Exterior Finish
 - #4 #6 #8
- Special Laminates
- Wood Veneers (Stained & Sealed)
- Adjustable Legs
 - 4" 6"
- Mirrored Polished Stainless Steel Interior Ends (#8 Finish)
- Removable Locking Security Panels (Lower Section)
- Rear Door Locks
- Thermometer
- Stainless Steel Step Shams In Bottom Grab & Go Section

CALL TOLL FREE: 800-525-3692 (609-714-2330)

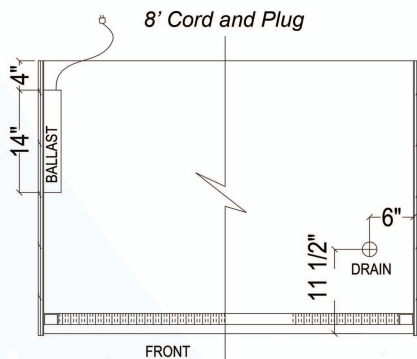
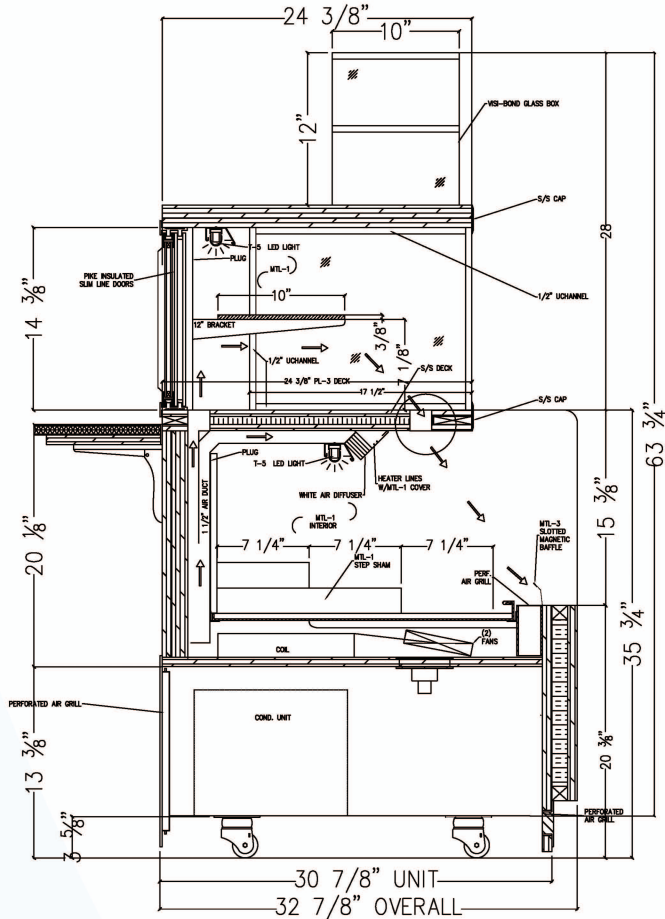
FAX: 609-714-2331 www.rpiindustries.com

220 ROUTE 70, MEDFORD, NJ 08055

RPI INDUSTRIES, INC. v5_30_23



MODEL # SCRFCR-ST DRY TOP



Electrical & Plumbing locations

SELF - CONTAINED

MODEL	L	D	H	HP	VOLT	AMP	PLUG	WT	REFRIG.
SCRFC3665R-ST 36	36	33	63 3/4	1/2	115	11.75	5-20P	800	134A
SCRFC4865R-ST 48	33	33	63 3/4	1/2	115	15.89	5-20P	950	404A
SCRFC6065R-ST 60	33	33	63 3/4	3/4	208/230	16.62	L14-30	1100	404A

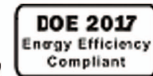
* 448a refrigeration available at no additional cost - please specify

REMOTE - REFRIGERATED

MODEL	BTU @ 20° F	VOLT	AMP	PLUG	WT	REFRIG.
SCRFC3665R-ST-RR 36	3910	115	2.00	5-15P	750	Verify
SCRFC4865R-ST-RR 48	3910	115	2.06	5-15P		Verify
SCRFC6065R-ST-RR 60	6950	115	2.20	5-15P		Verify



Conforms to UL Standard 471,
and NSF Standard 7; Certified
To CSA Standard C22.2 No.120



RPI refrigerated merchandisers configured for sale for use in the United States meet or surpass the requirements of the DOE 2017 energy efficiency standards

1. All Self-Contained, Remote and Glycol Units must be run to a floor drain at time of installation.
2. Refrigeration System is designed so air will flow front to rear. Unobstructed air flow must be maintained to ensure unit performance and maintain warranty.
3. The SCRFCR-ST merchandiser is designed for use in stores where ambient temperatures and humidity do not exceed 75 Degrees Fahrenheit and 55% R.H. Locate away from direct sunlight, rapid air currents and extreme temperature changes. Exposure to air currents from ceiling fans, air conditioning diffusers, ovens, etc. will disrupt the case air curtain and refrigerated zone. Refrigerated Displays are designed to maintain pre-chilled products. Adding or loading warm products above 41 Degrees Fahrenheit can affect the temperature in the entire cabinet. Any adverse field conditions stated above will void warranty.

RPI in line with its policy to continually improve its products reserves the right to change materials and specifications without notice.

CALL TOLL FREE: 800-525-3692 (609-714-2330)

FAX: 609-714-2331 www.rpiindustries.com

220 ROUTE 70, MEDFORD, NJ 08055