

## MODEL # SCRFCTT REFRIGERATED TOP

### SPECIFICATIONS

The Tribeca SCRFCTT Series is a three section display case consisting of a refrigerated self-service lower section, a refrigerated operator serve mid section and an operator serve split frosted deck and ambient display shelf in a UV bonded glass enclosure. The lower section has a hemmed edge removable deck pan to contain spills.



**UNIT SHOWN WITH OPTIONAL  
STAINLESS STEEL EXTERIOR FINISH**

Available lengths:  36"  48"  60"

Available depths:  33"

Available heights:  63 3/4"

### STANDARD FEATURES

- Self-Contained Refrigeration
- Standard Grade Laminate Exterior
- Brushed Stainless Steel Interior Ends
- 3" Casters
- Removable Plexi Glass Sliding Doors (Upper Section)
- Refrigerated Cold Plate Deck - Bottom Glass Box Section
- See-Through Mirrored Rear Sliding Doors (Mid Section)
- Energy Efficient LED Lighting
- Intermediate Tempered Glass Shelf (Mid Section)
- Removable Stainless Steel Deck Pan with Hemmed Edge to Contain Spills
- Electronic Digital Control and Defrost Termination
- Red Indicator Light Alerts Operator if Condenser Requires Cleaning
- Rear Fold Down Wrap Board
- Digital Temperature Display
- 8' Cord and Plug
- ETL Listed in Accordance with UL 471 and NSF 7 Standards
- Environmentally Safe Refrigerant
- Self Evaporating Condensate Unit
- 1 Year Parts and Labor Warranty
- 5 Year Compressor Warranty

### OPTIONAL FEATURES

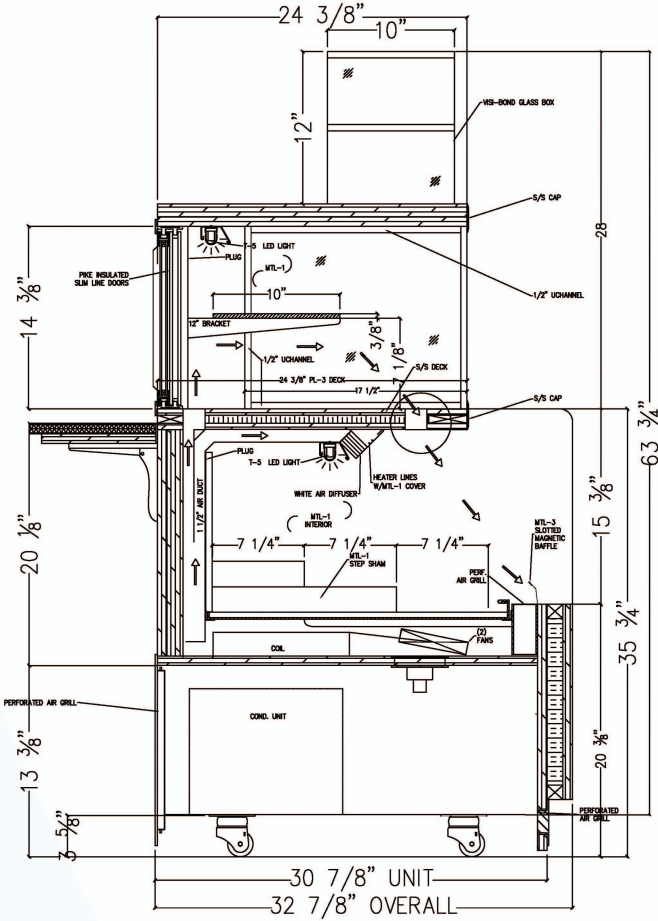
- Remote Refrigeration
- Stainless Steel Exterior Finish
  - #4  #6  #8
- Special Laminates
- Wood Veneers (Stained & Sealed)
- Adjustable Legs
  - 4"  6"
- Mirrored Polished Stainless Steel Interior Ends (#8 Finish)
- Removable Locking Security Panels (Lower Section)
- Rear Door Locks
- Thermometer
- Stainless Steel Step Shams In Bottom Grab & Go Section

CALL TOLL FREE: 800-525-3692 (609-714-2330)

FAX: 609-714-2331 [www.rpiindustries.com](http://www.rpiindustries.com)

220 ROUTE 70, MEDFORD, NJ 08055

## MODEL # SCRFCR-TT REFRIGERATED TOP



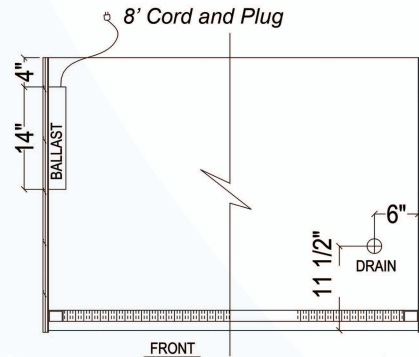
### SELF - CONTAINED

MODEL	L	D	H	HP	VOLT	AMP	PLUG	WT	REFRIG.
SCRFC3665R-TT	36	33	63 3/4	1/2	115	15.81	5-20P	800	404A
SCRFC4865R-TT	48	33	63 3/4	1/2	115	15.89	5-20P	950	404A
SCRFC6065R-TT	60	33	63 3/4	3/4	208/230	16.62	L14-30	1100	404A

\* 448a refrigeration available at no additional cost - please specify

### REMOTE - REFRIGERATED

MODEL	BTU @ 20° F	VOLT	AMP	PLUG	WT	REFRIG.
SCRFC3665R-TT-RR	36	3910	115	2.00	5-15P	750 Verify
SCRFC4865R-TT-RR	48	3910	115	2.06	5-15P	Verify
SCRFC6065R-TT-RR	60	6950	115	2.12	5-15P	Verify



### Electrical & Plumbing locations

1. All Self-Contained, Remote and Glycol Units must be run to a floor drain at time of installation.
2. Refrigeration System is designed so air will flow front to rear. Unobstructed air flow must be maintained to ensure unit performance and maintain warranty.
3. The SCRRCR-TT merchandiser is designed for use in stores where ambient temperatures and humidity do not exceed 75 Degrees Fahrenheit and 55% R.H. Locate away from direct sunlight, rapid air currents and extreme temperature changes. Exposure to air currents from ceiling fans, air conditioning diffusers, ovens, etc. will disrupt the case air curtain and refrigerated zone. Refrigerated Displays are designed to maintain pre-chilled products. Adding or loading warm products above 41 Degrees Fahrenheit can affect the temperature in the entire cabinet. Any adverse field conditions stated above will void warranty.

RPI in line with its policy to continually improve its products reserves the right to change materials and specifications without notice.



Conforms to UL Standard 471, and NSF Standard 7; Certified To CSA Standard C22.2 No. 120



RPI refrigerated merchandisers configured for sale for use in the United States meet or surpass the requirements of the DOE 2017 energy efficiency standards

CALL TOLL FREE: 800-525-3692 (609-714-2330)

FAX: 609-714-2331 [www.rpiindustries.com](http://www.rpiindustries.com)

220 ROUTE 70, MEDFORD, NJ 08055

**RPI INDUSTRIES, INC.** v5\_30\_23