

VIENNA REMOTE SALAT DUO SWITCH

PROJECT: _____
ITEM: _____ QUANTITY: _____

MODEL # VIAP-RR-SALAT DUO SWITCH

SPECIFICATIONS

The Vienna Salat Duo Switch is a two-sided drop-in salad bar display which offers dual temperature settings for hot and cold product. Tempered glass display, with lift-up glass doors on each side, maintains case temperature and product freshness but allows for easy self-service application. Flip up doors are lockable in 3 positions: for NSF serving as well as operator cleaning and loading. This dual sided island display has the ability for flat or slanted presentation. Unit can also be provided with stainless base and legs for freestanding display.

Available lengths: ☐ 55 3/4" ☐ 81 1/4"

Available depths: ☐ 54 1/8"

Available heights: ☐ 31 7/8"



STANDARD FEATURES

- Remote Refrigeration
- 304 Stainless Steel Exterior & Interior
- Adjustable Deck Pan to Convert to Slanted Display
- Easy Removable Deck Pans for Cleaning
- Tempered Glass With Flip Up Doors
- Gas Spring Door Lifts in 3 Lockable Positions
- Mirrored perforated air tower
- Mirrored interior center walls
- LED Top Canopy Lights
- Hot plates on one side of display
- Warming lights on one side of display
- Programmable Digital Refrigeration Controllers
- Forced Air Cooling System
- Lift-Up Evaporators
- ETL Listed in Accordance with UL 471 and NSF 7 Standards
- Environmentally Safe Refrigerant
- Floor Drain Required

OPTIONAL FEATURES

- ☐ Self-Contained Refrigeration
- ☐ Stainless Steel Slide-In Base
- ☐ Stainless Steel PRO style Freestanding Base
- ☐ 6" Stainless Legs
- ☐ Integrations Modular Counter (Consult Factory)
- ☐ Adapter Bars for Standard Pans (Pans Not Included)

| MODEL | L | D | H | PANS | BTU | VOLT | AMP | PLUG | WT | REFRIG. | CUT-OUT SIZE |
|-------------------------------|--------|--------|--------|------|-----------|--------------------------|----------|-------------|------|---------|--------------|
| VIAP4-0-R-RR-SALAT DUO SWITCH | 55 3/4 | 54 1/8 | 31 7/8 | 8 | (2x) 2048 | (2x) 115/208-230v 4-wire | (2x)13.4 | (2x)L14-20P | 1148 | 134A | 54 1/2 x 53 |
| VIAP6-0-R-RR-SALAT DUO SWITCH | 81 1/4 | 54 1/8 | 31 7/8 | 12 | (2x) 2816 | (2x) 115/208-230v 4-wire | (2x)17.4 | (2x)L14-20P | 1496 | 134A | 80 1/4 x 53 |

*BTU/h @ 14°F evap

CALL TOLL FREE: 800-525-3692 (609-714-2330)

FAX: 609-714-2331 www.rpiindustries.com

220 ROUTE 70, MEDFORD, NJ 08055



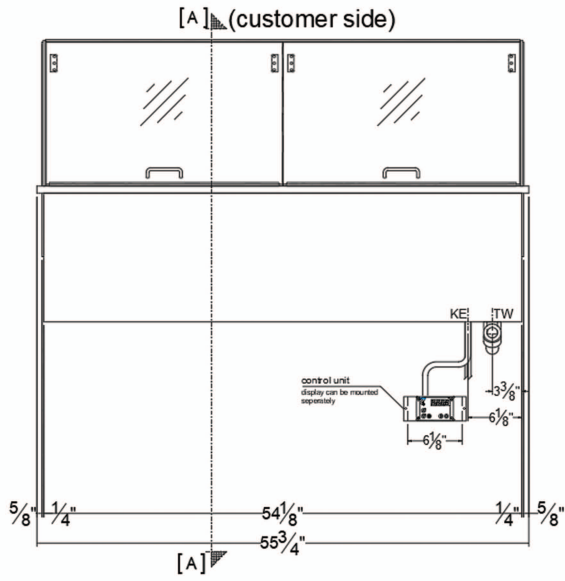
Conforms to UL Standard 471, and NSF Standard 7; Certified To CSA Standard C22.2 No.120

RPI INDUSTRIES, INC. v5_24_23

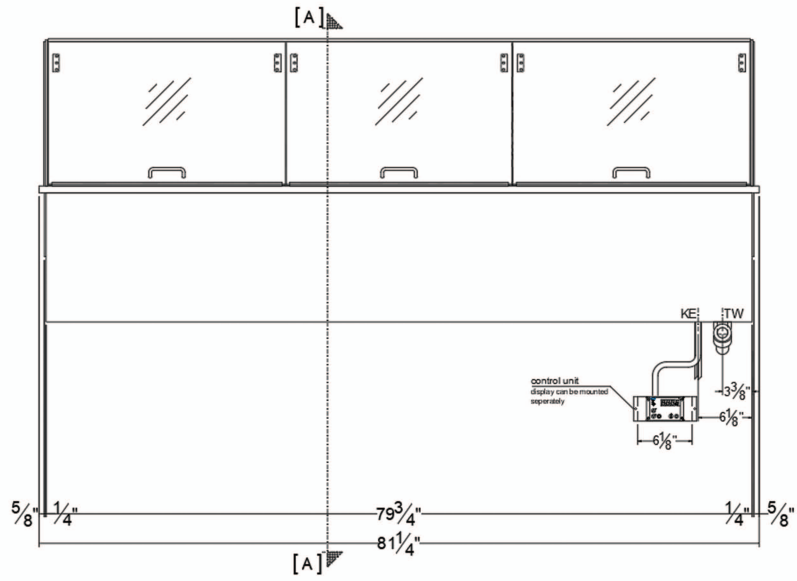
VIENNA REMOTE SALAT DUO SWITCH

PROJECT: _____
TOLL FREE: 800-525-3692

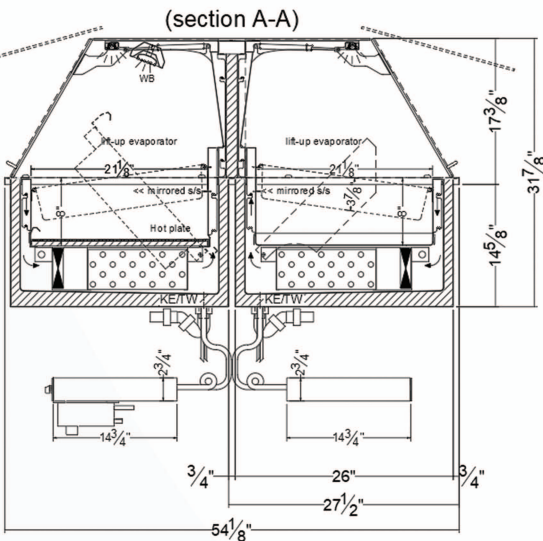
MODEL # VIAP-RR-SALAT DUO SWITCH



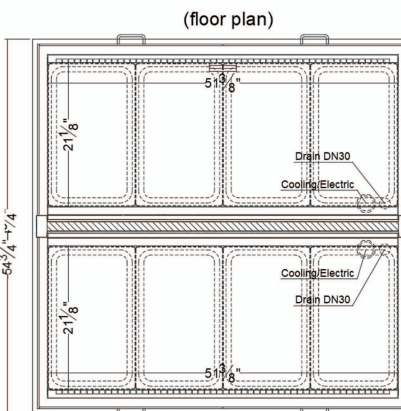
VIAP4



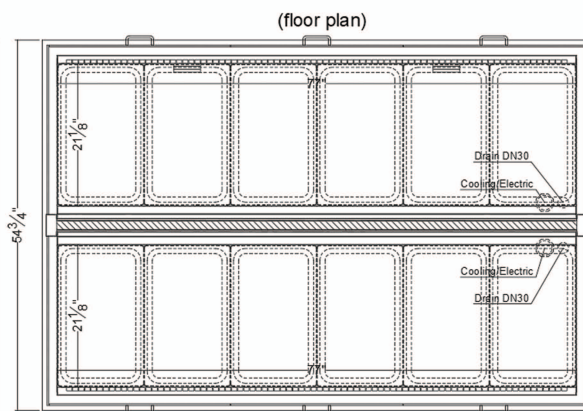
VIAP6



VIAP4 - VIAP6



VIAP4



VIAP6

Electrical & Plumbing locations

1 1/8" HOLE REQUIRED FOR COOLING AND DRAINAGE LINES

* 448a refrigeration available at no additional cost - please specify

1. Front glass is lockable in 3 positions with position 1 being for NSF application. Position 2 for operator cleaning and position 3 for operator loading. Glass door does not stay open in these positions unless lock is set by operator.
2. Salat Duo Switch display offers dual temperature so at one time either one side is hot and the other side is cold or both are cold. It takes approximately 30 minutes to transition from one temperature to another.
3. A 1 1/8" diameter drain is provided. For remote only, the drain **MUST** be run to a floor drain **AT TIME OF INSTALLATION**. Factory recommends allowing 6-8" underneath unit for proper drainage.
4. Front and Rear ventilation louvers, **MUST** be provided in the cabinet or counter and located so to provide full ventilation for the condensing unit. Refrigeration System is designed so air will flow rear to front. Unobstructed air flow must be maintained to ensure unit performance and maintain warranty.
5. RPI Merchandiser is designed for use in stores where ambient temperatures and humidity do not exceed 75 Degrees Fahrenheit and 55% R.H. Locate away from direct sunlight, rapid air currents and extreme temperature changes. Exposure to air currents from ceiling fans, air conditioning diffusers, ovens, etc. will disrupt the case air curtain and refrigerated zone. Refrigerated Displays are designed to maintain pre-chilled products. Adding or loading warm products above 41 Degrees Fahrenheit can affect the temperature in the entire cabinet. Any adverse field conditions stated above will void warranty.

RPI in line with its policy to continually improve its products reserves the right to change materials and specifications without notice.

CALL TOLL FREE: 800-525-3692 (609-714-2330)

FAX: 609-714-2331 www.rpiindustries.com

220 ROUTE 70, MEDFORD, NJ 08055

RPI INDUSTRIES, INC. v5_24_23