

VIENNA SALAT DUO SWITCH

PROJECT: _____
ITEM: _____ QUANTITY: _____

MODEL # VIAP-SALAT DUO SWITCH

SPECIFICATIONS

The Vienna Salat Duo Switch is a two-sided drop-in salad bar display which offers dual temperature settings for hot and cold product. Tempered glass display, with lift-up glass doors on each side, maintains case temperature and product freshness but allows for easy self-service application. Flip up doors are lockable in 3 positions: for NSF serving as well as operator cleaning and loading. This dual sided island display has the ability for flat or slanted presentation. Unit can also be provided with stainless base and legs for freestanding display.

Available lengths: ☐ 55 3/4" ☐ 81 1/4"

Available depths: ☐ 54 1/8"

Available heights: ☐ 46 1/8" (VIAP4) ☐ 47 7/8" (VIAP6)



STANDARD FEATURES

- 304 Stainless Steel Exterior & Interior
- Adjustable Deck Pan to Convert to Slanted Display
- Easy Removable Deck Pans for Cleaning
- Tempered Glass With Flip-Up Doors
- Gas Spring Door Lifts in 3 Lockable Positions
- Mirrored perforated air tower
- Mirrored interior center walls
- LED Top Canopy Lights
- Hot Plates on one side of the display
- Warming lights on one side of display
- Hot Gas Condensate Evaporation
- Programmable Digital Refrigeration Controllers
- Self-Contained Refrigeration with Pull-Out Compressor Housing
- Forced Air Cooling System
- Lift-Up Evaporator
- ETL Listed in Accordance with UL 471 and NSF 7 Standards
- Environmentally Safe Refrigerant
- 5 Year Compressor Warranty (2x)

OPTIONAL FEATURES

- ☐ Remote Refrigeration (Floor Drain Required)
- ☐ Stainless Steel Slide-In Base
- ☐ Stainless Steel PRO style Freestanding Base
- ☐ Stainless Legs
- ☐ Casters With Additional Leveling Feet
- ☐ Integrations Modular Counter (Consult Factory)
- ☐ Adapter Bars for Standard Pans (Pans Not Included)

MODEL	L	D	H	PANS	HP	VOLT	AMP	PLUG	WT	REFRIG.	CUT-OUT SIZE
VIAP4-0-R-SC-SALAT DUO SWITCH	55 3/4	54 1/8	46 1/8	8	(2x) 3/8	(2x) 115/208-230V 4-wire	(2x) 13.4	(2x)L14-20P	1321	134A	54 1/2 x 53
VIAP6-0-R-SC-SALAT DUO SWITCH	81 1/4	54 1/8	47 7/8	12	(2x) 1/2	(2x) 115/208-230V 4-wire	(2x) 17.4	(2x)L14-20P	1669	134A	80 1/4 x 53

CALL TOLL FREE: 800-525-3692 (609-714-2330)

FAX: 609-714-2331 www.rpiindustries.com

220 ROUTE 70, MEDFORD, NJ 08055



Conforms to UL Standard 471,
and NSF Standard 7; Certified
To CSA Standard C22.2 No.120



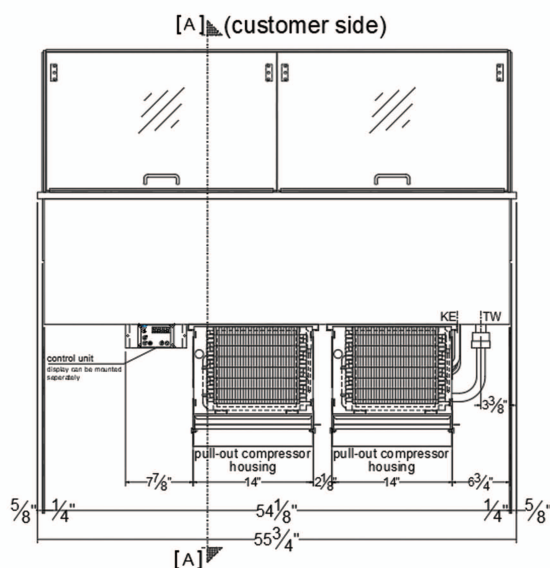
INDUSTRIES, INC. v3_22_21

VIENNA SALAT DUO SWITCH

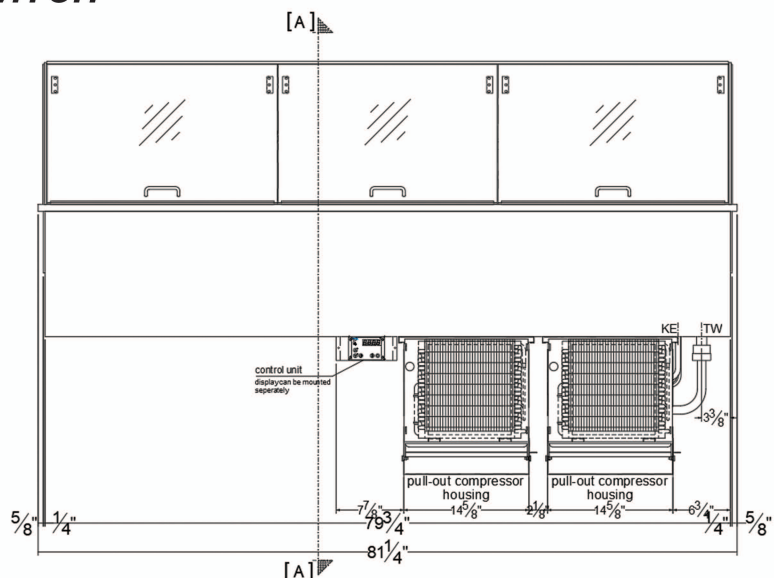
PROJECT: _____

TOLL FREE: 800-525-3692

MODEL # VIAP-SALAT DUO SWITCH

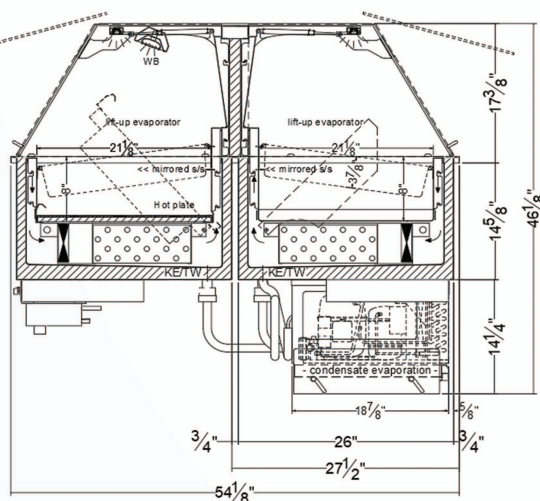


VIAP4



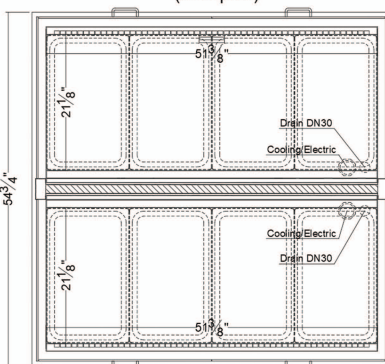
VIAP6

(section A-A)



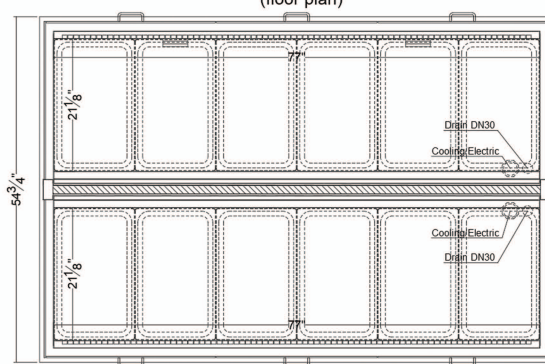
VIAP4 - VIAP6

(floor plan)



VIAP4

(floor plan)



VIAP6

Electrical & Plumbing locations

**1 1/8" HOLE REQUIRED FOR
COOLING AND DRAINAGE LINES**

1. Front glass is lockable in 3 positions with position 1 being for NSF application. Position 2 for operator cleaning and position 3 for operator loading. Glass door does not stay open in these positions unless lock is set by operator.
2. Salat Duo Switch display offers dual temperature so at one time either one side is hot and the other side is cold or both are cold. It takes approximately 30 minutes to transition from one temperature to another.
4. A 1 1/8" diameter drain is provided. For remote only, the drain **MUST** be run to a floor drain **AT TIME OF INSTALLATION**. Factory recommends allowing 6-8" underneath unit for proper drainage.
5. Front and Rear ventilation louvers, **MUST** be provided in the cabinet or counter and located so to provide full ventilation for the condensing unit. Refrigeration System is designed so air will flow rear to front. Unobstructed air flow must be maintained to ensure unit performance and maintain warranty.
6. RPI Merchandiser is designed for use in stores where ambient temperatures and humidity do not exceed 75 Degrees Fahrenheit and 55% R.H. Locate away from direct sunlight, rapid air currents and extreme temperature changes. Exposure to air currents from ceiling fans, air conditioning diffusers, ovens, etc. will disrupt the case air curtain and refrigerated zone. Refrigerated Displays are designed to maintain pre-chilled products. Adding or loading warm products above 41 Degrees Fahrenheit can affect the temperature in the entire cabinet. Any adverse field conditions stated above will void warranty.

RPI in line with its policy to continually improve its products reserves the right to change materials and specifications without notice.

CALL TOLL FREE: 800-525-3692 (609-714-2330)

FAX: 609-714-2331 www.rpiindustries.com

220 ROUTE 70, MEDFORD, NJ 08055



INDUSTRIES, INC. v3_22_21