

VIENNA COLD DISPLAY SLANTED / FLIP-DOORS

PROJECT: _____
ITEM: _____ **QUANTITY:** _____

MODEL # VICD-SL FD SLANTED GLASS w/ FLIP-UP DOORS

SPECIFICATIONS

The Vienna Series VICD-SL FD Slide-in or Drop-in is a refrigerated display merchandiser, featuring insulated glass side panels and slanted front glass with "flip-up" compartment access doors for self-serve application. Unit is available in choice of three heights with hinged rear see-through access doors. When being used as a "slide-in" please advise if counter height is 34" or 36". Optional 6" or 8" stainless steel adjustable legs or casters are available for slide-in style models.



Available lengths: 31 1/2" 44 3/8" 57 1/8"
Available depths: 27 3/8"
Available (above counter) heights: 21 1/4" 28" 34 5/8"

STANDARD FEATURES

- Slanted Glass Profile
- 304 Stainless Steel Exterior
- Tempered Glass Top and Insulated Glass Side Panels
- Acrylic Glass front Flip-Up Access Doors
- Hinged Rear See-Through Access Doors
- Fully adjustable Tempered Glass Shelves (tiltable to 7 degrees)
- Easy Removable Deck Pans for Cleaning
- Programmable Digital Refrigeration Controller
- Self-Contained Refrigeration with Slide-In Base
- Rear Air Ventilation Kit
- Energy Efficient LED Lighting (Plug-In)
- Fan Assisted Cooling System
- Integrated Top Air Duct
- Lift-Up Evaporator
- ETL Listed in Accordance with UL 471 and NSF 7 Standards
- Environmentally Safe Refrigerant
- 5 Year Compressor Warranty
- Condensate Pan Included (self-contained only)

OPTIONAL FEATURES

- Drop-In Style (Consult Factory for Additional Information)
- Flantastic Coil (For Increase Natural Humidity)
- Remote Refrigeration
- Powder Coat Finish
- Front Air Ventilation
- Rear Cutting Board
- Mirrored Rear Access Doors
- Rear Door Locks
- Integrations Modular Counter (Consult Factory)
- Adjustable Legs & Casters (Slide-In Units)
 - 6" Legs 8" Legs
 - 6" Casters

New Optional Feature: Flantastic Coil

Advanced technology with evaporative cooling system that adds natural humidification for increase in product freshness

MODEL	L	D	H	HP	VOLT	AMPS	PLUG	WT	REFRIG.	DROP IN C/O SIZE	SLIDE IN C/O SIZE
VICD2-20-R-SL-SC FD	31 1/2	27 3/8	21 1/4	1/4	115	4.8	5-15P	531	R448A	29 1/4 x 26 3/8	29 1/4 x VARIES
VICD3-20-R-SL-SC FD	44 3/8	27 3/8	21 1/4	1/3	115	5.7	5-15P	582	R448A	42 1/8 x 26 3/8	42 1/8 x VARIES
VICD4-20-R-SL-SC FD	57 1/8	27 3/8	21 1/4	1/3	115	5.9	5-15P	658	R448A	54 7/8 x 26 3/8	54 7/8 x VARIES
VICD2-27-R-SL-SC FD	31 1/2	27 3/8	28	1/3	115	5.7	5-15P	557	R448A	29 1/4 x 26 3/8	29 1/4 x VARIES
VICD3-27-R-SL-SC FD	44 3/8	27 3/8	28	1/3	115	6.0	5-15P	607	R448A	42 1/8 x 26 3/8	42 1/8 x VARIES
VICD4-27-R-SL-SC FD	57 1/8	27 3/8	28	3/8	115	7.8	5-15P	683	R448A	54 7/8 x 26 3/8	54 7/8 x VARIES
VICD2-34-R-SL-SC FD	31 1/2	27 3/8	34 5/8	3/8	115	7.3	5-15P	607	R448A	29 1/4 x 26 3/8	29 1/4 x VARIES
VICD3-34-R-SL-SC FD	44 3/8	27 3/8	34 5/8	3/8	115	7.8	5-15P	658	R448A	42 1/8 x 26 3/8	42 1/8 x VARIES
VICD4-34-R-SL-SC FD	57 1/8	27 3/8	34 5/8	1/2	115	9.4	5-15P	619	R448A	54 7/8 x 26 3/8	54 7/8 x VARIES

CALL TOLL FREE: 800-525-3692 (609-714-2330)
 FAX: 609-714-2331 www.rpiindustries.com
 220 ROUTE 70, MEDFORD, NJ 08055



RPI INDUSTRIES, INC. v10_19_23



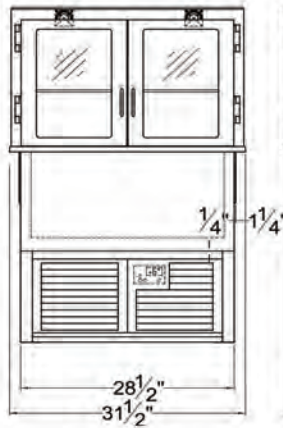
Conforms to UL Standard 471, and NSF Standard 7; Certified To CSA Standard C22.2 No. 120

VIENNA COLD DISPLAY SLANTED / FLIP-DOORS

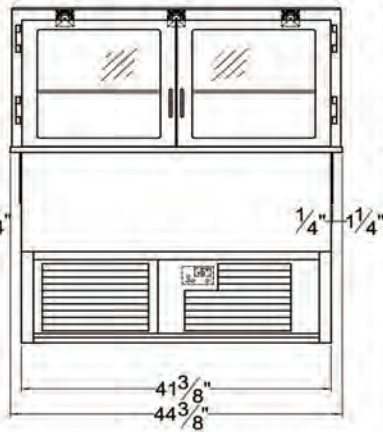
PROJECT:

TOLL FREE: 800-525-3692

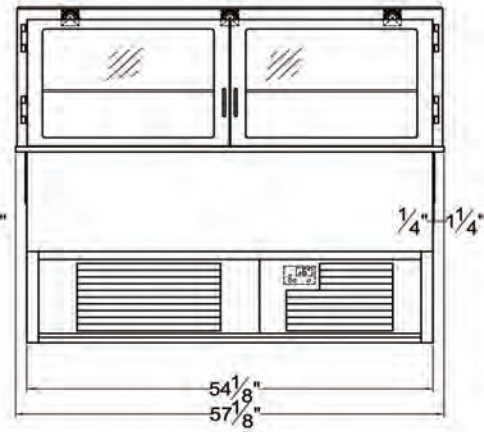
MODEL # VICD-SL FD SLANTED GLASS w/ FLIP-UP DOORS



VICD2(A)-R-SL-SC FD



VICD3(A)-R-SL-SC FD

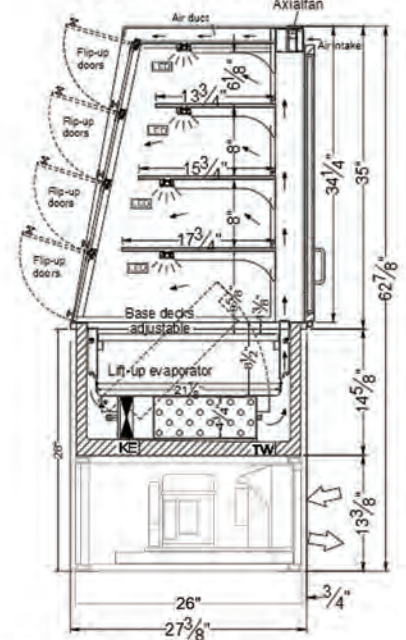
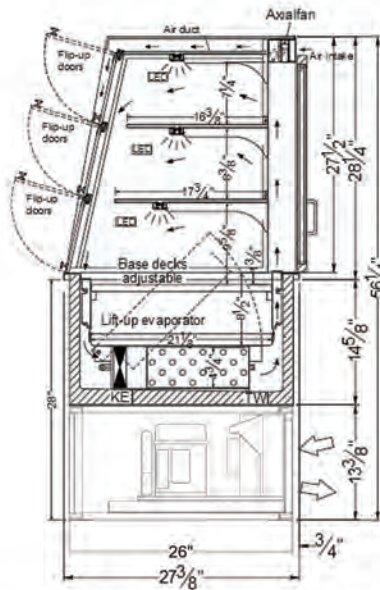
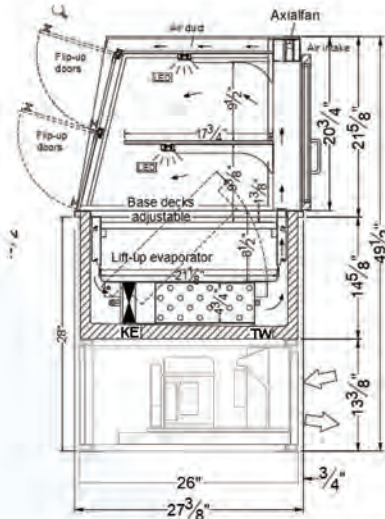


VICD4(A)-R-SL-SC FD

VICD(A)-20-R-SL-SC FD

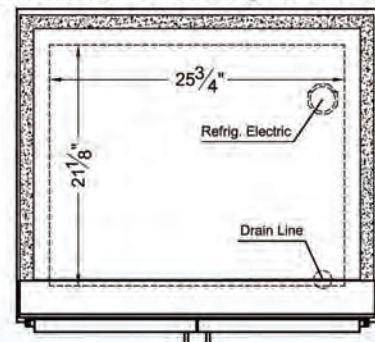
VICD(A)-27-R-SL-SC FD

VICD(A)-34-R-SL-SC FD



LARGEST DIMENSION REPRESENTS OUTSIDE FLANGE

Electrical & Plumbing locations



1. Ventilation louvers **MUST** be provided in the cabinet or counter and located so to provide full ventilation for the condensing unit.

2. The VICD-SL FD merchandiser is designed for use in locations where temperatures and humidity do not exceed 75 degrees and 55% R.H. Locate away from direct sunlight, rapid air currents and extreme temperature changes. Exposure to air currents from ceiling fans, air conditioners, ovens, etc. will disrupt the cases air current and refrigeration zone within. Any adverse field conditions stated above will void warranty.

RPI in line with it's policy to continually improve it's product reserves the right to change materials and specifications without notice.

CALL TOLL FREE: 800-525-3692 (609-714-2330)

FAX: 609-714-2331 www.rpiindustries.com

220 ROUTE 70, MEDFORD, NJ 08055



RPI INDUSTRIES, INC. v10_19_23