

VIENNA SELECT COLD COMBO

PROJECT: _____

ITEM: _____ QUANTITY: _____

MODEL # VSCD-SQ CC SQUARED GLASS

SPECIFICATIONS

The Vienna Series VSCD-SQ Cold Combo is a slide-in cold display in our Vienna Select Series. Designed to slide into a counter with front stainless steel panel exposed. Unit comes standard with insulated glass front and side panels, and a tempered glass top that tilts up using gas-springs for support for easy cleaning. It also features stainless steel exterior, top canopy light, (1) fixed refrigerated glass shelf and sliding rear access doors. The rear houses an area for cold pans and includes a sliding utility board. Can complete a dual temperature line-up next to our Vienna Hot and Dry Select Line cases.



Available lengths: 50 5/8" 66 1/2"

Available depths: 42 1/2"

Available heights: 50 7/8"

STANDARD FEATURES

- Squared Glass Profile
- 304 Stainless Steel Exterior
- Tilt-Up Tempered Top Glass
- Insulated Front Glass and Side Glass Panels
- Acrylic Glass Rear Sliding Doors
- Rear Cold Air Pans (Operator Side)
- Rear Sliding Cutting Board
- Casters
- Top Canopy Light
- (1) Fixed Refrigerated Glass Shelf with Light
- Energy Efficient LED Lighting
- Adjustable Deck Pans to Convert to Slanted Display
- Programmable Digital Refrigeration Controller
- Self-Contained Refrigeration with Integrated Compressor Housing
- Adjustable Fan Speed
- Lift-Up Evaporator
- Rear Air Ventilation Kit
- ETL Listed in Accordance with UL 471 and NSF 7 Standards
- Environmentally Safe Refrigerant
- 5 Year Compressor Warranty
- Floor Drain Required

OPTIONAL FEATURES

- Remote Refrigeration
- Integrations Modular Counter (Consult Factory)

MODEL	L	D*	H	COMP HP	VOLT	AMP	PLUG	WT	REFRIG.
VSCD3-20-R-SQ CC	50 5/8	42 1/2	50 7/8	1/2	115	9.5	5-15P	680	404A
VSCD4-20-R-SQ CC	66 1/2	42 1/2	50 7/8	3/4	115/208-230	5.4	14-20P	815	404A

* Depth does not include rear cutting board.



Conforms to UL Standard 471, and NSF Standard 7; Certified To CSA Standard C22.2 No.120

CALL TOLL FREE: 800-525-3692 (609-714-2330)

FAX: 609-714-2331 www.rpiindustries.com

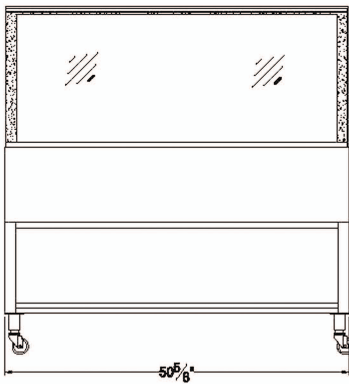
220 ROUTE 70, MEDFORD, NJ 08055

RPI INDUSTRIES, INC. v5_25_23

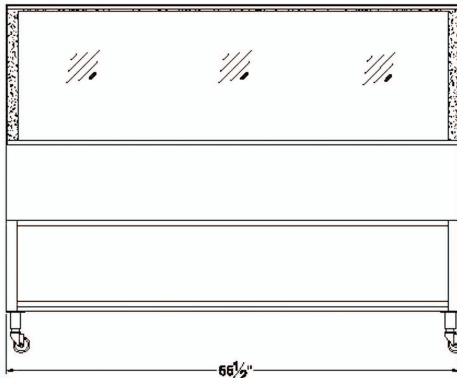
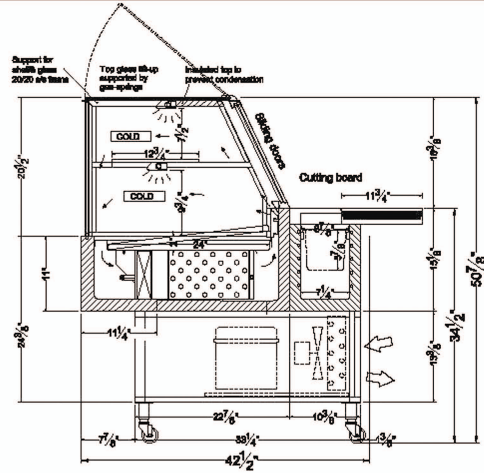
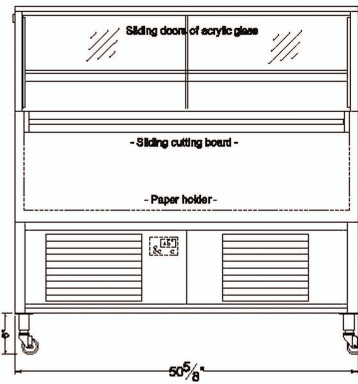
VIENNA SELECT **COLD COMBO**

MODEL # **VSCD-SQ CC SQUARED GLASS**

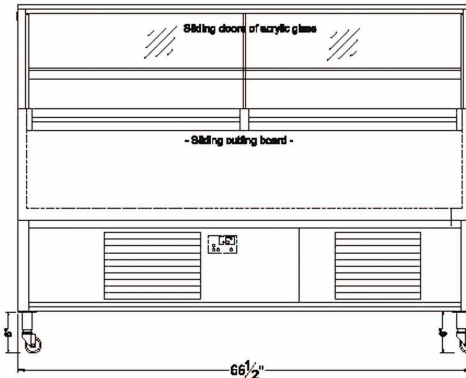
PROJECT: _____
TOLL FREE: 800-525-3692



VSCD3-20-R-SQ-SC CC

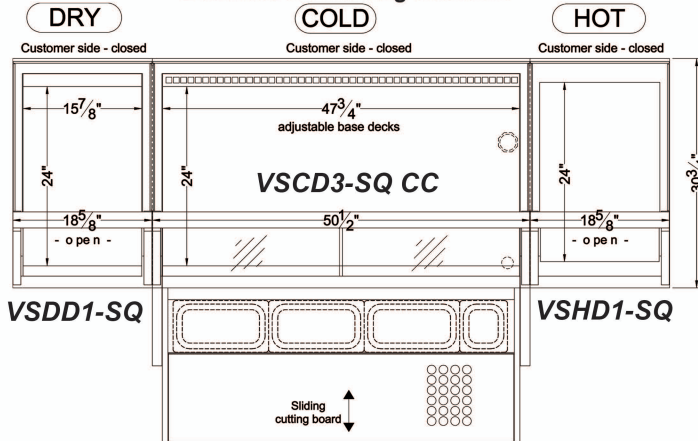


VSCD4-20-R-SQ-SC CC



* 448a refrigeration available at no additional cost - please specify

Electrical & Plumbing locations



Vienna Select Cold Combo can complete a dual temperature line-up next to our Vienna Hot and Dry Select Line cases!

1. A 1" diameter drain is provided. The drain **MUST** be run to a floor drain **AT TIME OF INSTALLATION**.
 2. RPI Merchandiser is designed for use in stores where ambient temperatures and humidity do not exceed 75 Degrees Fahrenheit and 55% R.H. Locate away from direct sunlight, rapid air currents and extreme temperature changes. Exposure to air currents from ceiling fans, air conditioning diffusers, ovens, etc. will disrupt the case air curtain and refrigerated zone. Refrigerated Displays are designed to maintain pre-chilled products. Adding or loading warm products above 41 Degrees Fahrenheit can affect the temperature in the entire cabinet. Any adverse field conditions stated above will void warranty.
- RPI in line with its policy to continually improve its products reserves the right to change materials and specifications without notice.

CALL TOLL FREE: 800-525-3692 (609-714-2330)
FAX: 609-714-2331 www.rpiindustries.com
 220 ROUTE 70, MEDFORD, NJ 08055

