

# VIENNA Hot/COLD COMBO DISPLAY

**PROJECT:** \_\_\_\_\_  
**ITEM:** \_\_\_\_\_ **QUANTITY:** \_\_\_\_\_

## MODEL # VSHC4-34-R-SC-SE-ECS

### SPECIFICATIONS

The Hot/Cold Combo offers versatility with 4 functions in a small footprint. Angled presentation is offered for heated and refrigerated product with top isolated assisted service!

Available lengths: ☐ 59 1/2"  
 Available depths: ☐ 43 7/8"  
 Available heights: ☐ 56 1/2"



### STANDARD FEATURES

- Self-Contained Refrigeration
- Stainless steel interior and exterior
- Open rear at service side
- Lift-up front glass
- Half Cold / Half Heated
- Refrigerated rear drawer @ cold section
- Warming rear drawer @ heated section
- Sliding pull out cutting board at drawer sections
- Tempered glass top
- Insulated glass sides and common glass divider
- Slanted ambient glass shelf @ cold section
- Slanted heated black glass shelf
- Canopy and shelf light
- Adjustable bottom deck with adjustable chute brackets
- Programmable digital display controller for hot and cold
- Variable fan speed adjustment
- Rear breathing
- ETL listed in accordance with UL 471 and NSF 7 standards

### OPTIONAL FEATURES

- ☐ Remote refrigeration
- ☐ Stainless steel adjustable legs / casters
- ☐ Flex Series Paneling Profiles:
  - ☐ (FP) Full Front ☐ (HF) Half Front ☐ (HT) Half Tapered
- ☐ Flex Series Flat Paneling Finish Options:
  - ☐ #4 Brushed Stainless Steel ☐ #8 Mirror Polished Stainless Steel
  - ☐ Laminate ☐ Wood Veneer

Self Contained	L	D	H	VOLT	AMP	PLUG	WT	REFRIG.
VSHC4-34-R-SC-SE-ECS	59 1/2	43 7/8	56 1/2	115/208-230V	15.0	L14-20P	1200	134A

Remote	L	D	H	BTU's	VOLT	AMP	PLUG	WT	REFRIG.
VSHC4-34-R-RR-SE-ECS	59 1/2	43 7/8	56 1/2	2, 024	115/208-230	8.5	L14-20P	1170	Verify

BTUh @ 14°evap



Conforms to UL Standard 471,  
and NSF Standard 7; Certified  
To CSA Standard C22.2 No. 120

CALL TOLL FREE: 800-525-3692 (609-714-2330)

FAX: 609-714-2331 [www.rpiindustries.com](http://www.rpiindustries.com)

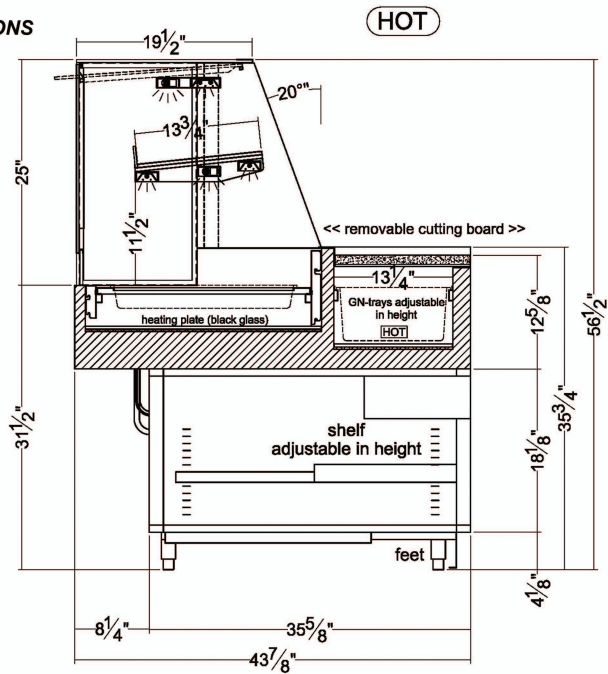
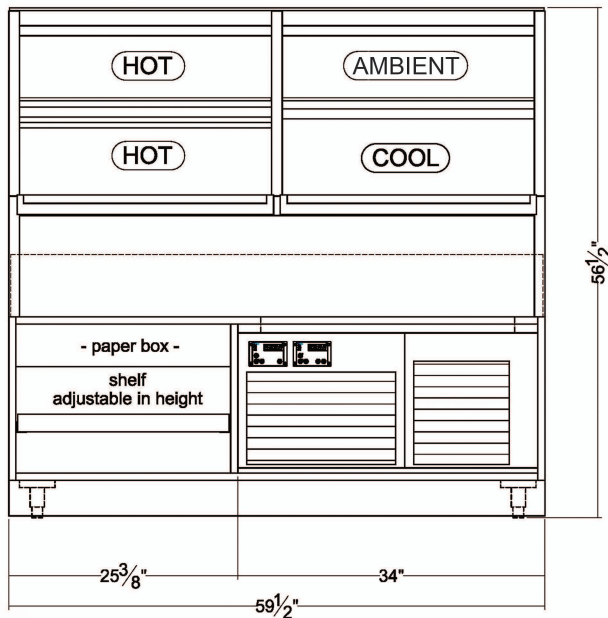
220 ROUTE 70, MEDFORD, NJ 08055



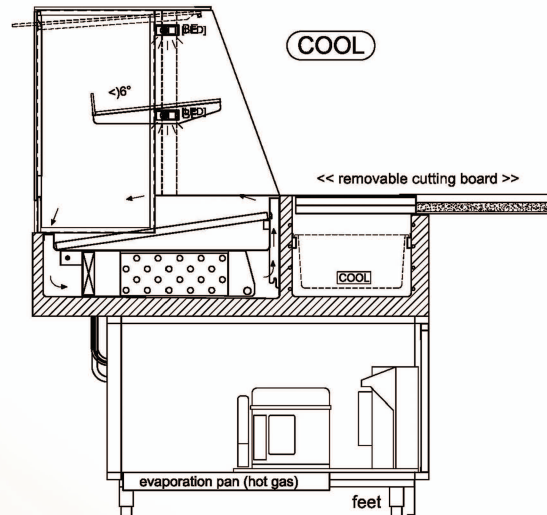
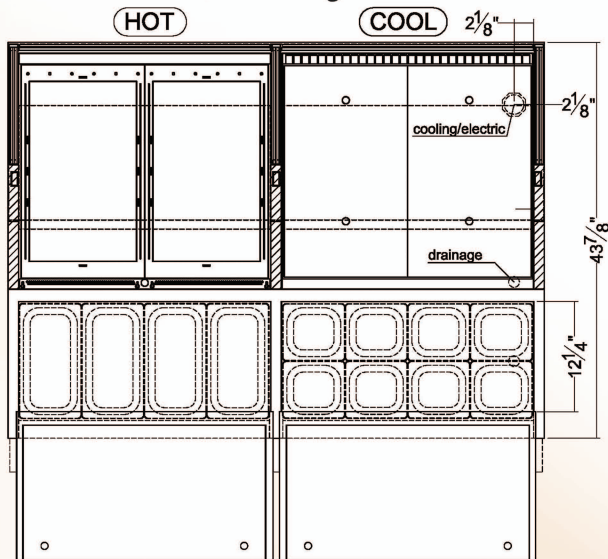
INDUSTRIES, INC. v5\_25\_23

## MODEL # VSHC4-34-R-SC-SE-ECS

SHOWN WITH OPTIONAL LEGS / CASTERS IN THEIR INSTALLED POSITIONS



### Electrical & Plumbing locations



**2 1/2" HOLE REQUIRED FOR  
COOLING AND DRAINAGE LINES**

\* 448a refrigeration available at no additional cost - please specify

1. A 1 1/8" diameter drain is provided. The drain **MUST** be connected to a floor drain or storage container **AT TIME OF INSTALLATION**.
2. For self-contained units, rear ventilation louvers, **MUST** be provided in the cabinet or counter and located so to provide full ventilation for the condensing unit.
3. For remote units, refrigerant must be verified by customer at the time of order to ensure proper expansion value is provided
4. The VSHC snackee merchandiser is designed for use in locations where temperatures and humidity do not exceed 75 degrees and 55% R.H. Locate away from direct sunlight, rapid air currents and extreme temperature changes. Exposure to air currents from ceiling fans, air conditioners, ovens, etc. will disrupt the cases air current and refrigeration zone within. Any adverse field conditions stated above will void warranty.

RPI in line with it's policy to continually improve it's product reserves the right to change materials and specifications without notice.

CALL TOLL FREE: 800-525-3692 (609-714-2330)

FAX: 609-714-2331 [www.rpiindustries.com](http://www.rpiindustries.com)

220 ROUTE 70, MEDFORD, NJ 08055