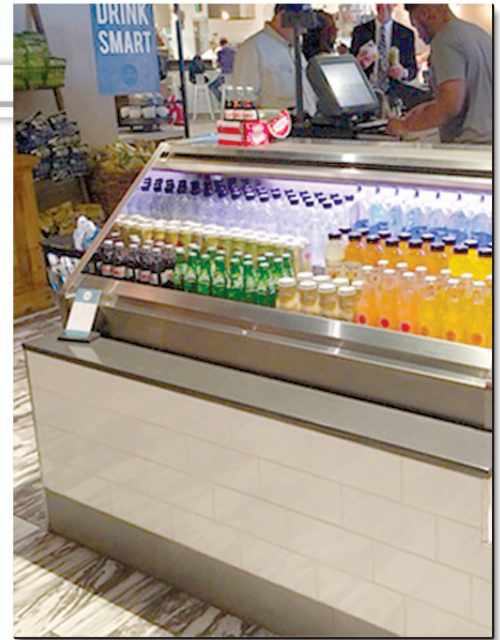


## MODEL # SCRFC

## SPECIFICATIONS

The Bravo Air Screen SCRFC Series is a refrigerated self-service display case with front and optional rear air grills, brushed aluminum interior ends and a choice of standard grade plastic laminate exterior. The self-contained refrigeration system includes digital controls allowing unit to engage in minimal defrost cycles. Front mounted red indicator light alerts the operator if condensing unit requires cleaning. Optional stainless steel exterior available upon request. Unique design allows zero clearance from wall.



**Available lengths:**  36"  48"  60"  72"

**Available depths:**  32 5/8"

**Available heights:**  45 1/8"

### STANDARD FEATURES

- DOE 2017 Compliant
- Self-Contained Refrigeration
- Metal Frame Base Construction with Lift-Out Black Louvered Air Grill for Easy Access to Compressor
- Standard Grade Laminate Exterior
- T-Mold Edge Protection
- Brushed Aluminum Interior Ends
- Stainless Steel Perforated Interior Back Panel
- LED Top Canopy Light
- Removable Stainless Steel Deck Pan with Hemmed Edge to Contain Spills
- Electronic Digital Control and Defrost Termination
- Red Indicator Light Alerts Operator if Condenser Requires Cleaning
- Digital Temperature Display
- Unique Internal Baffle Design for Compressor Noise Reduction
- Front Air Intake with Rear Air Discharge for Zero Clearance
- Easy Slide-Out Condensing Unit (4', 5' & 6' Units)
- 8' Cord and Plug
- Conforms to NSF STD 7 Refrigeration
- Environmentally Safe Refrigerant
- 1 Year Parts and Labor Warranty
- Floor Drain Required
- 5 Year Compressor Warranty

### OPTIONAL FEATURES

- Green Screen
- Remote Refrigeration
- Stainless Steel Exterior Finish with Standard T-Molding
  - #4  #6  #8
- Special Laminates
- Wood Veneers (Stained & Sealed)
- Miscellaneous Trim
- Black Styrene Step Sham
- Stainless Steel Step Sham
- 10 Inch Middle Shelf
- Casters (Increases Height by 4")
- Adjustable Legs (Consult Factory for Sizes)
- Powder Coated Interior Back Panel and Hardware
  - Black  White  Custom Color
- Mirrored Polished Stainless Steel Interior Ends (#8 Finish)
- Mirrored Polished Stainless Steel Perforated Interior Back Panel (#8 Finish)
- Finished Back with Black Air Grill
- Stainless Steel Louvered Air Grill
- Removable Locking Security Panels
- Pull Down #23 Econo Frost Night Curtain
- Thermometer

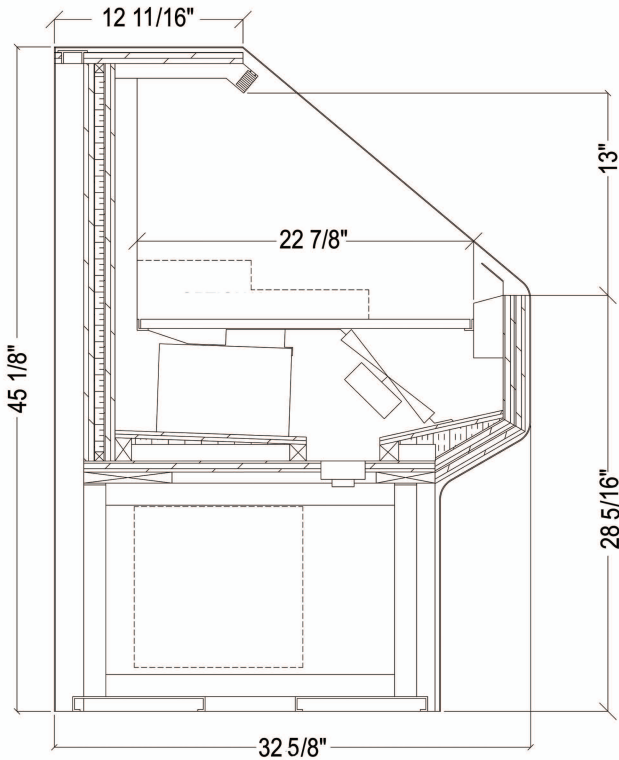
CALL TOLL FREE: 800-525-3692 (609-714-2330)

FAX: 609-714-2331 [www.rpiindustries.com](http://www.rpiindustries.com)

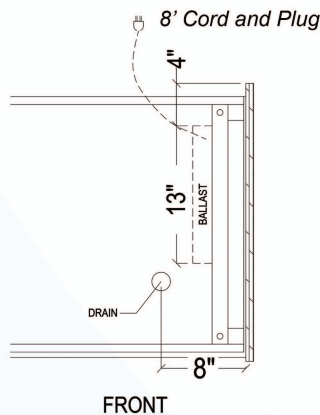
220 ROUTE 70, MEDFORD, NJ 08055



## MODEL # SCRFC



UNIT SHOWN WITH OPTIONAL STEP SHAM



FRONT

### Electrical & Plumbing locations

1. All Self-Contained, Remote and Glycol Units must be run to a floor drain at time of installation.
2. Refrigeration System is designed so air will flow front to rear. Unobstructed air flow must be maintained to ensure unit performance and maintain warranty.
3. The SCRFC (Bravo) merchandiser is designed for use in stores where ambient temperatures and humidity do not exceed 75 Degrees Fahrenheit and 55% R.H. Locate away from direct sunlight, rapid air currents and extreme temperature changes. Exposure to air currents from ceiling fans, air conditioning diffusers, ovens, etc. will disrupt the case air curtain and refrigerated zone. Refrigerated Displays are designed to maintain pre-chilled products. Adding or loading warm products above 41 Degrees Fahrenheit can affect the temperature in the entire cabinet. Any adverse field conditions stated above will void warranty.

RPI in line with its policy to continually improve its products reserves the right to change materials and specifications without notice.

CALL TOLL FREE: 800-525-3692 (609-714-2330)

FAX: 609-714-2331 [www.rpiindustries.com](http://www.rpiindustries.com)

220 ROUTE 70, MEDFORD, NJ 08055

## SELF - CONTAINED

MODEL	L	D	H	HP	VOLT	AMP	PLUG	WT	REFRIG.
SCRFC3648R	36	32 5/8	45 1/8	1/2	115	12.4	5-20P	360	134A
SCRFC4848R	48	32 5/8	45 1/8	1/2	115	12.5	5-20P	450	134A
SCRFC6048R	60	32 5/8	45 1/8	3/4	115/208-230 4 wire	10.9	L14-30P	540	404A
SCRFC7248R	72	32 5/8	45 1/8	3/4	115/208-230 4 wire	11.0	L14-30P	630	404A

## AMBIENT

MODEL	L	D	H	VOLT	AMP	PLUG	WT
SCRFC3648D	36	32 5/8	45 1/8	115	0.8	5-15P	310
SCRFC4848D	48	32 5/8	45 1/8	115	0.10	5-15P	400
SCRFC6048D	60	32 5/8	45 1/8	115	0.13	5-15P	440
SCRFC7248D	72	32 5/8	45 1/8	115	0.16	5-15P	530

## REMOTE - REFRIGERATED

MODEL	BTU @ 20° F	VOLT	AMP	PLUG	WT	REFRIG.
SCRFC3648R-RR	4140	115	1.0	5-15P	310	Verify
SCRFC4848R-RR	4140	115	1.0	5-15P	400	Verify
SCRFC6048R-RR	7470	115	1.5	5-15P	440	Verify
SCRFC7248R-RR	7470	115	1.5	5-15P	530	Verify

## GLYCOL

MODEL	BTU @ 20° F	VOLT	AMP	PLUG	WT	GPM	REFRIG.
SCRFC3648R-RR-GL	4140	115	1.0	5-15P	310	1.0	GLYCOL
SCRFC4848R-RR-GL	4140	115	1.0	5-15P	400	1.0	GLYCOL
SCRFC6048R-RR-GL	7470	115	1.5	5-15P	440	1.5	GLYCOL
SCRFC7248R-RR-GL	7470	115	1.5	5-15P	530	1.5	GLYCOL



Conforms to UL Standard 471, and NSF Standard 7; Certified To CSA Standard C22.2 No. 120



RPI refrigerated merchandisers configured for sale for use in the United States meet or surpass the requirements of the DOE 2017 energy efficiency standards