

MODEL # SCRFC-SSI

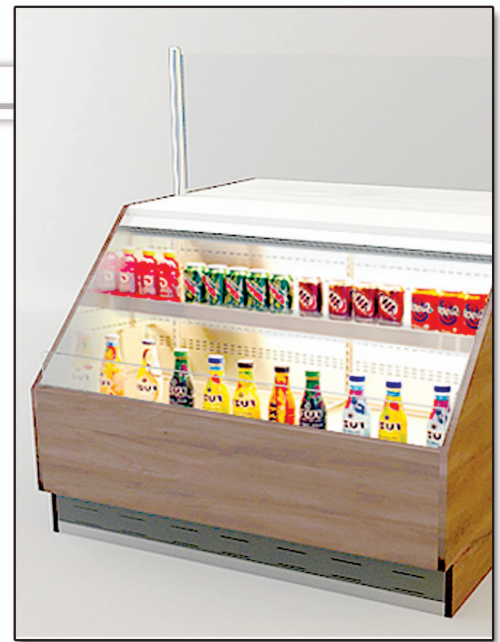
SPECIFICATIONS

The Stratus Air Screen SCRFC-SSI Series is designed as a self-select grab and go refrigerator in the front with rear working area on the operator service side. Open storage and vertical glass protector guard with stainless steel posts are mounted to a stainless steel workboard surface, along with a removable zip lite cutting board. Available with a choice of standard grade plastic laminate exterior ends.

Available lengths: 48" 60" 72"

Available depths: 48"

Available heights: 54 5/8"



STANDARD FEATURES

- DOE 2017 Compliant
- Self-Contained Refrigeration
- Black Louvered Air Grill (REAR BREATHING)
- Standard Grade Laminate Exterior with T-Mold Edge Protection
- Stainless Steel #4 Finish Vertical Posts with Clipped Tempered Glass
- Stainless Steel Top with Removable Zip Lite Cutting Board
- Brushed Aluminum Interior Ends
- Stainless Steel Perforated Interior Back Panel
- LED Top Canopy Light
- (1) Tempered Glass Shelf with LED Light
- Removable Stainless Steel Deck Pan with Hemmed Edge to Contain Spills
- Electronic Digital Control and Defrost Termination
- Red Indicator Light Alerts Operator if Condenser Requires Cleaning
- Digital Temperature Display
- 8' Cord and Plug
- ETL Listed in Accordance with UL 471 and NSF 7 Standards.
- Environmentally Safe Refrigerant
- 1 Year Parts and Labor Warranty
- Floor Drain Required
- Thermometer
- 5 Year Compressor Warranty

OPTIONAL FEATURES

- Stainless Steel Exterior Finish with Standard T-Molding
 - #4 #6 #8
- Special Laminates
- Wood Veneers (Stained & Sealed)
- Casters (Increases Height by 4")
- Adjustable Legs (Consult Factory for Sizes)
- Corian® Top Stock Color
- Corian® Top Non-Stock Color
- Zodiac® Top Stock Color
- Zodiac® Top Non-Stock Color
- Top Horizontal Stainless Steel Shelf on Protector Guard
- Top Horizontal Corian® Shelf and Protector Guard
- Cabinet Base with Rear Hinged Doors
- Finished Back with Black Air Grill
- Stainless Steel Rear Air Grill

Air Screen Section

- Remote Refrigeration
- Black Styrene Step Sham
- Stainless Steel Step Sham
- Stainless Steel Shelf
- Mirrored Polished Stainless Steel Interior Ends (#8 Finish)
- Mirrored Polished Stainless Steel Perforated Interior Back Panel (#8 Finish)
- Removable Locking Security Panels
- Energy Efficient #23 Pull-Down Night Curtain

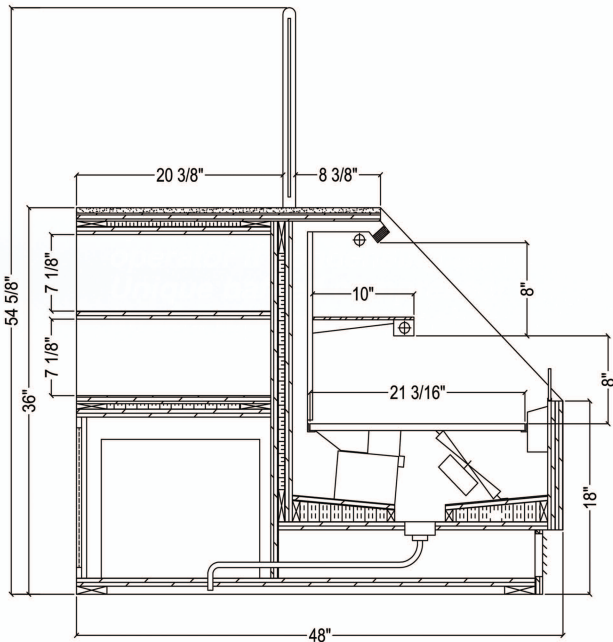


STRATUS AIR SCREEN

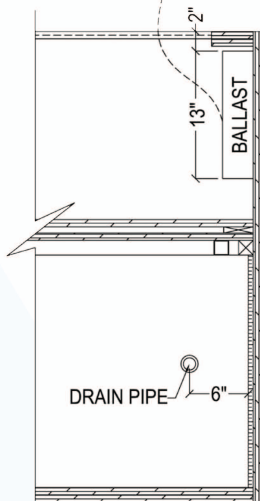
PROJECT: _____

TOLL FREE: 800-525-3692

MODEL # SCRFC-SSI



8' Cord and Plug



FRONT

SELF - CONTAINED

MODEL	L	D	H	HP	VOLT	AMP	PLUG	WT	REFRIG.
SCRFC48R-SSI	48	48	54 5/8	1/2	115	11.3	5-20P	1700	134A
SCRFC60R-SSI	60	48	54 5/8	3/4	115/208-230	8.8	L14-20P	2125	134A
SCRFC72R-SSI	72	48	54 5/8	3/4	115/208-230	8.7	L14-20P	2550	134A

AMBIENT

MODEL	L	D	H	VOLT	AMP	PLUG	WT
SCRFC48D-SSI	48	48	54 5/8	115	.21	5-15P	1500
SCRFC60D-SSI	60	48	54 5/8	115	.26	5-15P	1900
SCRFC72D-SSI	72	48	54 5/8	115	.31	5-15P	2350

REMOTE - REFRIGERATED

MODEL	BTU @ 20° F	VOLT	AMP	PLUG	WT	REFRIG.
SCRFC48R-SSI-RR	4140	115	1.13	5-15P	1500	Verify
SCRFC60R-SSI-RR	7470	115	1.60	5-15P	1900	Verify
SCRFC72R-SSI-RR	7470	115	1.65	5-15P	2350	Verify

GLYCOL

MODEL	BTU @ 20° F	VOLT	AMP	PLUG	WT	GPM	REFRIG.
SCRFC48R-SSI-RR-GL	4140	115	1.13	5-15P	1500	1.0	GLYCOL
SCRFC60R-SSI-RR-GL	7470	115	1.60	5-15P	1900	2.0	GLYCOL
SCRFC72R-SSI-RR-GL	7470	115	1.65	5-15P	2350	2.0	GLYCOL



Conforms to UL Standard 471, and NSF Standard 7; Certified To CSA Standard C22.2 No.120



Electrical & Plumbing locations

RPI refrigerated merchandisers configured for sale for use in the United States meet or surpass the requirements of the DOE 2017 energy efficiency standards

1. All Self-Contained, Remote and Glycol Units must be run to a floor drain at time of installation.
2. The SCRFC-SSI merchandiser is designed for use in stores where ambient temperatures and humidity do not exceed 75 Degrees Fahrenheit and 55% R.H. Locate away from direct sunlight, rapid air currents and extreme temperature changes. Exposure to air currents from ceiling fans, air conditioning diffusers, ovens, etc. will disrupt the case air curtain and refrigerated zone. Refrigerated Displays are designed to maintain pre-chilled products. Adding or loading warm products above 41 Degrees Fahrenheit can affect the temperature in the entire cabinet. Any adverse field conditions stated above will void warranty.

RPI in line with its policy to continually improve its products reserves the right to change materials and specifications without notice.

CALL TOLL FREE: 800-525-3692 (609-714-2330)

FAX: 609-714-2331 www.rpiindustries.com

220 ROUTE 70, MEDFORD, NJ 08055

RPI INDUSTRIES, INC. v8_31_17