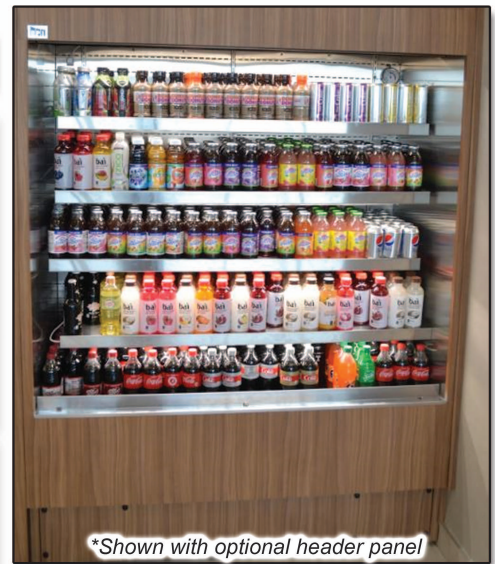


MODEL # SCAS-V-S-ME

SPECIFICATIONS

The Olympus V Market Express Air Screen SCAS-V-S-ME Series is a grab and go style refrigerator with squared end panels. The self-contained refrigeration system includes digital controls allowing unit to engage in minimal defrost cycles. Unique baffled compressor housing for front air intake, top rear air discharge reducing noise levels, plus zero clearance from wall installation. Unit comes standard with 4 adjustable extra deep shelves and with energy efficient LED lighting underneath the shelving.

NOTE: If unit is lined-up with Flexeserve Heated, overall depth will increase to 34"



Available lengths: 36" 48" 60" 72"

Available depths: 32"

Available heights: 78 1/2"

STANDARD FEATURES

- Self-Contained Refrigeration
- Squared Top Canopy
- Solid Contoured End Panels
- Top Bracket For Accomodating Optional Header Panel
- Smart Controller Electronic Digital Temperature Control and Defrost Termination
- Metal Frame Base Construction with Lift-Out Black Louvered Air Grill For Easy Access To Compressor
- Standard Grade Laminate Exterior
- Brushed Stainless Steel Interior Ends
- Stainless Steel Perforated Interior Back Panel
- 3000K LED Top Canopy Light
- Vertical Recessed Power Supply For Undershef Light
- 3 Positions Downslant Bracket
- (4) Adjustable Stainless Steel Extra Deep Shelves for Maximum Capacity, with 3000K LED Lighting
- Removable Stainless Steel Deck Pan with Hemmed Edge to Contain Spills
- Red Indicator Light Alerts Operator if Condenser Requires Cleaning
- Unique Internal Baffle Design for Compressor Noise Reduction
- Front Air Intake with Top Rear Air Discharge for Zero Clearance
- Easy Slide-Out Condensing Unit For Service
- 8' Cord and Plug
- ETL Listed in Accordance with UL 471 and NSF 7 Type II Refrigeration
- Environmentally Safe Refrigerant
- Floor Drain Required
- Energy Saving Night Curtain
- 1 Year Parts and Labor Warranty
- 5 Year Compressor Warranty

OPTIONAL FEATURES

- Condensate Evaporator Pan
- Remote Refrigeration
- Smart Door – motorized door activated by food simulator which automatically closes when product registers above 40°F
- Smart Door with Battery Back-up
- Top Mount Proximity Motion Sensor (Interior light only)
- Mirrored Polished Stainless Steel Interior Ends (#8)
- Mirrored Polished Stainless Steel Perforated Interior Back Panel (#8)
- Powder Coated Interior Back Panel and Hardware
 - Black White Custom Color
- Side Vision End Panels
- Heated Insulated Glass Vision End Panels
- Heated Insulated Glass Vision End Panels with LED lights
- Heated Insulated Glass Vision End Panels with LED lights around perimeter (adjustable from 3000k-5000k)
- Heated Insulated Programmable RGBWW 4-in-1 LED lights
- Adjustable thin profile LED shelf lighting with adjustable dimmer (3000k-5000k)
- Vertical thin profile LED lighting in lieu of lighting below shelves
- Tempered 3/8" Glass Shelving
- Wire Shelves White Black Chrome
- Stainless U shape front product display ledge for stainless shelves
- Acrylic Product Stop for Stainless Steel Shelving
- Acrylic Product Stop with Stainless Louvered Shelving
- Stainless Steel Exterior Finish #4 Brushed #8 Mirrored
- Special Laminate Exterior Finish
- Wood Veneer Exterior Finish (Stained & Sealed)
- Front Decorative Panels (remote units only, consult factory)
- Finished Back with Air Grill Stainless Steel Black
- Solid Insulated or See-Through Rear Sliding Doors (at 29 3/4" depth)
- Joining Kit Hardware
- Roll Down Locking Security Cover
- Adjustable legs up to 6"
- Casters
 - 3" 6"
- 24" High Header Panel (Graphics by others)
 - 16" High Lightbox Insert Header Backlit top header Laminate Header

CALL TOLL FREE: 800-525-3692 (609-714-2330)

FAX: 609-714-2331 www.rpiindustries.com

220 ROUTE 70, MEDFORD, NJ 08055

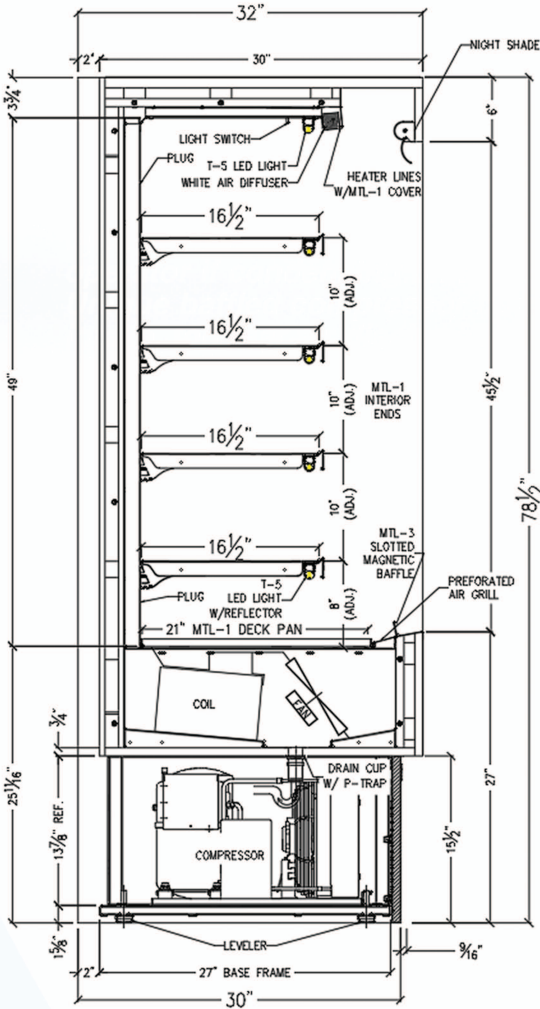


Conforms to UL Standard 471, and NSF Standard 7; Certified To CSA Standard C22.2 No.120



MODEL # SCAS-V-S-ME

SELF - CONTAINED - Floor Drain



MODEL	L	D	H	HP	VOLT	AMP	PLUG	WT	REFRIG.
SCAS36R-V-S-ME	36	32	78 1/2	1/2	115	14.6	5-20P	675	134A
SCAS48R-V-S-ME	48	32	78 1/2	1	115/208-230 4 wire	11.0	L15-20P	900	404A
SCAS60R-V-S-ME	60	32	78 1/2	1 1/4	115/208-230 4 wire	11.0	L15-20P	1020	404A
SCAS72R-V-S-ME	72	32	78 1/2	1 1/4	115/208-230 4 wire	14.1	L14-20P	1150	404A

SELF - CONTAINED - With Evaporator Pan

MODEL	L	D	H	HP	VOLT	AMP	PLUG	WT	REFRIG.
SCAS36R-V-S-ME	36	32	78 1/2	1/2	115	14.6	5-20P*	675	134A
SCAS48R-V-S-ME	48	32	78 1/2	1	115/208-230 4 wire	15.8	L15-30P	900	404A
SCAS60R-V-S-ME	60	32	78 1/2	1 1/4	115/208-230 4 wire	15.8	L15-30P	1020	404A
SCAS72R-V-S-ME	72	32	78 1/2	1 1/4	115/208-230 4 wire	18.9	L14-30P	1150	404A

* 448a refrigeration available at no additional cost - please specify

*Adding evaporator pan option to 36" unit requires a separate 115V circuit (pan shipped loose).

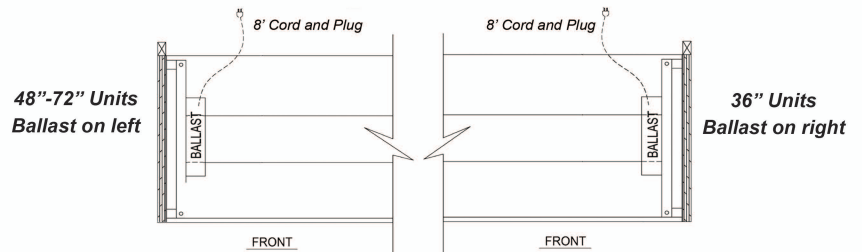
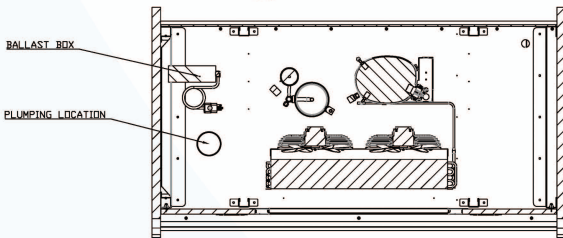
NOTE: A minimum of 18" clearance needed above unit for air discharge for self contained units.

REMOTE - REFRIGERATED

MODEL	BTU @ 20°F	VOLT	AMP	PLUG	WT	REFRIG.
SCAS36R-V-S-ME-RR	4140	115	10.5	5-15P	625	Verify
SCAS48R-V-S-ME-RR	7470	115	10.8	5-15P	800	Verify
SCAS60R-V-S-ME-RR	9960	115	11.1	5-15P	920	Verify
SCAS72R-V-S-ME-RR	9960	115	11.1	5-15P	1050	Verify

GLYCOL

MODEL	BTU @ 20°F	VOLT	AMP	PLUG	WT	GPM	REFRIG.
SCAS36R-V-S-ME-RR-GL	4140	115	10.5	5-15P	625	1.0	Verify
SCAS48R-V-S-ME-RR-GL	7470	115	10.8	5-15P	800	2.0	Verify
SCAS60R-V-S-ME-RR-GL	9960	115	11.1	5-15P	920	2.5	Verify
SCAS72R-V-S-ME-RR-GL	9960	115	11.8	5-15P	1050	2.5	Verify



Electrical & Plumbing locations

RPI refrigerated merchandisers configured for sale for use in the United States meet or surpass the requirements of the DOE 2017 energy efficiency standards

1. Refrigeration System is designed so air will flow front to rear. Unobstructed air flow must be maintained to ensure unit performance and maintain warranty.
2. The SCAS-V-S-ME merchandiser is designed for use in stores where ambient temperatures and humidity do not exceed 80 Degrees Fahrenheit and 60% R.H. Locate away from direct sunlight, rapid air currents and extreme temperature changes. Exposure to air currents from ceiling fans, air conditioning diffusers, ovens, etc. will disrupt the case air curtain and refrigerated zone. Refrigerated Displays are designed to maintain pre-chilled products. Adding or loading warm products above 41 Degrees Fahrenheit can affect the temperature in the entire cabinet. Any adverse field conditions stated above will void warranty.

RPI in line with its policy to continually improve its products reserves the right to change materials and specifications without notice.



Conforms to UL Standard 471, and NSF Standard 7; Certified To CSA Standard C22.2 No.120

Conforms to NSF STD 7

DOE 2017
Energy Efficiency
Compliant

TYPE II

CALL TOLL FREE: 800-525-3692 (609-714-2330)

FAX: 609-714-2331 www.rpiindustries.com

220 ROUTE 70, MEDFORD, NJ 08055

