



## About the Product

Form and function all rolled into one.

Cascade ideas with your team members and achieve those sales or host employee appreciation activities at work with this inspiring piece. Best situated in meeting rooms, lobbies, conference and seminar rooms.

*Unit is designed for warming, not cooking.*

### Features

- 6 top color
- Variable Induction quantities with 20 power levels
- Variable Ice Rock sizes
- Optional 3" casters easy moving
- 2 sizes available

### Model

HI stone top with water fall ends and 5" apron edge, laminate plate / utensil sill, raised single induction area with induc mate, remote control panel with off/on, display and 20 power levels, closed millwork base, Formica or Wilson Art standard laminate exterior, 115V/60/1, 12 amps, dedicated 15 amp circuit required, 8' cord, NEMA 5-15P.





### Options - 72"

#### Base

72" W x 30" W x 34"H

#### Deluxe

HI stone top with water fall ends and 5" apron edge, laminate plate/utensil sill, raised 24" Ice Rock area, closed millwork base, Formica or Wilson Art standard laminate exterior, self-contained refrigeration, 8' cord, NEMA 5-15P.

72" W x 30" W x 34"H

Compressor Warranty \$

*Please note when Ice Rock defrosts, water will accumulate on top surface.*

HI Stone available in 6 colors

### Options - 96"

#### Base

96" W x 30" W x 34"H

- Option: Add 1 induction unit

#### Deluxe

HI stone top with water fall ends and 5" apron edge, laminate plate/utensil sill, raised 24" Ice Rock area, closed millwork base, Formica or Wilson Art standard laminate exterior, self-contained refrigeration, 8' cord, NEMA 5-15P.

96" W x 30" W x 34"H

- Option: 36" Ice Rock
- Option: 48" Ice Rock

Compressor Warranty \$

HI Stone available in 6 colors

### Contact Us

Gary Hamilton  
gdhamilton@rpiindustries.com  
609.714.2330 x 113



## MODEL # CASCADE H 72

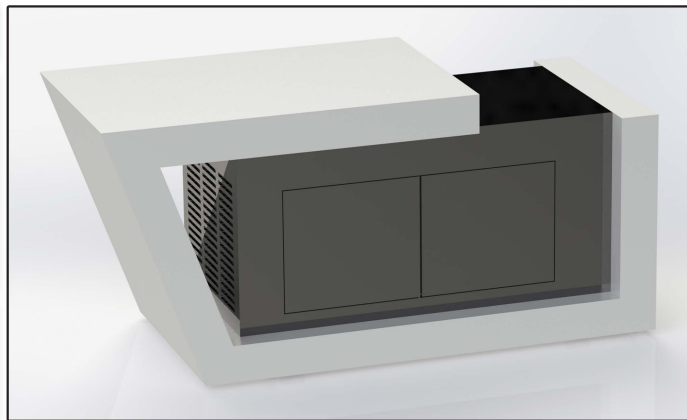
### SPECIFICATIONS

Hi stone top with water fall ends and 5" apron edge, laminate plate / utensil sill, raised single induction area with induc mate, remote control panel with off/on, display and 20 power levels, closed millwork base, Formica or Wilson Art standard laminate matte finish exterior, 115V/60/1, 6 amps, 8' cord, NEMA 5-15P.

Available lengths: ☐ 72"

Available depths: ☐ 30"

Available heights: ☐ 34"



### STANDARD FEATURES

- Hi stone top, apron & waterfall ends
- Hi stone (available in 6 colors)
- Standard plastic laminate matte finish exterior
- Laminate plate/utensil sill
- Raised induction area
- (1) induction unit with induc mate centered
- Concealed control with 20 power levels with display
- Hinged access panels to controls & electric
- Satin chrome knob-pulls
- Adjustable levelers
- 115v / 60 / 1, 6amps, 15 amp dedicated circuit required
- 8' cord and NEMA 5-15P plug

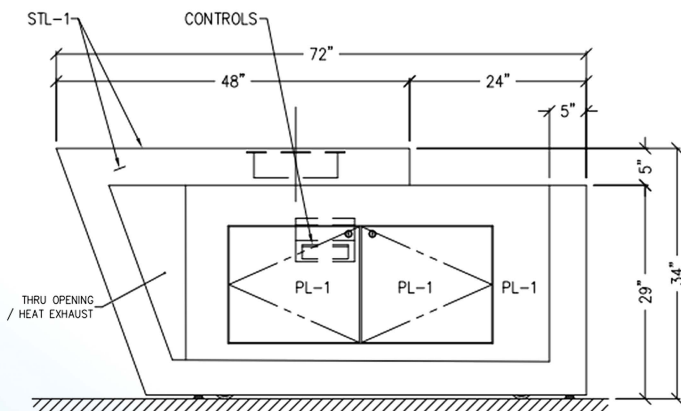
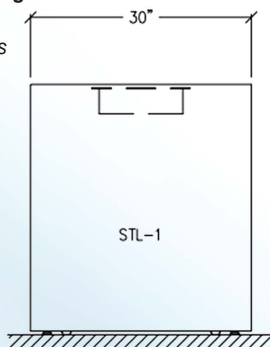
### OPTIONAL FEATURES

- ☐ 3" Casters
- ☐ Lock per door
- ☐ Premium laminate  
*(Must specify brand name, number and color, contact factory for price.)*

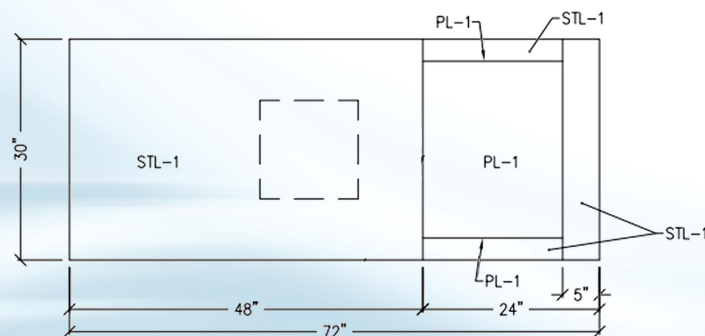
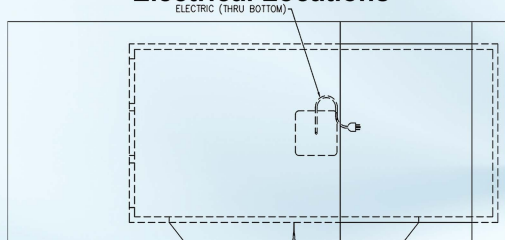
Some options may change electrical requirements.

**Note: Units designed for warming not cooking.**

*Note: Induction pans should have lids or covers to maintain proper food temperature.*



### Electrical Locations



**NSF-2**

RPI in line with its policy to continually improve its products reserves the right to change materials and specifications without notice.

CALL TOLL FREE: 800-525-3692 (609-714-2330)

FAX: 609-714-2331 [www.rpiindustries.com](http://www.rpiindustries.com)

220 ROUTE 70, MEDFORD, NJ 08055



**RPI INDUSTRIES, INC.** v3\_15\_23

## MODEL # CASCADE H 96

### SPECIFICATIONS

Hi stone top with water fall ends and 5" apron edge, laminate plate / utensil sill, raised single induction area with induc mate, remote control panel with off/on, display and 20 power levels, closed millwork base, Formica or Wilson Art standard laminate matte finish exterior, 115V/60/1, 12 amps, dedicated 15 amp circuit required, 8' cord, NEMA 5-15P.

Available lengths: ☐ 96"

Available depths: ☐ 30"

Available heights: ☐ 34"



### STANDARD FEATURES

- Hi stone top, apron & waterfall ends
- Hi stone (available in 6 colors)
- Standard plastic laminate matte finish exterior
- Laminate plate/utensil sill
- Raised induction area
- (1) induction unit with induc mate
- Concealed control with 20 power levels with display
- Hinged access panels to controls & electric
- Adjustable levelers
- 115v / 60 / 1, 6amps, 15 amp dedicated circuit required
- 8' cord and NEMA 5-15P plug
- Satin chrome knob-pulls

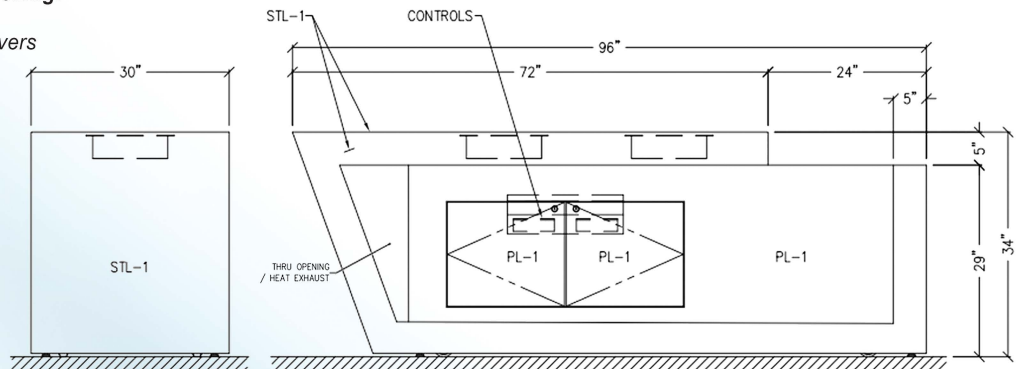
### OPTIONAL FEATURES

- ☐ Casters
- ☐ Add (1) induction unit 6 amps
- ☐ Lock per lock
- ☐ Premium laminate  
 (Must specify brand name, number and color, contact factory for price.)

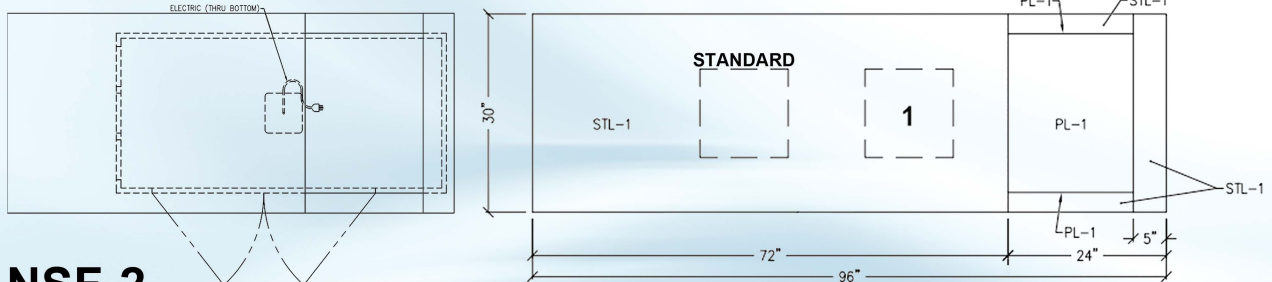
Some options may impact electrical requirements.

**Note: Units designed for warming not cooking.**

*Note: Induction pans should have lids or covers to maintain proper food temperature.*



### Electrical Locations



RPI in line with its policy to continually improve its products reserves the right to change materials and specifications without notice.

CALL TOLL FREE: 800-525-3692 (609-714-2330)

FAX: 609-714-2331 [www.rpiindustries.com](http://www.rpiindustries.com)

220 ROUTE 70, MEDFORD, NJ 08055

# GATHER TABLES

**PROJECT:** \_\_\_\_\_  
**ITEM:** \_\_\_\_\_ **QUANTITY:** \_\_\_\_\_

## MODEL # CASCADE IC 72

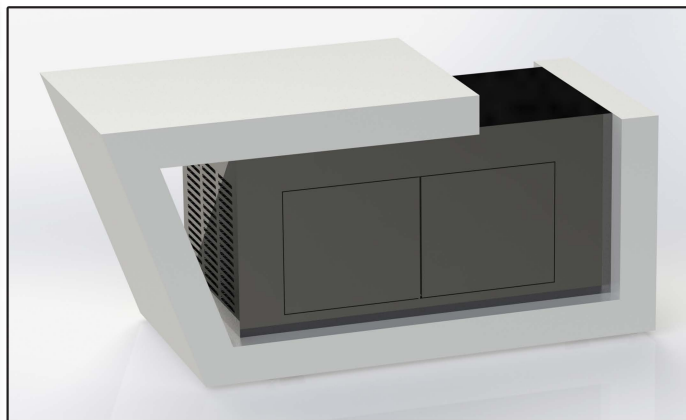
### SPECIFICATIONS

HI stone top with water fall ends and 5" apron edge, laminate plate / utensil sill, raised 24" Ice Rock area, closed millwork base, Formica or Wilson Art standard laminate matte finish exterior, self-contained refrigeration, 8' cord, NEMA 5-15P.

Available lengths: ☐ 72"

Available depths: ☐ 30"

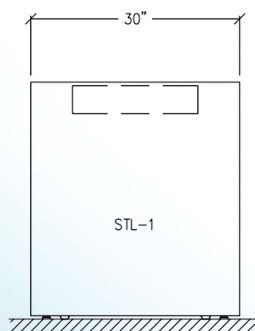
Available heights: ☐ 34"



### STANDARD FEATURES

- Self-Contained Refrigeration
- HI Stone top, apron and water fall ends
- HI Stone (available in 6 colors)
- Standard plastic laminate matte finish exterior
- Laminated plate / utensil sill
- Raised ICE Rock area with 24" x 18" Ice Rock
- Hinged access panels to condensing unit
- Satin chrome knob-pulls
- 8' cord and NEMA 5-15P plug
- Adjustable levelers
- 115v / 60 / 1 5.9 amps 15 amp dedicated circuit required
- 5 yr compressor warranty

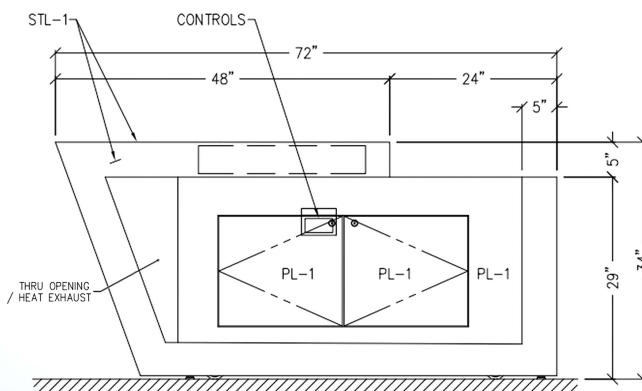
Note: When ice rock is turned off water will accumulate on top surface.



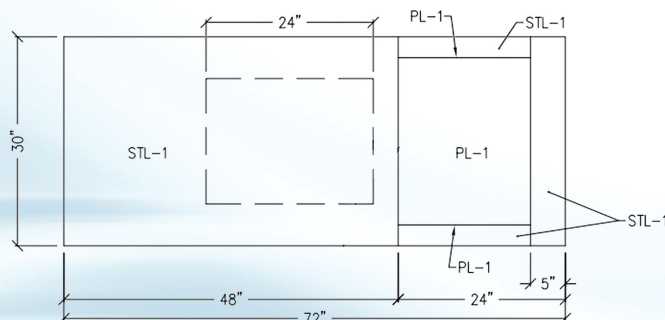
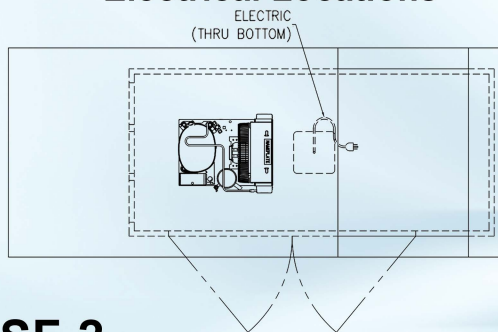
### OPTIONAL FEATURES

- ☐ 3" Casters
- ☐ Lock per door
- ☐ Premium Laminate  
 (Must specify brand name, number and color, contact factory for price.)

Some options may change electrical requirements.



### Electrical Locations



RPI in line with its policy to continually improve its products reserves the right to change materials and specifications without notice.

CALL TOLL FREE: 800-525-3692 (609-714-2330)

FAX: 609-714-2331 [www.rpiindustries.com](http://www.rpiindustries.com)

220 ROUTE 70, MEDFORD, NJ 08055

**RPI INDUSTRIES, INC.** v3\_15\_23



## MODEL # CASCADE IC 96

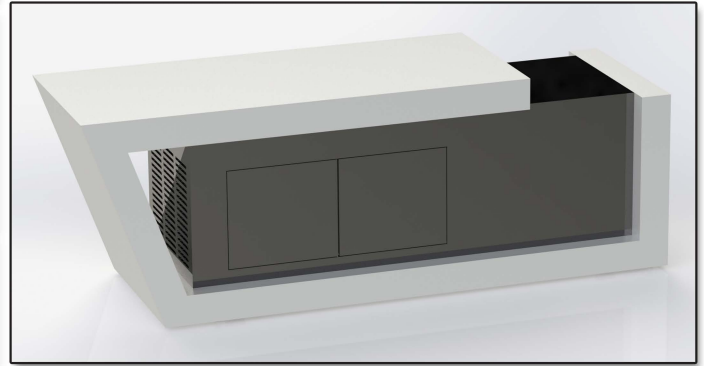
### SPECIFICATIONS

HI stone top with water fall ends and 5" apron edge, laminate plate / utensil sill, raised 24" Ice Rock area, closed millwork base, Formica or Wilson Art standard laminate matte finish exterior, self-contained refrigeration, 8' cord, NEMA 5-15P.

Available lengths: ☐ 96"

Available depths: ☐ 30"

Available heights: ☐ 34"



### STANDARD FEATURES

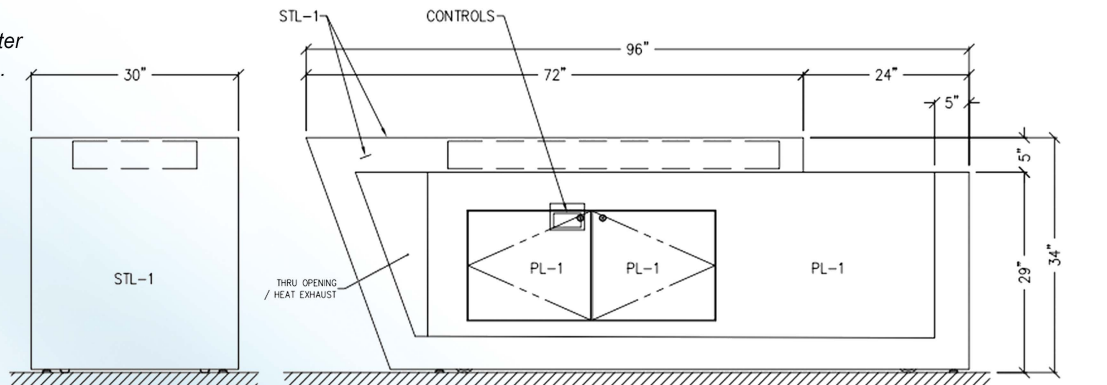
- Self-Contained Refrigeration
- HI Stone top, apron and water fall ends
- HI Stone (available in 6 colors)
- Standard plastic laminate matte finish exterior
- Laminated plate / utensil sill
- Raised ICE Rock area with 24" x 18" Ice Rock
- Hinged access panels to condensing unit
- Satin chrome knob-pulls
- 8' cord and NEMA 5-15P plug
- Adjustable levelers
- 115v / 60 / 1 5.9 amps 15amp dedicated circuit required
- 5 yr compressor warranty

Note: When ice rock is turned off water will accumulate on top surface.

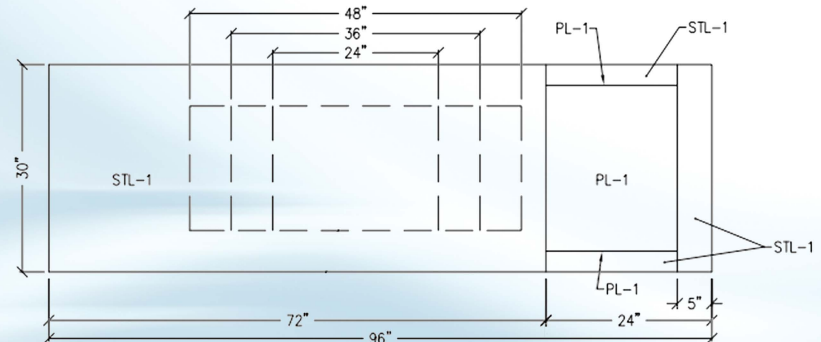
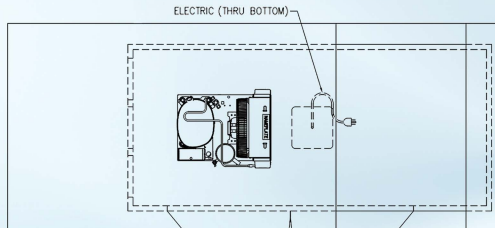
### OPTIONAL FEATURES

- ☐ 36" x 18" Ice Rock in lieu of 24" 5.9 amps
  - ☐ 48" x 18" Ice Rock in lieu of 24" 7.6 amps
  - ☐ 3" Casters
  - ☐ Lock per door
  - ☐ Premium laminate
- (Must specify brand name, number and color, contact factory for price.)

Some options may impact electrical requirements.



### Electrical Locations



RPI in line with its policy to continually improve its products reserves the right to change materials and specifications without notice.

CALL TOLL FREE: 800-525-3692 (609-714-2330)

FAX: 609-714-2331 [www.rpiindustries.com](http://www.rpiindustries.com)

220 ROUTE 70, MEDFORD, NJ 08055