



## About the Product

Dining does not need to be boring; our Leisure piece will bring out the fun in you. Cater to team members, meet staff and entertain possible clients with this product. Perfect for corporate dining and meeting rooms, colleges, and restaurants.

*Unit is designed for warming, not cooking.*

### Features

- 6 top colors
- Open ambient beverage display
- Double beverage display on larger unit
- Faux drawer panels
- Storage on right end with adjustable shelf
- Concealed controls
- 2 sizes available
- Decorative wood legs
- Optional applied wood trim
- Unit back can go against wall

### Model

HI stone top with a laminated edge, area for plates/utensils, centered single induction area with induc mate, closed millwork bases, hinged access panels with concealed off/on, display with 20 power levels, Open ambient beverage storage section, Formica or Wilson Art standard laminate exterior, 115V/60/1, 6 amps, 15 amp dedicated circuit required 8' cord with NEMA 5-15P.



### Contact Us

Gary Hamilton  
gdhamilton@rpiindustries.com  
609.714.2330 x 113



## Options - 72"

### Base\*

72" W x 30" W x 34"H

- Option: Add 1 induction unit

\*Shown with optional applied decorative wood trim

### Deluxe\*

Unit back can be against a wall, front air intake rear air discharge, HI stone top with a laminated edge, area for plates/utensils, 24" centered Ice Rock area, closed millwork bases, hinged access panels with off/on switch, Ambient open beverage storage, Formica or Wilson Art standard laminate exterior, self-contained refrigeration, 8' cord, NEMA 5-15P.

72" W x 30" W x 34"H

- Option: 36" Ice Rock
- Option: 48" Ice Rock

Compressor Warranty \$

\*Shown with optional applied decorative wood trim

*Please note when Ice Rock defrosts, water will accumulate on top surface.*

**HI Stone available in 6 colors.**

## Options - 96"

### Base\*

96" W x 30" W x 34"H

- Option: Add 1 induction unit
- Option: Add 2 induction units  
(Additional 15 amp circuit required)
- Option: Add 3 induction units  
(Additional 15 amp circuit required)

\*Shown with optional applied decorative wood trim

### Deluxe\*

Unit back can be against a wall, front air intake rear air discharge, HI stone top with a laminated edge, area for plates/utensils, 24" centered Ice Rock area, closed millwork bases, hinged access panels with off/on switch, Formica or Wilson Art standard laminate exterior, self-contained refrigeration, 8' cord, NEMA 5-15P.

96" W x 30" W x 34"H

- Option: 36" Ice Rock
- Option: 48" Ice Rock
- Option: 60" Ice Rock

\*Shown with optional applied decorative wood trim

*Please note when Ice Rock defrosts, water will accumulate on top surface.*



# GATHER TABLES

**PROJECT:** \_\_\_\_\_  
**ITEM:** \_\_\_\_\_ **QUANTITY:** \_\_\_\_\_

## MODEL # LEISURE H 72

### SPECIFICATIONS

Hi stone top with an eased edge, area for plate's / utensil's, centered single induction area with induc mate, closed millwork bases, hinged access panels with concealed off/on, display with 20 power levels, Open ambient beverage storage section, Formica or Wilson Art standard laminate matte finish exterior, 115V/60/1, 6 amps, 15 amp dedicated circuit required 8' cord with NEMA 5-15P.

Available lengths: ☐ 72"

Available depths: ☐ 30"

Available heights: ☐ 34"



### STANDARD FEATURES

- Hi stone top (available in 6 colors)
- Closed millwork base
- Hinged access door to controls and electric
- Hinged door with storage
- Satin chrome knob-pulls
- Adjustable shelf
- Faux drawer fronts
- Concealed controls
- Open ambient beverage display/storage
- Decorative wood legs
- Back can go against wall
- Single centered induction unit with induc mate
- Concealed control panel with 20 power levels with display
- Front air intake, rear exhaust
- Black laminate interior
- Standard plastic laminate matte finish exterior
- 115v / 60 / 1, 6 amps, 15 amp dedicated circuit required
- 8' cord and NEMA 5-15P plug

**Note: Units designed for warming not cooking.**

*Note: Units designed for induction pans with lids or covers*

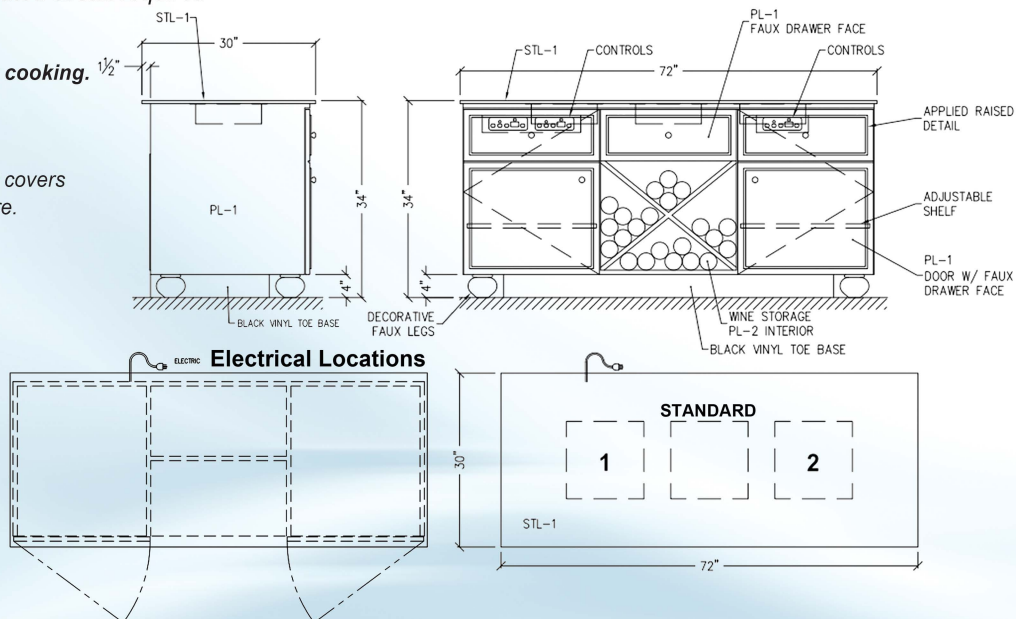
*Note: Induction pans should have lids or covers to maintain proper food temperature.*

### OPTIONAL FEATURES

- ☐ Applied decorative wood trim
- ☐ Add (1) induction unit 6 amps
- ☐ Add (2) induction units 6 amps each (additional 15 amp circuit required)
- ☐ Lock per door
- ☐ Premium Laminate  
*(Must specify brand name, number and color, contact factory for price.)*

*Note: Contact factory if 6-20 outlet is available when ordering additional induction units.*

*Some options may change electrical requirements.*



RPI in line with its policy to continually improve its products reserves the right to change materials and specifications without notice.

CALL TOLL FREE: 800-525-3692 (609-714-2330)

FAX: 609-714-2331 [www.rpiindustries.com](http://www.rpiindustries.com)

220 ROUTE 70, MEDFORD, NJ 08055



**RPI INDUSTRIES, INC.** v3\_15\_23

# GATHER TABLES

**PROJECT:** \_\_\_\_\_  
**ITEM:** \_\_\_\_\_ **QUANTITY:** \_\_\_\_\_

## MODEL # LEISURE H 96

### SPECIFICATIONS

Hi stone top with an eased edge, area for plate's / utensil's, single induction area with induc mate, closed millwork bases, hinged access panels with concealed off/on, display with 20 power levels, Open ambient beverage storage section, Formica or Wilson Art standard laminate matte finish exterior, 115V/60/1, 6 amps, 15 amp dedicated circuit required, 8' cord with NEMA 5-15P.

Available lengths: ☐ 96"

Available depths: ☐ 30"

Available heights: ☐ 34"



### STANDARD FEATURES

- Hi stone top (available in 6 colors)
- Closed millwork base
- Hinged access door to controls and electric
- Hinged door with storage
- Satin chrome knob-pulls
- Adjustable shelf
- Faux drawer fronts
- Concealed controls
- Open ambient beverage display/storage
- Decorative wood legs
- Back can go against wall
- Single induction unit with induc mate
- Concealed control panel with 20 power level display
- Front air intake, rear exhaust
- Black laminate interior
- Standard plastic laminate matte finish exterior
- 115v / 60 / 1, 6 amps, 15 amps Dedicated circuit required
- 8' cord and NEMA 5-15P plug

**Note: Units designed for warming not cooking.**

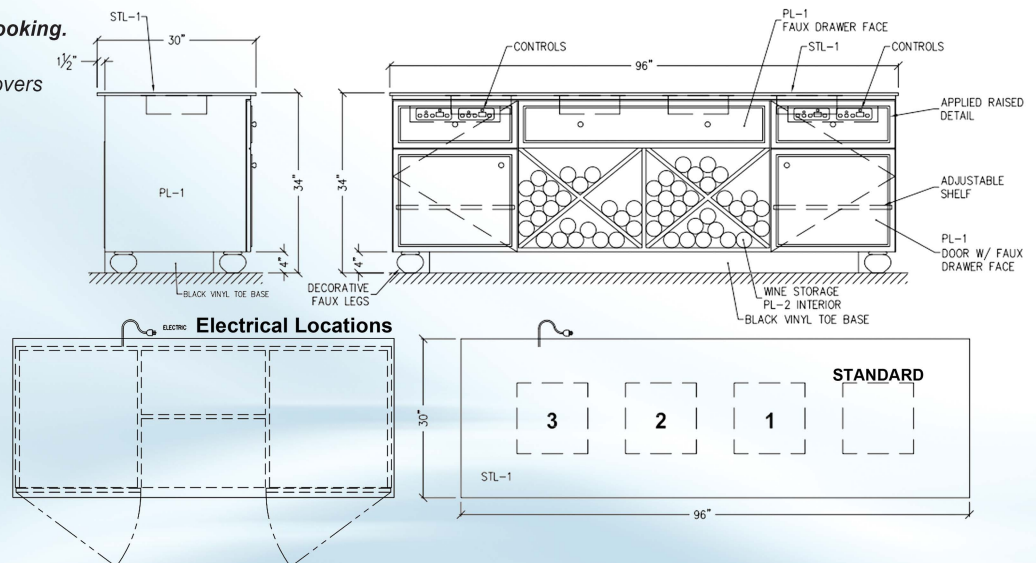
*Note: Induction pans should have lids or covers to maintain proper food temperature.*

### OPTIONAL FEATURES

- ☐ Add (1) induction unit 6 amps
- ☐ Add (2) induction units 6 amps each (additional 15 amp circuit required)
- ☐ Add (3) induction units 6 amps each (additional 15 amp circuit required)
- ☐ Applied decorative wood trim
- ☐ Lock per door
- ☐ Premium laminate  
*(Must specify brand name, number and color, contact factory for price.)*

*Note: Contact factory if 6-20 outlet is available when ordering additional induction units.*

*Some options may change electrical requirements.*



RPI in line with its policy to continually improve its products reserves the right to change materials and specifications without notice.

CALL TOLL FREE: 800-525-3692 (609-714-2330)

FAX: 609-714-2331 [www.rpiindustries.com](http://www.rpiindustries.com)

220 ROUTE 70, MEDFORD, NJ 08055

**RPI INDUSTRIES, INC.** v3\_15\_23



# GATHER TABLES

**PROJECT:** \_\_\_\_\_  
**ITEM:** \_\_\_\_\_ **QUANTITY:** \_\_\_\_\_

## MODEL # LEISURE IC 72

### SPECIFICATIONS

Unit back can be against a wall, front air intake rear air discharge, HI stone top with an eased edge, area for plate's / utensil's, 24" centered Ice Rock area, closed millwork bases, hinged access panels with off/on switch, Open ambient beverage storage section, Formica or Wilson Art standard laminate matte finish exterior, self-contained refrigeration, 8' cord, NEMA 5-15P.

Available lengths: ☐ 72"

Available depths: ☐ 30"

Available heights: ☐ 34"



Shown with optional applied decorative wood trim

### STANDARD FEATURES

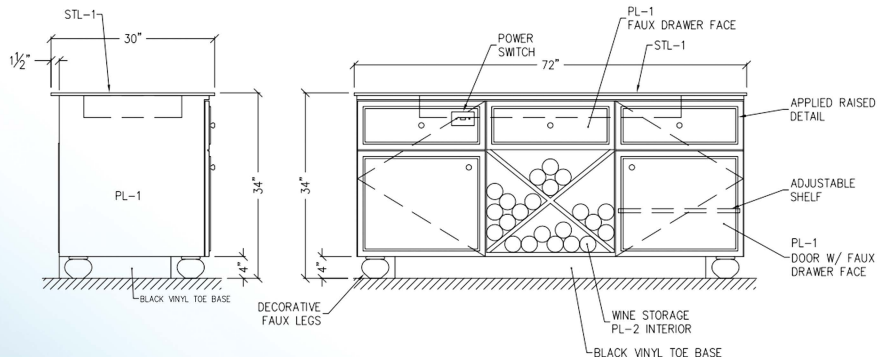
- Self-Contained Refrigeration
- Hi stone top (available in 6 colors)
- Closed millwork base
- Hinged access door to compressor and electric
- Hinged door with storage
- Satin chrome knob-pull
- Adjustable shelf
- Faux drawer fronts
- Concealed controls
- Open ambient beverage display/storage
- Decorative wood legs
- Back can go against wall
- 24" x 18" ice rock centered
- Front air intake, rear exhaust
- Black laminate interior
- Standard plastic laminate matte finish exterior
- 115v / 60 / 1, 5.9 amps, 15 amp
- Dedicated circuit required
- 8' cord and NEMA 5-15P plug
- 5 year compressor warranty

Note: When ice rock is turned off water will accumulate on top surface.

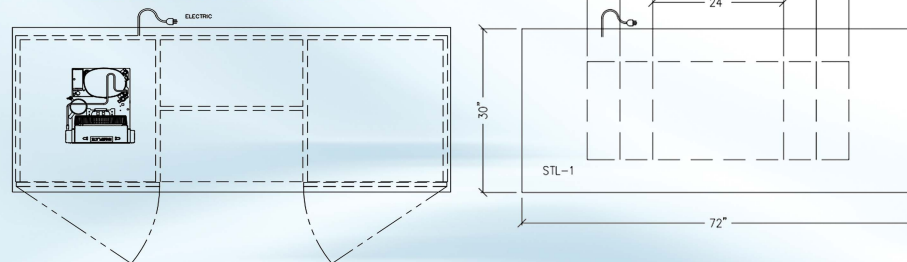
### OPTIONAL FEATURES

- ☐ 36" x 18" ice rock in lieu of 24" 5.9amps
  - ☐ 48" x 18" ice rock in lieu of 24" 7.6amps
  - ☐ Applied decorative wood trim
  - ☐ Lock per door
  - ☐ Premium Laminate
- (Must specify brand name, number and color, contact factory for price.)

Some options may change electrical requirements



### Electrical Locations



RPI in line with its policy to continually improve its products reserves the right to change materials and specifications without notice.

CALL TOLL FREE: 800-525-3692 (609-714-2330)

FAX: 609-714-2331 [www.rpiindustries.com](http://www.rpiindustries.com)

220 ROUTE 70, MEDFORD, NJ 08055

**RPI INDUSTRIES, INC.** v3\_15\_23

# GATHER TABLES

PROJECT: \_\_\_\_\_  
ITEM: \_\_\_\_\_ QUANTITY: \_\_\_\_\_

## MODEL # LEISURE IC 96

### SPECIFICATIONS

Unit back can be against a wall, front air intake rear air discharge, HI stone top with an eased edge, area for plate's / utensil's, 24" centered Ice Rock area, closed millwork bases, hinged access panels with off/on switch. Open ambient double beverage storage section with Formica or Wilson Art standard laminate matte finish exterior, self-contained refrigeration, 8' cord, NEMA 5-15P.

Available lengths: ☐ 96"

Available depths: ☐ 30"

Available heights: ☐ 34"



Shown with optional applied decorative wood trim

### STANDARD FEATURES

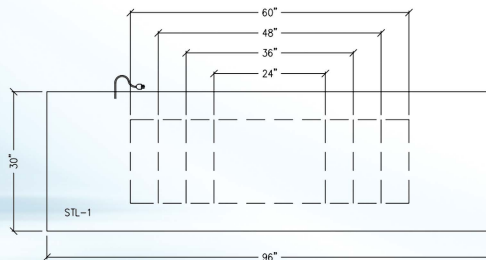
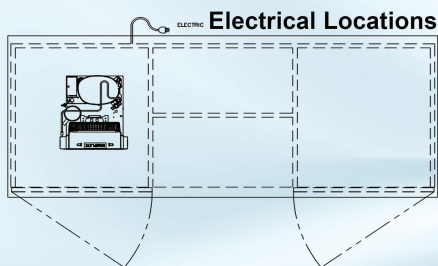
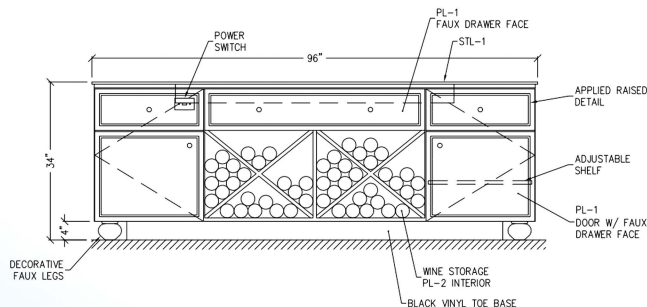
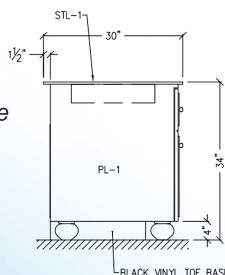
- Self-Contained Refrigeration
- Hi stone top (available in 6 colors)
- Closed millwork base
- Hinged access door to compressor and electric
- Hinged door with storage
- Satin chrome knob-pull
- Adjustable shelf
- Faux drawer fronts
- Concealed controls
- Decorative wood legs
- Back can go against wall
- 24" x 18" ice rock centered
- Front air intake, rear exhaust
- Black laminate interior
- Standard plastic laminate matte finish exterior
- 115v / 60 / 1, 5.9 amps, 15 amp
- Dedicated circuit required
- 8' cord and NEMA 5-15P plug
- Open double ambient beverage display / storage
- 5 year compressor warranty

Note: When ice rock is turned off water will accumulate on top surface.

### OPTIONAL FEATURES

- ☐ 36" x 18" ice rock in lieu of 24" 5.9amps
  - ☐ 48" x 18" ice rock in lieu of 24" 7.6amps
  - ☐ 60" ice rock in lieu of 24" 7.6amps
  - ☐ Applied decorative wood trim
  - ☐ Lock per door
  - ☐ Premium laminate
- (Must specify brand name, number and color, contact factory for price.)

Some options may change electrical requirements.



RPI in line with its policy to continually improve its products reserves the right to change materials and specifications without notice.

CALL TOLL FREE: 800-525-3692 (609-714-2330)

FAX: 609-714-2331 [www.rpiindustries.com](http://www.rpiindustries.com)

220 ROUTE 70, MEDFORD, NJ 08055



INDUSTRIES, INC. v3\_15\_23