

GATHER TABLES

PROJECT: _____

ITEM: _____ QUANTITY: _____

MODEL # LEISURE H 96

SPECIFICATIONS

Hi stone top with an eased edge, area for plate's / utensil's, single induction area with closed millwork bases, hinged access panels with concealed off/on, display with 20 power levels, Open ambient beverage storage section, Formica or Wilson Art standard laminate matte finish exterior, 115V/60/1, 6 amps, 15 amp dedicated circuit required, 8' cord with NEMA 5-15P.

Available lengths: 96"

Available depths: 30"

Available heights: 34"



STANDARD FEATURES

- Hi stone top (available in 6 colors)
- Closed millwork base
- Hinged access door to controls and electric
- Hinged door with storage
- Satin chrome knob-pulls
- Adjustable shelf
- Faux drawer fronts
- Concealed controls
- Open ambient beverage display/storage
- Decorative wood legs
- Back can go against wall
- (1) induction unit included
- Concealed control panel with 20 power level display
- Front air intake, rear exhaust
- Black laminate interior
- Standard plastic laminate matte finish exterior
- 115v / 60 / 1, 6 amps, 15 amps Dedicated circuit required
- 8' cord and NEMA 5-15P plug

OPTIONAL FEATURES

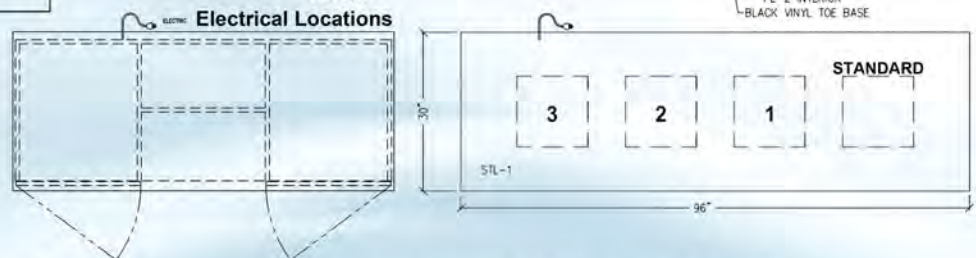
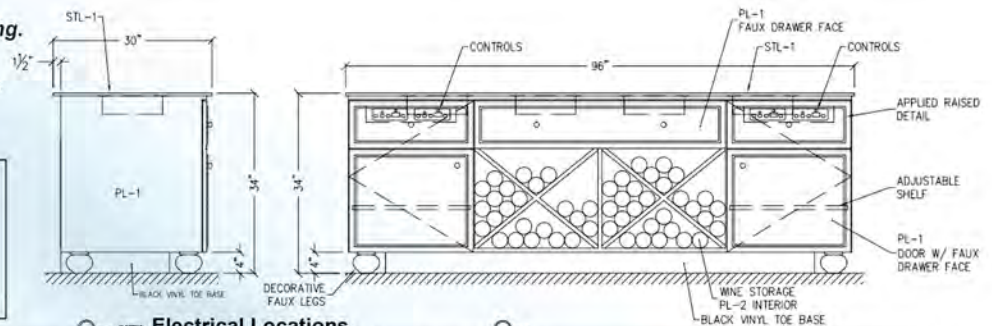
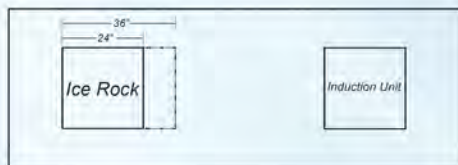
- Add (1) induction unit 6 amps
 - Add (2) induction units 6 amps each (additional 15 amp circuit required)
 - Add (3) induction units 6 amps each (additional 15 amp circuit required)
 - Combo 1 24" x 18" ice rock with (1) induction, 115v/60/1, 11.9 amps
 - Combo 2 36" x 18" ice rock with (1) induction, 115v/60/1, 11.9 amps
 - Applied decorative wood trim
 - Lock per door
 - Premium laminate
- (Must specify brand name, number and color, contact factory for price.)

Note: Contact factory if 6-20 outlet is available when ordering additional induction units.

Some options may change electrical requirements.

Note: Units designed for warming not cooking.

Note: Induction pans should have lids or covers to maintain proper food temperature.



RPI in line with its policy to continually improve its products reserves the right to change materials and specifications without notice.

CALL TOLL FREE: 800-525-3692 (609-714-2330)

FAX: 609-714-2331 www.rpiindustries.com

220 ROUTE 70, MEDFORD, NJ 08055

