

SPECIFICATIONS

Smartflex touchless technology is a patented revolutionary system of front vertical glass panels that activates by motion sensors which can automatically open and close on demand. Intelligence of the system can detect when a person is in front of unit which allows the doors to operate. Smartflex combines the advantages of quick & easy accessibility of doorless display units with the benefit of energy savings; up to 40% less energy consumption vs. open display cases. Automatic doors are silent and as you approach the unit, Smartflex opens quickly and efficiently without any loss of time. Available in a variety of sizes and configurations.

Available lengths: ☐ 39.1" ☐ 51.2" ☐ 76.2"

Available depths: ☐ 33.5"

Available heights: ☐ 80.7"



STANDARD FEATURES

- Black powder coat interior and exterior
- Electronic controller with display
- High Efficiency top LED canopy lighting
- Glass end panels
- 5 shelves
- 4 adjustable feet
- Adjustable sensor & timer
- Advanced monitoring system
- Equipped with safety mechanism to prevent door closure
- Condensate evaporation Included
- R290 refrigeration system

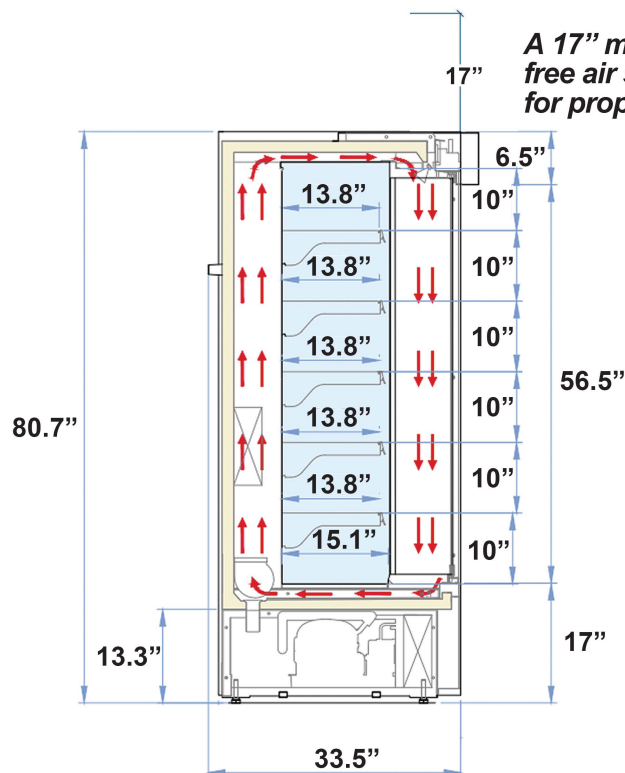
OPTIONAL ACCESSORIES

- ☐ Interior / exterior / side panels available in stainless steel in lieu of powder coat
- ☐ Additional powder coat colors available (contact factory)
- ☐ Solid side panels in lieu of glass
 - Black powder coat
 - Additional colors available (contact factory)
- ☐ Under-shelf LED lighting
- ☐ Remote version available
- ☐ Casters

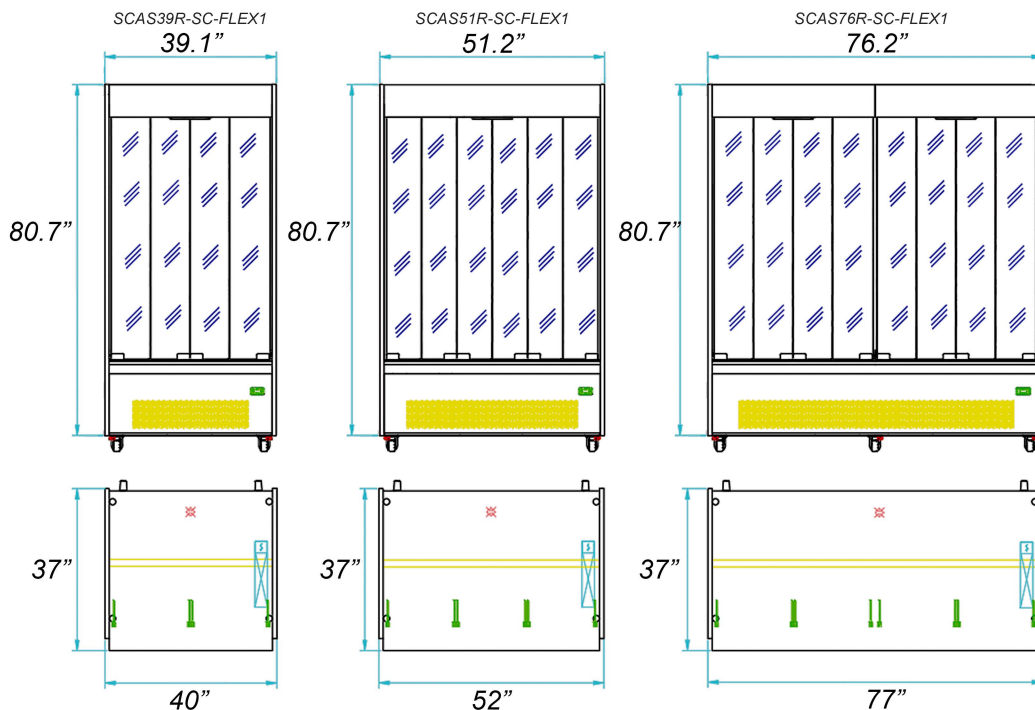
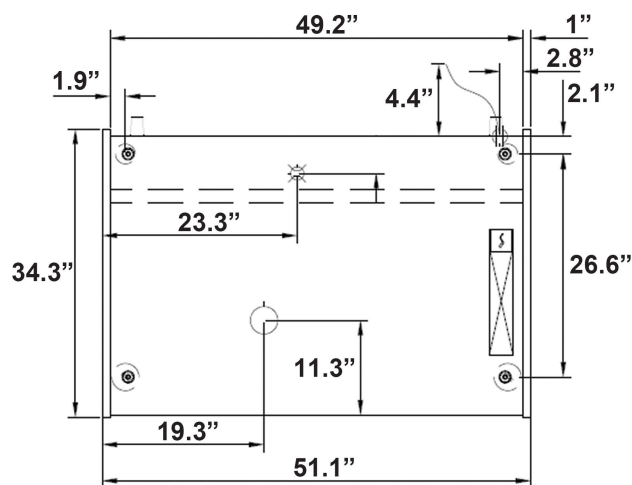
MODEL	L	D	H	VOLT	AMPS	WT	Refrig.
SCAS39R-SC-FLEX1	39.1"	33.5"	80.7"	230V	8	629	R290
SCAS51R-SC-FLEX1	51.2"	33.5"	80.7"	230V	8	761	R290
SCAS76R-SC-FLEX1	76.2"	33.5"	80.7"	230V	16	1070	R290



Conforms to UL Standard 471,
and NSF Standard 7; Certified
To CSA Standard C22.2 No.120



A 17" minimum of unobstructed free air space needed above unit for proper ventilation



RPI in line with it's policy to continually improve it's product reserves the right to change materials and specifications without notice.